



continuous light element, clear, 12-230 V AC/DC, 50 mm diameter, base BA15d without light element

|   |                          |
|---|--------------------------|
| product brand name                          | SIRIUS                   |
| product designation                         | Continuous light element |
| design of the product                       | without light source     |
| <b>General technical data</b>               |                          |
| type of voltage of the operating voltage    | AC/DC                    |
| operating voltage                           |                          |
| • at DC rated value                         | 12 ... 230 V             |
| • at AC at 50 Hz rated value                | 12 ... 230 V             |
| • at AC at 60 Hz rated value                | 12 ... 230 V             |
| reference code according to EN 61346-2      | P                        |
| <b>Lamp</b>                                 |                          |
| product component light source              | No                       |
| type of light source                        | filament lamp / LED      |
| design of the optical signal                | continuous light         |
| socket design                               | BA 15d                   |
| <b>Enclosure</b>                            |                          |
| height                                      | 67 mm                    |
| width                                       | 52 mm                    |
| outer diameter of the signal column element | 50 mm                    |
| material                                    | PC                       |
| color                                       | clear                    |
| fastening method                            | Bayonet                  |
| protection class IP                         | IP54                     |
| <b>Ambient conditions</b>                   |                          |
| ambient temperature during operation        | -20 ... +60 °C           |
| <b>Approvals Certificates</b>               |                          |
| General Product Approval                    | other                    |



[Confirmation](#)



[Confirmation](#)

other

Environment

[Confirmation](#)



[Environmental Con-  
firmations](#)



## Further information

### Information on the packaging

<https://support.industry.siemens.com/cs/ww/en/view/109813875>

### Information for data generation and storage

<https://support.industry.siemens.com/cs/ww/en/view/109995012>

### Information- and Downloadcenter (Catalogs, Brochures,...)

<https://www.siemens.com/ic10>

### Industry Mall (Online ordering system)

<https://mall.industry.siemens.com/mall/en/en/Catalog/product?mlfb=8WD4200-1AE>

### Cax online generator

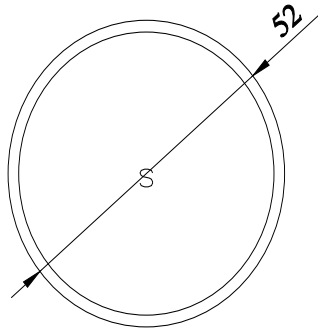
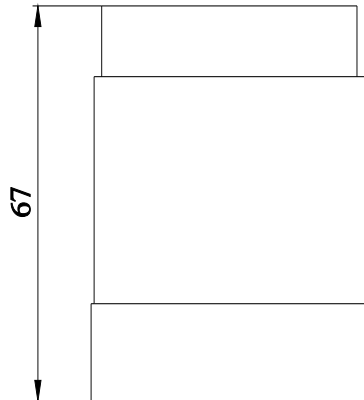
<https://support.automation.siemens.com/WW/CAXorder/default.aspx?lang=en&mlfb=8WD4200-1AE>

### Service&Support (Manuals, Certificates, Characteristics, FAQs,...)

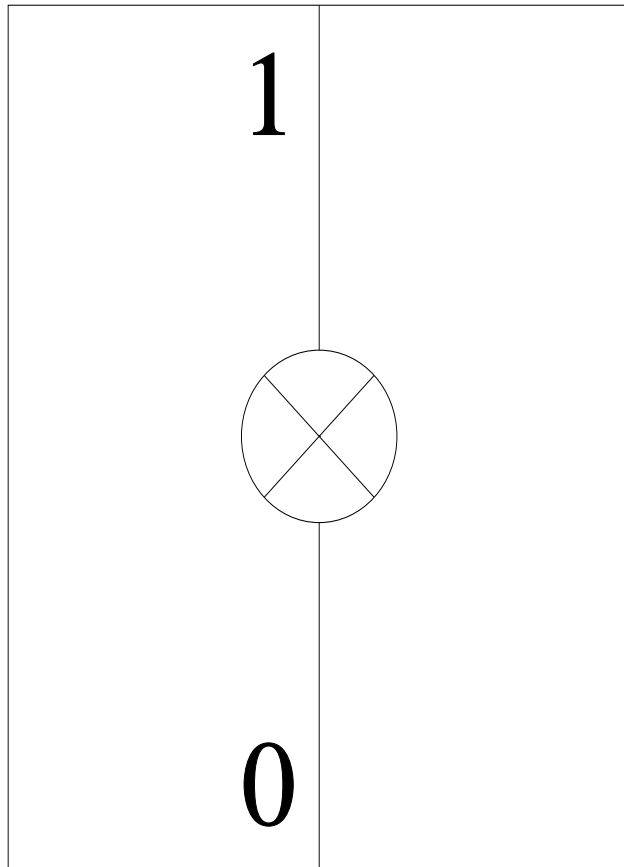
<https://support.industry.siemens.com/cs/ww/en/ps/8WD4200-1AE>

### Image database (product images, 2D dimension drawings, 3D models, device circuit diagrams, EPLAN macros, ...)

[https://www.automation.siemens.com/bilddb/cax\\_de.aspx?mlfb=8WD4200-1AE&lang=en](https://www.automation.siemens.com/bilddb/cax_de.aspx?mlfb=8WD4200-1AE&lang=en)



**-P**



last modified:

2/12/2026 