



continuous light element, yellow, 12-230 V AC/DC, 50 mm diameter, base BA15d without light element

product brand name	SIRIUS
product designation	Continuous light element
design of the product	without light source
<b>General technical data</b>	
type of voltage of the operating voltage	AC/DC
operating voltage	
• at DC rated value	12 ... 230 V
• at AC at 50 Hz rated value	12 ... 230 V
• at AC at 60 Hz rated value	12 ... 230 V
reference code according to EN 61346-2	P
<b>Lamp</b>	
product component light source	No
type of light source	filament lamp / LED
design of the optical signal	continuous light
socket design	BA 15d
<b>Enclosure</b>	
height	67 mm
width	52 mm
outer diameter of the signal column element	50 mm
material	PC
color	yellow
fastening method	Bayonet
protection class IP	IP54
<b>Ambient conditions</b>	
ambient temperature during operation	-20 ... +60 °C
<b>Approvals Certificates</b>	
General Product Approval	other



[Confirmation](#)



[Confirmation](#)

other

Environment

[Confirmation](#)



[Environmental Con-  
firmations](#)



## Further information

### Information on the packaging

<https://support.industry.siemens.com/cs/ww/en/view/109813875>

### Information for data generation and storage

<https://support.industry.siemens.com/cs/ww/en/view/109995012>

### Information- and Downloadcenter (Catalogs, Brochures,...)

<https://www.siemens.com/ic10>

### Industry Mall (Online ordering system)

<https://mall.industry.siemens.com/mall/en/en/Catalog/product?mlfb=8WD4200-1AD>

### Cax online generator

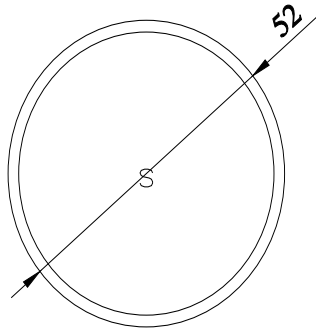
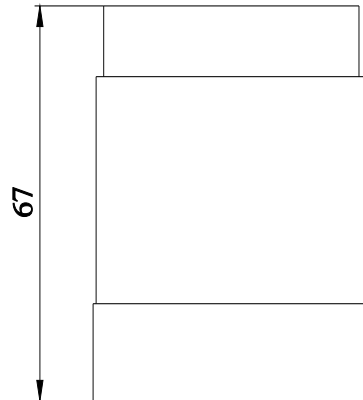
<https://support.automation.siemens.com/WW/CAXorder/default.aspx?lang=en&mlfb=8WD4200-1AD>

### Service&Support (Manuals, Certificates, Characteristics, FAQs,...)

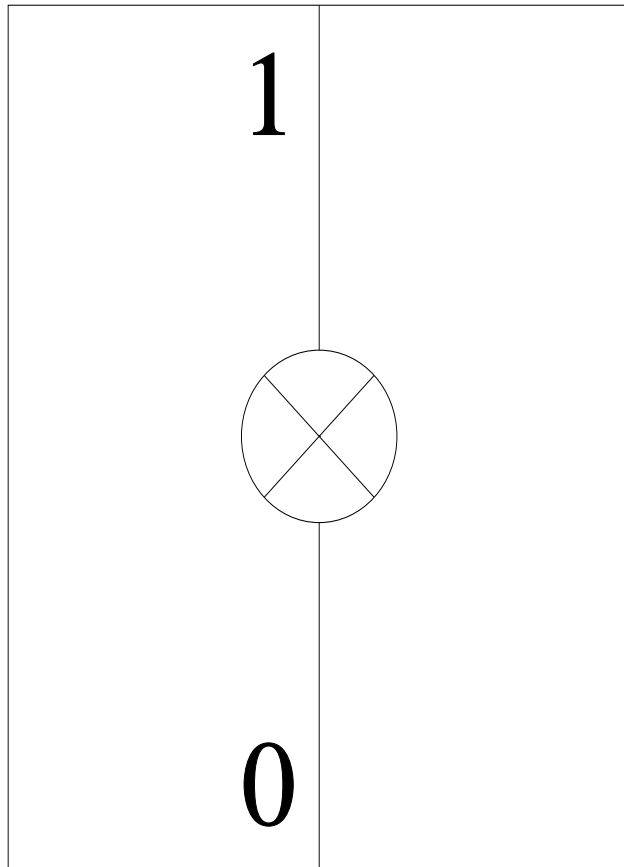
<https://support.industry.siemens.com/cs/ww/en/ps/8WD4200-1AD>

### Image database (product images, 2D dimension drawings, 3D models, device circuit diagrams, EPLAN macros, ...)

[https://www.automation.siemens.com/bilddb/cax\\_de.aspx?mlfb=8WD4200-1AD&lang=en](https://www.automation.siemens.com/bilddb/cax_de.aspx?mlfb=8WD4200-1AD&lang=en)



**-P**



last modified:

2/12/2026 