



continuous light element, red, 12-230 V AC/DC, 50 mm diameter, base BA15d without light element

product brand name	SIRIUS
product designation	Continuous light element
design of the product	without light source
General technical data	
type of voltage of the operating voltage	AC/DC
operating voltage	
• at DC rated value	12 ... 230 V
• at AC at 50 Hz rated value	12 ... 230 V
• at AC at 60 Hz rated value	12 ... 230 V
reference code according to EN 61346-2	P
Lamp	
product component light source	No
type of light source	filament lamp / LED
design of the optical signal	continuous light
socket design	BA 15d
Enclosure	
height	67 mm
width	52 mm
outer diameter of the signal column element	50 mm
material	PC
color	red
fastening method	Bayonet
protection class IP	IP54
Ambient conditions	
ambient temperature during operation	-20 ... +60 °C
Approvals Certificates	
General Product Approval	other



[Confirmation](#)



[Confirmation](#)

other

Environment

[Confirmation](#)



[Environmental Con-
firmations](#)



Further information

Information on the packaging

<https://support.industry.siemens.com/cs/ww/en/view/109813875>

Information for data generation and storage

<https://support.industry.siemens.com/cs/ww/en/view/109995012>

Information- and Downloadcenter (Catalogs, Brochures,...)

<https://www.siemens.com/ic10>

Industry Mall (Online ordering system)

<https://mall.industry.siemens.com/mall/en/en/Catalog/product?mlfb=8WD4200-1AB>

Cax online generator

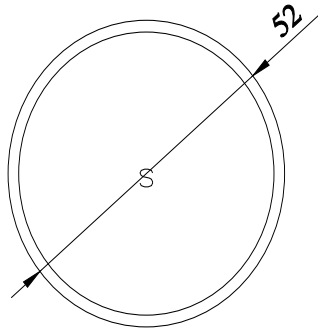
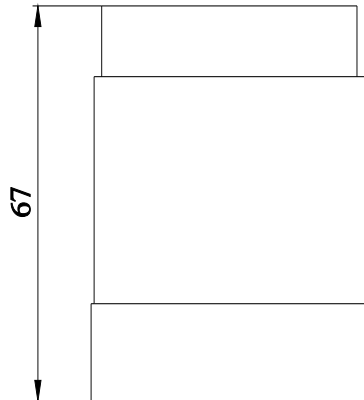
<https://support.automation.siemens.com/WW/CAXorder/default.aspx?lang=en&mlfb=8WD4200-1AB>

Service&Support (Manuals, Certificates, Characteristics, FAQs,...)

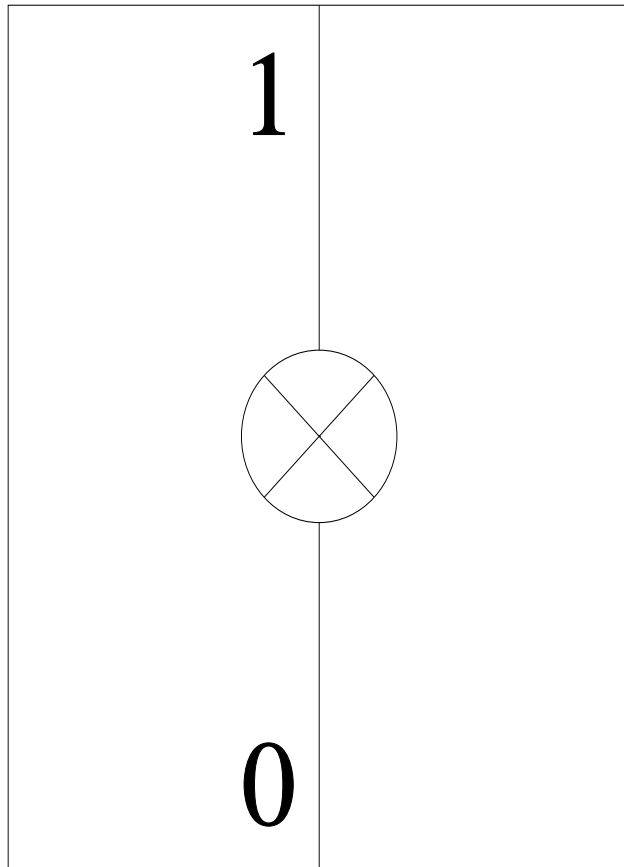
<https://support.industry.siemens.com/cs/ww/en/ps/8WD4200-1AB>

Image database (product images, 2D dimension drawings, 3D models, device circuit diagrams, EPLAN macros, ...)

https://www.automation.siemens.com/bilddb/cax_de.aspx?mlfb=8WD4200-1AB&lang=en



-P



last modified:

4/1/2025 