

busbar adapter Size S3 for mechanical mounting of circuit breaker and contactor  
Can be snapped onto standard mounting rail or for screw mounting (multi-unit packaging)

product brand name	SIRIUS
product category	DIN-rail adapter
product designation	DIN rail adapter
product type designation	3RA29

General technical data	
material	plastic
certificate of suitability	CE / UL / CSA
size of the circuit-breaker	S3
size of contactor	S3
Substance Prohibition (day/month/year)	07/01/2006
Net Weight	0.258 kg

Installation/ mounting/ dimensions	
fastening method	screw and snap-on mounting onto 35 mm DIN rail
height	332.5 mm
width	70 mm
depth	23.3 mm

Approvals Certificates			
Environment	General Product Approval	Test Certificates	Maritime application

[Environmental Confirmations](#)



[Special Test Certificate](#)



### Maritime application



### other

[Confirmation](#)

[Confirmation](#)



### Railway

[Special Test Certificate](#)

### Further information

Information on the packaging

<https://support.industry.siemens.com/cs/ww/en/view/109813875>

Information for data generation and storage

<https://support.industry.siemens.com/cs/ww/en/view/109995012>

Information- and Downloadcenter (Catalogs, Brochures,...)

<https://www.siemens.com/ic10>

Industry Mall (Online ordering system)

<https://mall.industry.siemens.com/mall/en/en/Catalog/product?mlfb=3RA2942-1A>

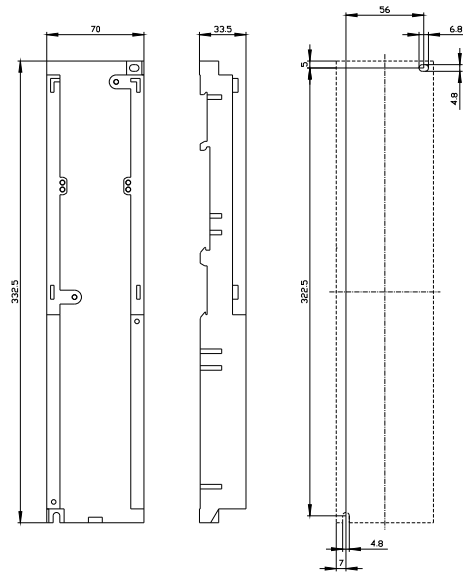
Cax online generator

<https://support.automation.siemens.com/WW/CAXorder/default.aspx?lang=en&mlfb=3RA2942-1A>

Service&Support (Manuals, Certificates, Characteristics, FAQs,...)

<https://support.industry.siemens.com/cs/ww/en/ps/3RA2942-1A>

Image database (product images, 2D dimension drawings, 3D models, device circuit diagrams, EPLAN macros, ...)



last modified:

10/22/2025 