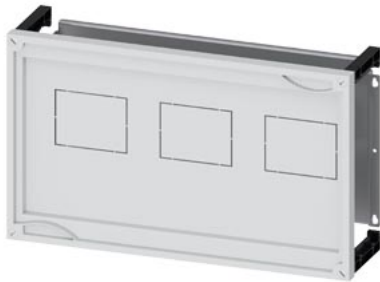


ALPHA 400/630/1250 DIN assembly kit molded case circuit breaker 3 x 3VA20 and 3VA22 up to 250 A with front mounted rotary operator H = 300 mm, W = 500 mm vertical installation



Model	
product brand name	ALPHA
product designation	Assembly kit for 3VA2 molded-case circuit breakers
design of the product	1 x 3VA23/ 3VA24 630 A with front mounted rotary operator
cover plate version	with cutout
product component	
• grounding bus	No
• plastic cover plate	Yes
• mounting plate	Yes
Mechanical Design	
height	450 mm
width	500 mm
mounting position	vertical
Net Weight	2.887 kg

Approvals Certificates	
Environment	General Product Approval

[Environmental Con-
firmations](#)

[Environmental Con-
firmations](#)



[Confirmation](#)



Test Certificates	other
-------------------	-------

[Special Test Certific-
ate](#)

[Confirmation](#)

[Miscellaneous](#)



Further information

Information on the packaging

<https://support.industry.siemens.com/cs/ww/en/view/109813875>

Information for data generation and storage

<https://support.industry.siemens.com/cs/ww/en/view/109995012>

Information- and Downloadcenter (Catalogs, Brochures,...)

<https://www.siemens.com/lowvoltage/catalogs>

Industry Mall (Online ordering system)

<https://mall.industry.siemens.com/mall/en/en/Catalog/product?mlfb=8GK4736-2KK22>

Service&Support (Manuals, Certificates, Characteristics, FAQs,...)

<https://support.industry.siemens.com/cs/ww/en/ps/8GK4736-2KK22>

Image database (product images, 2D dimension drawings, 3D models, device circuit diagrams, ...)

https://www.automation.siemens.com/bilddb/cax_en.aspx?mlfb=8GK4736-2KK22

CAX-Online-Generator

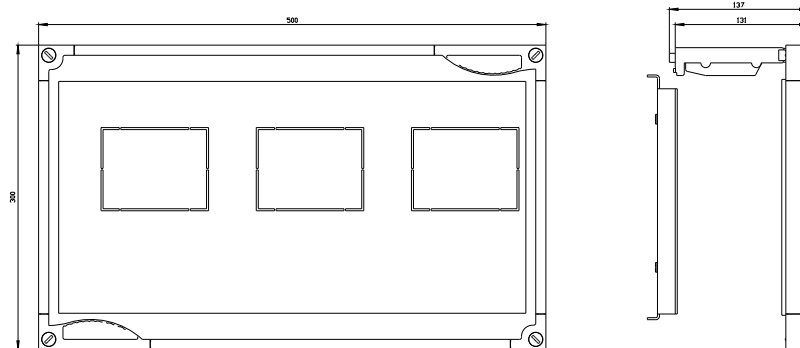
<https://www.siemens.com/cax>

Tender specifications

<https://www.siemens.com/specifications>

Characteristic curves

https://curves.siemens.com/curves/?mmp_prod_noCOMP='HAUPT'&mmp_prod_no=



last modified:

1/15/2026 

