

guide frame for 3WL10 - 4-pole front additional main connection equivalent to withdrawable circuit breaker without frame accessories for circuit breakers 3WL10

Model	
product brand name	SENTRON
product designation	Guide frame
design of the product	main terminal, on front
Product function	
product function	Extension is included
accessories	Accessories for 3WL10 circuit breakers
Mechanical Design	
height	348 mm
width	363 mm
depth	271 mm
Net Weight	28.93 kg

Approvals Certificates		
Environment	General Product Approval	other

[Environmental Confirmations](#)



[Confirmation](#)

[Confirmation](#)

other



Further information

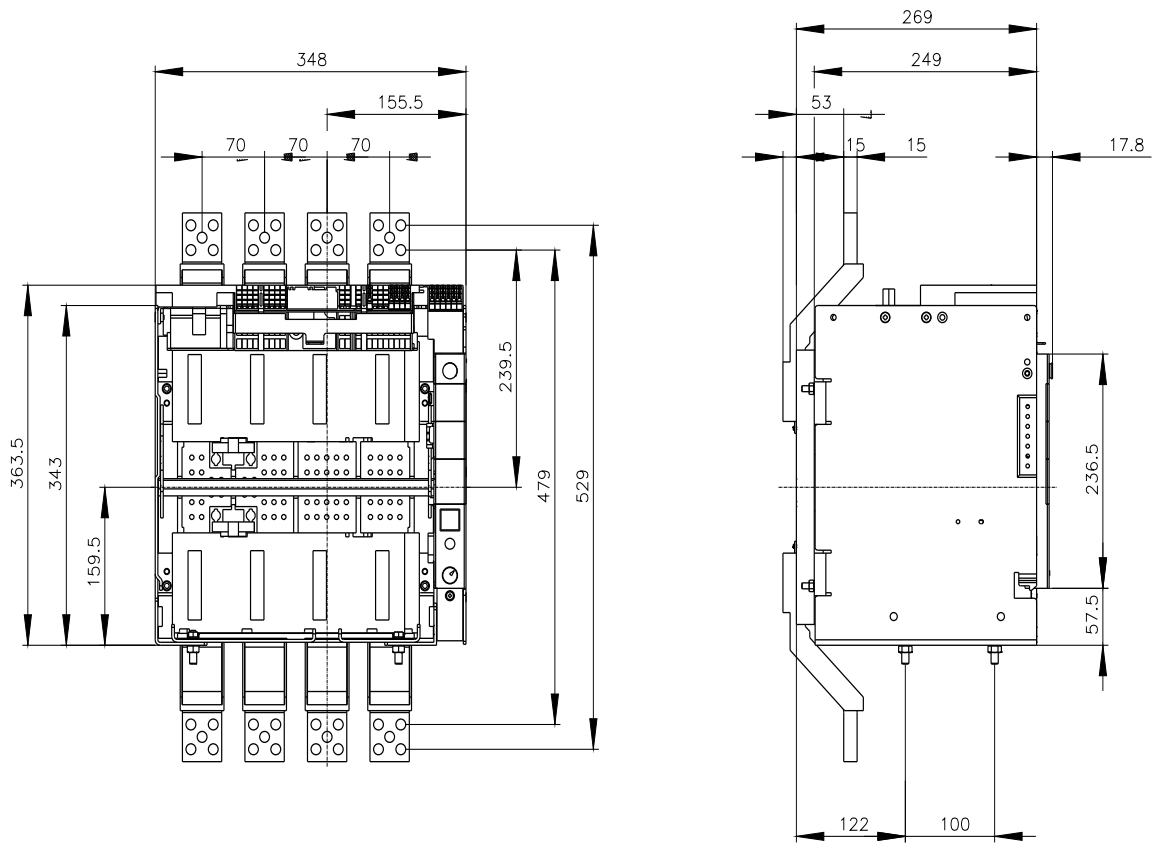
- Information on the packaging
<https://support.industry.siemens.com/cs/ww/en/view/109813875>
- Information for data generation and storage
<https://support.industry.siemens.com/cs/ww/en/view/109995012>
- Information- and Downloadcenter (Catalogs, Brochures,...)
<https://www.siemens.com/lowvoltage/catalogs>
- Industry Mall (Online ordering system)
<https://mall.industry.siemens.com/mall/en/en/Catalog/product?mlfb=3VW8112-0BE01>
- Service&Support (Manuals, Certificates, Characteristics, FAQs,...)
<https://support.industry.siemens.com/cs/ww/en/ps/3VW8112-0BE01>
- Image database (product images, 2D dimension drawings, 3D models, device circuit diagrams, ...)
https://www.automation.siemens.com/bilddb/cax_en.aspx?mlfb=3VW8112-0BE01
- CAx-Online-Generator
<https://www.siemens.com/cax>

Tender specifications

<https://www.siemens.com/specifications>

Characteristic curves

https://curves.simaris.siemens.com/curves/<mmp_prod_noCOMP='HAUPT'></mmp_prod_no>



last modified:

4/4/2025 

