



AS-Interface adapter element, black, with external auxiliary voltage, for 4 signaling elements, 24 V DC

product brand name	SIRIUS
product designation	AS-Interface module
<b>General technical data</b>	
type of voltage of the operating voltage	DC
operating voltage	18.5 ... 31.6 V
<ul style="list-style-type: none"> <li>• at DC rated value</li> <li>• 1 at DC rated value</li> </ul>	24 V
consumed current maximum	50 mA
reference code according to EN 61346-2	B
<b>Communication</b>	
design of the interface AS-Interface protocol	Yes
<b>Enclosure</b>	
height	67 mm
width	52 mm
outer diameter of the signal column element	50 mm
material	PC
color	black
fastening method	Bayonet
protection class IP	IP54
<b>Ambient conditions</b>	
ambient temperature during operation	-20 ... +50 °C
<b>Approvals Certificates</b>	
General Product Approval	other



[Confirmation](#)



[Confirmation](#)

other

Environment

[Miscellaneous](#)

[Confirmation](#)



[Environmental Confirmations](#)



**Further information**

Information on the packaging

<https://support.industry.siemens.com/cs/ww/en/view/109813875>

Information for data generation and storage

<https://support.industry.siemens.com/cs/ww/en/view/109995012>

Information- and Downloadcenter (Catalogs, Brochures,...)

<https://www.siemens.com/ic10>

Industry Mall (Online ordering system)

<https://mall.industry.siemens.com/mall/en/en/Catalog/product?mlfb=8WD4228-0BB>

Cax online generator

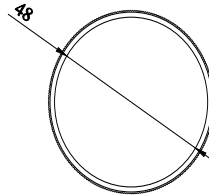
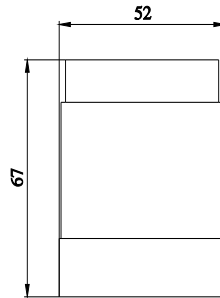
<https://support.automation.siemens.com/WW/CAXorder/default.aspx?lang=en&mlfb=8WD4228-0BB>

Service&Support (Manuals, Certificates, Characteristics, FAQs,...)

<https://support.industry.siemens.com/cs/ww/en/ps/8WD4228-0BB>

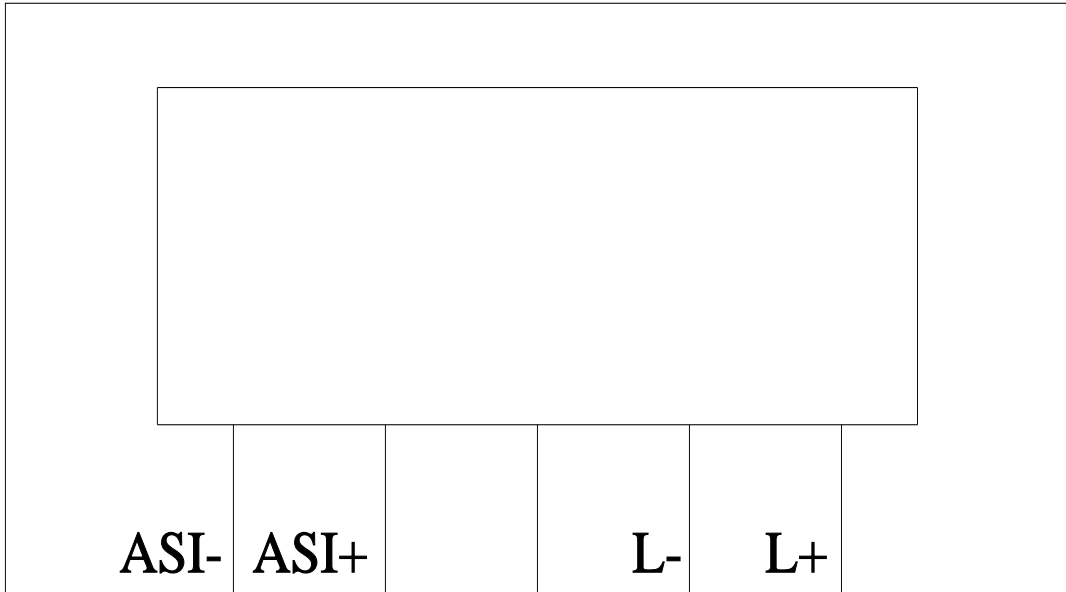
Image database (product images, 2D dimension drawings, 3D models, device circuit diagrams, EPLAN macros, ...)

[https://www.automation.siemens.com/bilddb/cax\\_de.aspx?mlfb=8WD4228-0BB&lang=en](https://www.automation.siemens.com/bilddb/cax_de.aspx?mlfb=8WD4228-0BB&lang=en)



8WD42...\_ALL

**-B**



---

last modified:

2/17/2026 