

SIRIUS Compact load feeder Reversing starter 400 V 24 V AC/DC 50...60 Hz  
8...32 A IP20 Connection main circuit: plug-in, without terminals Connection control  
circuit: plug-in, without terminals

|  |   |
|--|---|
| <b>product brand name</b>  | SIRIUS  |
| <b>product designation</b>   | compact starter   |
| <b>design of the product</b>   | reversing starter   |
| <b>product type designation</b>  | 3RA62   |
| <b>General technical data</b>  |   |
| product function control circuit interface to parallel wiring                              | Yes   |
| product extension auxiliary switch   | Yes   |
| <b>power loss [W] for rated value of the current</b>                                       |   |
| • at AC in hot operating state   | 5.4 W   |
| • at AC in hot operating state per pole  | 1.8 W   |
| • without load current share typical   | 3.5 W   |
| <b>insulation voltage rated value</b>  | 690 V   |
| <b>degree of pollution</b>   | 3   |
| <b>surge voltage resistance rated value</b>  | 6 000 V   |
| <b>maximum permissible voltage for protective separation</b>                               |   |
| • between main and auxiliary circuit   | 400 V   |
| • between auxiliary and auxiliary circuit  | 250 V   |
| • between control and auxiliary circuit  | 300 V   |
| <b>degree of protection NEMA rating</b>  | other   |
| <b>shock resistance</b>  | a=60 m/s <sup>2</sup> (6g) with 10 ms per 3 shocks in all axes  |
| <b>vibration resistance</b>  | f = 4 ... 5.8 Hz, d = 15 mm; f = 5.8 ... 500 Hz, a = 20 m/s <sup>2</sup> ; 10 cycles  |
| <b>mechanical service life (operating cycles)</b>  |   |
| • of the main contacts typical   | 10 000 000  |
| • of auxiliary contacts typical  | 10 000 000  |
| • of the signaling contacts typical  | 10 000 000  |
| <b>electrical endurance (operating cycles) of auxiliary contacts</b>                       |   |
| • at DC-13 at 6 A at 24 V typical  | 30 000  |
| • at AC-15 at 6 A at 230 V typical   | 200 000   |
| <b>type of coordination</b>  | continuous operation according to IEC 60947-6-2   |
| <b>reference code according to IEC 81346-2</b>   | Q   |
| <b>Substance Prohibitance (day/month/year)</b>   | 05/01/2012  |
| <b>SVHC substance name</b>   | Lead CAS-No. 7439-92-1<br>Lead monoxide (lead oxide) CAS-No. 1317-36-8<br>2-(2H-benzotriazol-2-yl)-4-(1,1,3,3-tetramethylbutyl)phenol (UV-329) CAS-No. 3147-75-9<br>2-methyl-1-(4-methylthiophenyl)-2-morpholinopropan-1-one CAS-No. 71868-10-5<br>Melamine CAS-No. 108-78-1<br>6,6'-di-tert-butyl-2,2'-methylenedi-p-cresol CAS-No. 119-47-1 |
| <b>Net Weight</b>  | 2.491 kg  |
| <b>Ambient conditions</b>  |   |
| installation altitude at height above sea level maximum                                    | 2 000 m   |
| <b>ambient temperature</b>   |   |
| • during operation   | -20 ... +60 °C  |
| • during storage   | -55 ... +80 °C  |
| • during transport   | -55 ... +80 °C  |
| relative humidity during operation   | 10 ... 90 %   |
| <b>Main circuit</b>  |   |
| <b>number of poles for main current circuit</b>  | 3   |
| <b>adjustable current response value current of the current-dependent overload release</b> | 8 ... 32 A  |

|   |   |
|---|---|
| <b>formula for making capacity limit current</b>                                      | 12 x I <sub>e</sub>   |
| <b>formula for limit current breaking capacity</b>                                    | 10 x I <sub>e</sub>   |
| <b>yielded mechanical performance for 4-pole AC motor</b>                             |   |
| • at 400 V rated value  | 15 kW   |
| operating voltage at AC-3 rated value maximum   | 400 V   |
| <b>operational current</b>  |   |
| • at AC at 400 V rated value  | 32 A  |
| • at AC-3 at 400 V rated value  | 32 A  |
| • at AC-43  |   |
| — at 400 V rated value  | 29 A  |
| <b>operating power</b>  |   |
| • at AC-3 at 400 V rated value  | 15 kW   |
| • at AC-43  |   |
| — at 400 V rated value  | 15 000 W  |
| <b>no-load switching frequency</b>  | 3 600 1/h   |
| <b>operating frequency</b>  |   |
| • at AC-41 according to IEC 60947-6-2 maximum   | 750 1/h   |
| • at AC-43 according to IEC 60947-6-2 maximum   | 250 1/h   |
| <b>Control circuit/ Control</b>   |   |
| <b>type of voltage</b>  | AC/DC   |
| <b>control supply voltage 1 at AC</b>   |   |
| • at 50 Hz rated value  | 24 V  |
| • at 50 Hz  | 24 V  |
| • at 60 Hz rated value  | 24 V  |
| • at 60 Hz  | 24 V  |
| <b>control supply voltage frequency</b>   |   |
| • 1 rated value   | 50 Hz   |
| • 2 rated value   | 60 Hz   |
| <b>control supply voltage 1 at DC rated value</b>                                     | 24 V  |
| <b>control supply voltage 1 at DC</b>   | 24 V  |
| <b>holding power</b>  |   |
| • at AC maximum   | 3.5 W   |
| • at DC maximum   | 3.1 W   |
| <b>Auxiliary circuit</b>  |   |
| <b>number of NC contacts for auxiliary contacts</b>                                   | 0   |
| <b>number of NO contacts for auxiliary contacts</b>                                   | 2   |
| number of NO contacts of instantaneous short-circuit trip unit for signaling contact  | 1   |
| number of CO contacts of the current-dependent overload release for signaling contact | 1   |
| <b>operational current of auxiliary contacts at AC-12 maximum</b>                     | 10 A  |
| operational current of auxiliary contacts at DC-13 at 250 V                           | 0.27 A  |
| <b>Protective and monitoring functions</b>  |   |
| <b>trip class</b>   | CLASS 10 and 20 adjustable  |
| <b>operating short-circuit current breaking capacity (I<sub>cs</sub>)</b>             |   |
| • at 400 V rated value  | 53 kA   |
| <b>UL/CSA ratings</b>   |   |
| <b>full-load current (FLA) for 3-phase AC motor</b>                                   |   |
| • at 480 V rated value  | 32 A  |
| yielded mechanical performance [hp] for 3-phase AC motor                              |   |
| • at 200/208 V rated value  | 7.5 hp  |
| • at 220/230 V rated value  | 10 hp   |
| • at 460/480 V rated value  | 20 hp   |
| <b>contact rating of auxiliary contacts according to UL</b>                           | contacts 21-22, 13-14, 43-44 Q600 / A600, contacts 77-78 R300 / B300, contacts 95-96-98 R300 / D300 |
| <b>Short-circuit protection</b>   |   |
| <b>product function short circuit protection</b>                                      | Yes   |
| <b>design of short-circuit protection</b>   | electromagnetic   |
| <b>design of the fuse link</b>  |   |

- for short-circuit protection of the auxiliary switch required
- for short-circuit protection of the signaling switch of the short-circuit release required
- for short-circuit protection of the signaling switch of the overload release required

fuse gL/gG: 10 A  
6A gL/gG/400V  
4A gL/gG/400V

#### Installation/ mounting/ dimensions

|                               |   |
|-------------------------------|---|
| mounting position             | any                                       |
| mounting position recommended | vertical, on horizontal standard DIN rail |
| fastening method              | screw and snap-on mounting                |
| height                        | 170 mm                                    |
| width                         | 90 mm                                     |
| depth                         | 165 mm                                    |

#### Connections/ Terminals

|   |  |
|---|--|
| product component removable terminal for main circuit   | Yes  |
| product component removable terminal for auxiliary and control circuit  | Yes  |
| type of electrical connection   |  |
| <ul style="list-style-type: none"> <li>• for main current circuit</li> <li>• for auxiliary and control circuit</li> </ul> | plug-in without terminals<br>plug-in without terminals |

#### Safety related data

|   |              |
|---|--------------|
| proportion of dangerous failures  |              |
| <ul style="list-style-type: none"> <li>• with low demand rate according to SN 31920</li> <li>• with high demand rate according to SN 31920</li> </ul> | 40 %<br>50 % |
| B10 value with high demand rate according to SN 31920   | 2 000 000    |
| failure rate [FIT] with low demand rate according to SN 31920   | 100 FIT      |

#### IEC 61508

|   |      |
|---|------|
| T1 value for proof test interval or service life according to IEC 61508 | 20 a |
|---|------|

#### Electrical Safety

|   |             |
|---|-------------|
| protection class IP on the front according to IEC 60529 | IP20        |
| touch protection on the front according to IEC 60529    | finger-safe |

#### Communication/ Protocol

|   |          |
|---|----------|
| product function bus communication  | No       |
| protocol is supported   |          |
| <ul style="list-style-type: none"> <li>• AS-Interface protocol</li> <li>• IO-Link protocol</li> </ul> | No<br>No |
| product function control circuit interface with IO link   | No       |

#### Electromagnetic compatibility

|   |  |
|---|--|
| conducted interference  |  |
| <ul style="list-style-type: none"> <li>• due to burst according to IEC 61000-4-4</li> <li>• due to conductor-earth surge according to IEC 61000-4-5</li> <li>• due to conductor-conductor surge according to IEC 61000-4-5</li> <li>• due to high-frequency radiation according to IEC 61000-4-6</li> </ul> | 4 kV main contacts, 2 kV auxiliary contacts<br>4 kV main contacts, 2 kV auxiliary contacts<br>2 kV main contacts, 1 kV auxiliary contacts<br>0.15-80Mhz at 10V |
| field-based interference according to IEC 61000-4-3   | 10 V/m   |
| electrostatic discharge according to IEC 61000-4-2  | 8 kV   |
| conducted HF interference emissions according to CISPR11  | 150 kHz ... 30 MHz Class A   |
| field-bound HF interference emission according to CISPR11   | 30 ... 1000 MHz Class A  |

#### Supply voltage

|   |    |
|---|----|
| Supply voltage required Auxiliary voltage | No |
|---|----|

#### Display

|                |   |
|----------------|---|
| number of LEDs | 3 |
|----------------|---|

#### Approvals Certificates

|             |                          |
|-------------|--------------------------|
| Environment | General Product Approval |
|-------------|--------------------------|

[Environmental Con-  
firmations](#)



|                               |     |                   |                   |                      |       |
|-------------------------------|-----|-------------------|-------------------|----------------------|-------|
| General Product Ap-<br>proval | EMV | Functional Safety | Test Certificates | Maritime application | other |
|-------------------------------|-----|-------------------|-------------------|----------------------|-------|



[Type Examination Cer-  
tificate](#)

[Type Test Certific-  
ates/Test Report](#)



[Confirmation](#)

|       |                 |
|-------|-----------------|
| other | Dangerous goods |
|-------|-----------------|

[Confirmation](#)



[Transport Information](#)

#### Further information

##### Information on the packaging

<https://support.industry.siemens.com/cs/ww/en/view/109813875>

##### Information for data generation and storage

<https://support.industry.siemens.com/cs/ww/en/view/109995012>

##### Information- and Downloadcenter (Catalogs, Brochures,...)

<https://www.siemens.com/ic10>

##### Industry Mall (Online ordering system)

<https://mall.industry.siemens.com/mall/en/en/Catalog/product?mlfb=3RA6250-0EB30>

##### Service&Support (Manuals, Certificates, Characteristics, FAQs,...)

<https://support.industry.siemens.com/cs/ww/en/ps/3RA6250-0EB30>

##### Image database (product images, 2D dimension drawings, 3D models, device circuit diagrams, EPLAN macros, ...)

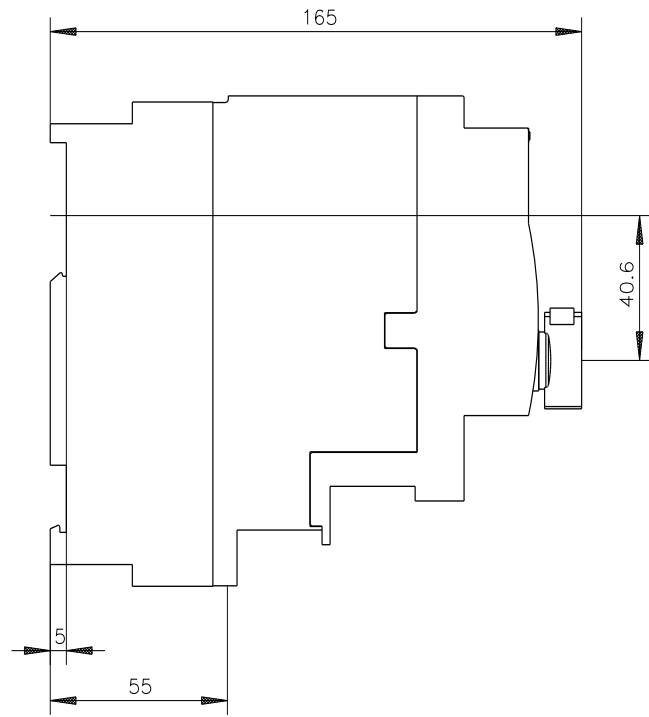
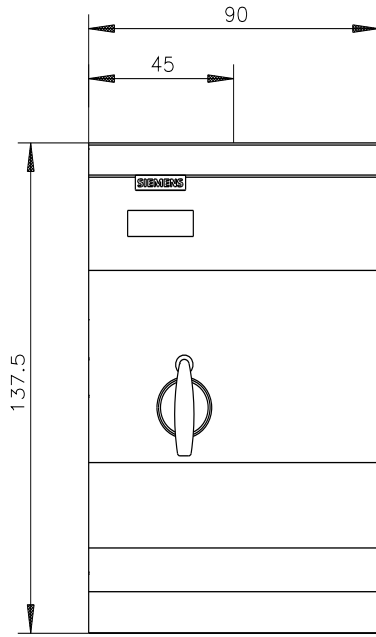
[https://www.automation.siemens.com/bilddb/cax\\_de.aspx?mlfb=3RA6250-0EB30&lang=en](https://www.automation.siemens.com/bilddb/cax_de.aspx?mlfb=3RA6250-0EB30&lang=en)

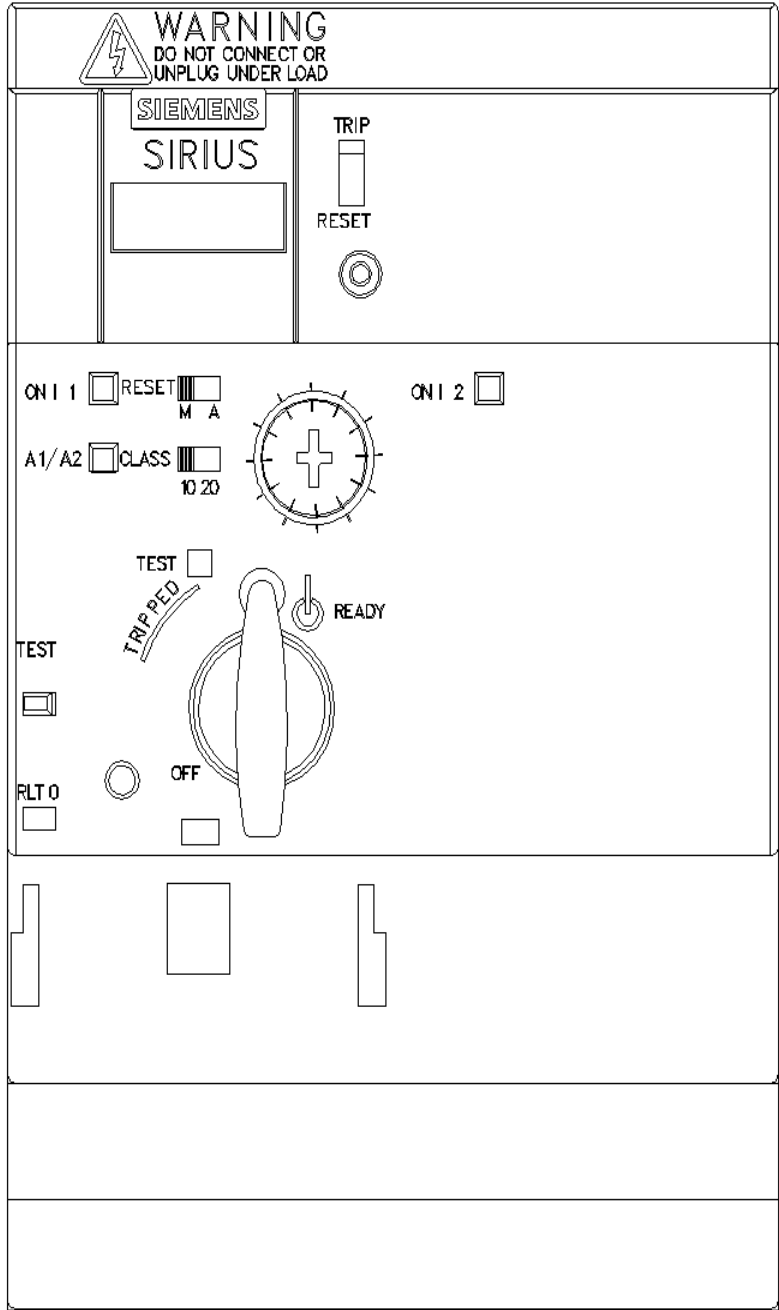
##### Cax online generator

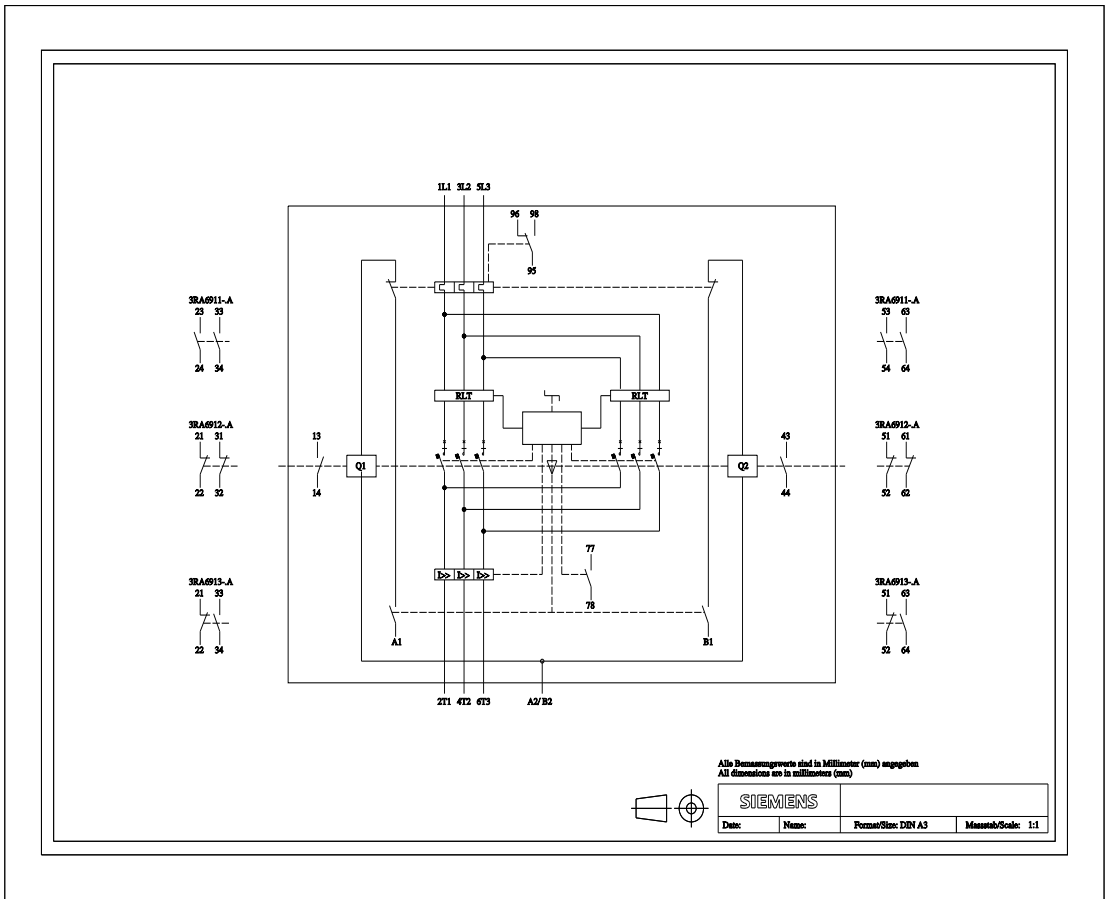
<https://support.automation.siemens.com/WW/CAXorder/default.aspx?lang=en&mlfb=3RA6250-0EB30>

##### Characteristic curves

[https://curves.simaris.siemens.com/curves/<mmp\\_prod\\_noCOMP="HAUPT"></mmp\\_prod\\_no>](https://curves.simaris.siemens.com/curves/<mmp_prod_noCOMP=)







last modified:

4/4/2026