



stand-alone assembly support for 3RU21/3RB30/3RB31/3RR2 Size S2 Stand-alone installation Main circuit: Screw

product brand name	SIRIUS
product category	Terminal support
product designation	individual mount
product type designation	3RU29
General technical data	
size of overload relay	S2
protection class IP on the front	IP20
• according to IEC 60529	
Substance Prohibittance (day/month/year)	10/15/2014
Net Weight	0.179 kg
Ambient conditions	
ambient temperature	-20 ... +70 °C
• during operation	
• during storage	
Electrical Safety	
protection class IP on the front according to IEC 60529	IP20
touch protection on the front according to IEC 60529	finger-safe, for vertical contact from the front
Installation/ mounting/ dimensions	
fastening method	screw and snap-on mounting onto 35 mm DIN rail
height	105 mm
width	55 mm
depth	110 mm
Connections/ Terminals	
type of electrical connection	screw-type terminals
• for main current circuit	
type of connectable conductor cross-sections	1x (1 ... 50 mm ²) 1x (1 ... 50 mm ²) 1x (1 ... 35 mm ²) 1x (18 ... 1)
• for main contacts	
— solid	
— stranded	
— finely stranded with core end processing	
• for AWG cables for main contacts	
Approvals Certificates	
Environment	General Product Approval

[Environmental Conformations](#)



Test Certificates

Maritime application

[Type Test Certificates/Test Report](#)

[Special Test Certificate](#)



Maritime application

other



[Confirmation](#)



Further information

Information on the packaging

<https://support.industry.siemens.com/cs/ww/en/view/109813875>

Information for data generation and storage

<https://support.industry.siemens.com/cs/ww/en/view/109995012>

Information- and Downloadcenter (Catalogs, Brochures,...)

<https://www.siemens.com/ic10>

Industry Mall (Online ordering system)

<https://mall.industry.siemens.com/mall/en/en/Catalog/product?mlfb=3RU2936-3AA01>

Cax online generator

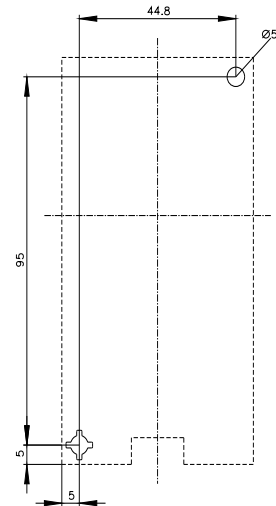
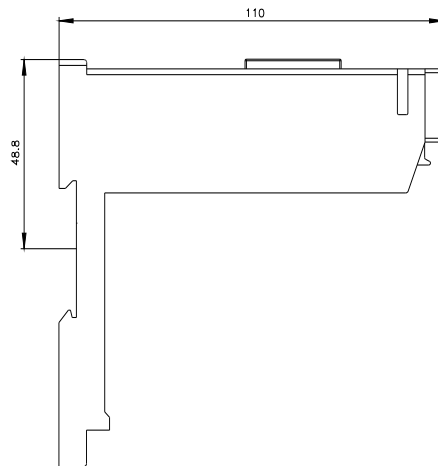
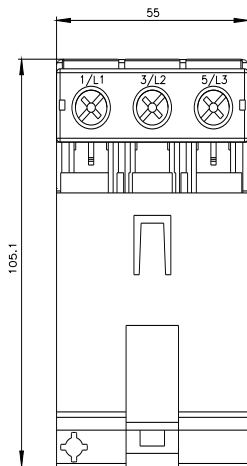
<https://support.automation.siemens.com/WW/CAXorder/default.aspx?lang=en&mlfb=3RU2936-3AA01>

Service&Support (Manuals, Certificates, Characteristics, FAQs,...)

<https://support.industry.siemens.com/cs/ww/en/ps/3RU2936-3AA01>

Image database (product images, 2D dimension drawings, 3D models, device circuit diagrams, EPLAN macros, ...)

https://www.automation.siemens.com/bilddb/cax_de.aspx?mlfb=3RU2936-3AA01&lang=en



1/L1

3/L2

5/L3

last modified:

4/2/2025 