

shunt release 90-110 V AC, 50/60 Hz, 100% OP 70-190 V AC, 50/60 Hz, 5 s
switch-on duration 70-190 V DC, 5 s switch-on duration with spring-loaded terminal
for 3RV2 motor starter protector/circuit breaker

product brand name	SIRIUS
product category	Auxiliary release
product designation	shunt release
product type designation	3RV29
suitability for use	motor circuit breaker
General technical data	
certificate of suitability	CE / UL / CSA
size of the circuit-breaker	S00, S0, S2, S3
closing power at DC minimum	13 W
insulation voltage	
• rated value	690 V
• with degree of pollution 3 at AC rated value	690 V
degree of pollution	3
protection class IP on the front according to IEC 60529	IP20
break time maximum	20 ms
reference code according to DIN 40719 extended according to IEC 204-2 according to IEC 750	F
reference code according to EN 61346-2	F
Substance Prohibitance (day/month/year)	05/01/2012
Net Weight	0.18 kg
type of voltage of the control supply voltage	AC
control supply voltage 1 at AC	
• at 50 Hz	90 ... 110 V
• at 60 Hz	90 ... 110 V
control supply voltage frequency 1	50 ... 60 Hz
number of NC contacts for auxiliary contacts instantaneous contact	0
number of NO contacts for auxiliary contacts	
• instantaneous contact	0
• leading contact	0
number of CO contacts of auxiliary contacts instantaneous contact	0
Ambient conditions	
ambient temperature	
• during operation	-20 ... +60 °C
• during storage	-50 ... +80 °C
Electrical Safety	
protection class IP on the front according to IEC 60529	IP20
touch protection on the front according to IEC 60529	finger-safe, for vertical contact from the front
Short-circuit protection	
design of short-circuit protection	fuse
Installation/ mounting/ dimensions	
fastening method	snap-on mounting
height	90 mm
width	19 mm
depth	68 mm
Connections/ Terminals	
type of electrical connection for auxiliary and control circuit	spring-loaded terminals
Approvals Certificates	

Environment	General Product Approval
-------------	--------------------------

[Environmental Confirmations](#)



Test Certificates	Maritime application
-------------------	----------------------

[Type Test Certificates/Test Report](#)

[Special Test Certificate](#)



Maritime application	other
----------------------	-------



[Confirmation](#)

[Miscellaneous](#)

[Confirmation](#)

[Miscellaneous](#)

other	Railway
-------	---------



[Special Test Certificate](#)

Further information

Information on the packaging

<https://support.industry.siemens.com/cs/ww/en/view/109813875>

Information for data generation and storage

<https://support.industry.siemens.com/cs/ww/en/view/109995012>

Information- and Downloadcenter (Catalogs, Brochures,...)

<https://www.siemens.com/ic10>

Industry Mall (Online ordering system)

<https://mall.industry.siemens.com/mall/en/en/Catalog/product?mlfb=3RV2902-2DF0>

Cax online generator

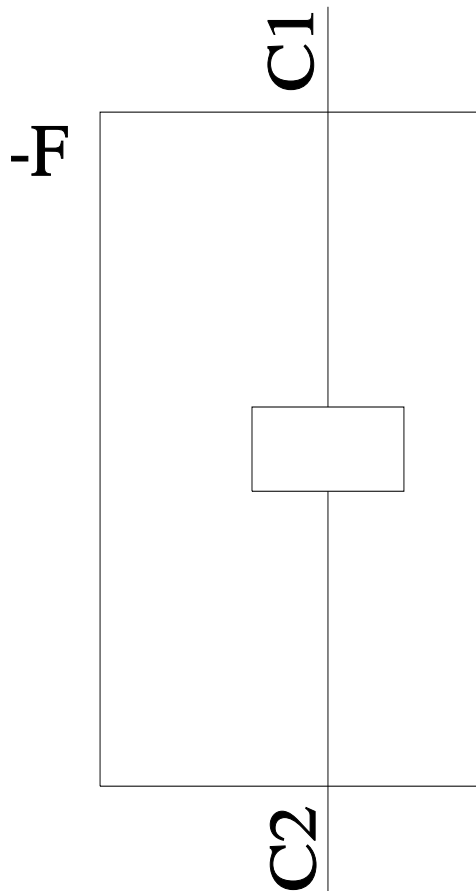
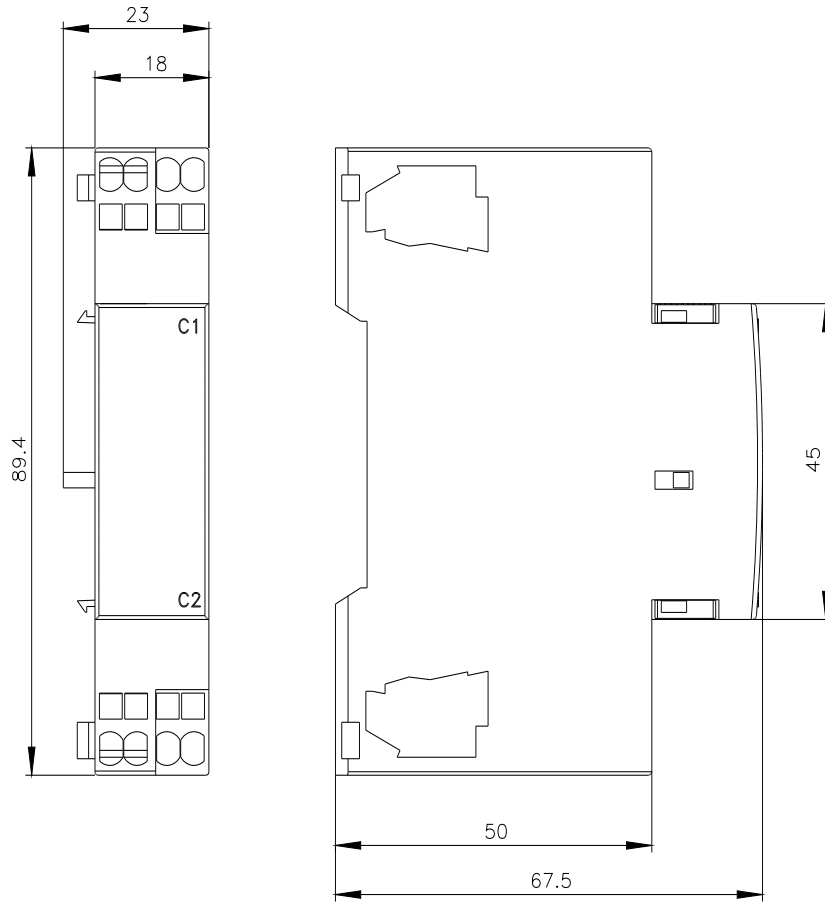
<https://support.automation.siemens.com/WW/CAXorder/default.aspx?lang=en&mlfb=3RV2902-2DF0>

Service&Support (Manuals, Certificates, Characteristics, FAQs,...)

<https://support.industry.siemens.com/cs/ww/en/ps/3RV2902-2DF0>

Image database (product images, 2D dimension drawings, 3D models, device circuit diagrams, EPLAN macros, ...)

https://www.automation.siemens.com/bilddb/cax_de.aspx?mlfb=3RV2902-2DF0&lang=en



last modified:

4/2/2025 