

3-phase busbars modular spacing 55 mm for 5 breakers + accessories fork shape connections



product brand name	SIRIUS
product category	Infeed systems
product designation	3-phase busbar
product type designation	3RV19
suitability for use	circuit-breakers 3RV2

**General technical data**

size of the circuit-breaker	S00, S0
protection class IP on the front according to IEC 60529	IP20
Substance Prohibittance (day/month/year)	07/01/2006
Net Weight	140 g
number of poles for main current circuit	3
operational current rated value	63 A

**Electrical Safety**

protection class IP on the front according to IEC 60529	IP20
touch protection on the front according to IEC 60529	finger-safe, for vertical contact from the front

**Connections/ Terminals**

type of electrical connection for main current circuit	screw-type terminals
--	----------------------

**Approvals Certificates**

**Environmental Product Declaration**

- global warming potential [CO2 eq] / during manufacturing 0.405 kg
- global warming potential [CO2 eq] / during operation 18.7 kg
- global warming potential [CO2 eq] / after end of life -0.0764 kg
- global warming potential [CO2 eq] / total 19.1 kg

**Environment      General Product Approval**

[Environmental Confirmations](#)



**Test Certificates      Maritime application**

[Type Test Certificates/Test Report](#)

[Special Test Certificate](#)



**Maritime application      other**



[Miscellaneous](#)

[Confirmation](#)



#### Further information

##### Information on the packaging

<https://support.industry.siemens.com/cs/ww/en/view/109813875>

##### Information for data generation and storage

<https://support.industry.siemens.com/cs/ww/en/view/109995012>

##### Information- and Downloadcenter (Catalogs, Brochures,...)

<https://www.siemens.com/ic10>

##### Industry Mall (Online ordering system)

<https://mall.industry.siemens.com/mall/en/en/Catalog/product?mlfb=3RV1915-2DB>

##### Cax online generator

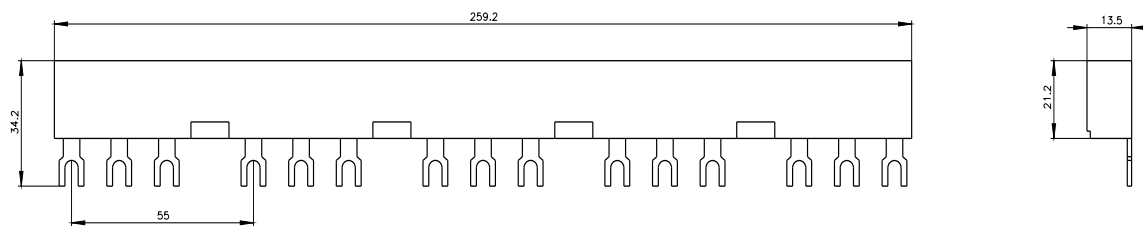
<https://support.automation.siemens.com/WW/CAXorder/default.aspx?lang=en&mlfb=3RV1915-2DB>

##### Service&Support (Manuals, Certificates, Characteristics, FAQs,...)

<https://support.industry.siemens.com/cs/ww/en/ps/3RV1915-2DB>

##### Image database (product images, 2D dimension drawings, 3D models, device circuit diagrams, EPLAN macros, ...)

[https://www.automation.siemens.com/bilddb/cax\\_de.aspx?mlfb=3RV1915-2DB&lang=en](https://www.automation.siemens.com/bilddb/cax_de.aspx?mlfb=3RV1915-2DB&lang=en)



last modified:

10/18/2025