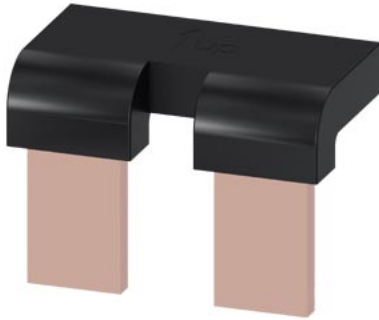


Accessory for 3KD size 1 Connecting jumper for series connection of 2 poles Box terminal contains 1 unit



Model	
product brand name	SETRON
product designation	Accessories for switch disconnectors
design of the product	bridging bar
suitability for use	For 3KD, size 1
product description	for series connection of 2 poles, 1 unit

Connections	
type of electrical connection for main current circuit	box terminal

Mechanical Design	
height	16.6 mm
width	29.6 mm
depth	21.3 mm
Net Weight	101 g

Approvals Certificates	
Environment	General Product Approval

[Environmental Con-  
firmations](#)

[Environmental Con-  
firmations](#)



[Miscellaneous](#)



[Confirmation](#)

General Product Approval	Test Certificates	Maritime application	other
--------------------------	-------------------	----------------------	-------



[Type Test Certific-  
ates/Test Report](#)



[Confirmation](#)



other
-------

[Miscellaneous](#)

Further information
---------------------

Information on the packaging

<https://support.industry.siemens.com/cs/ww/en/view/109813875>

Information for data generation and storage

<https://support.industry.siemens.com/cs/ww/en/view/109995012>

Information- and Downloadcenter (Catalogs, Brochures,...)

<https://www.siemens.com/lowvoltage/catalogs>

Industry Mall (Online ordering system)

<https://mall.industry.siemens.com/mall/en/en/Catalog/product?mlfb=3KD9118-1>

Service&Support (Manuals, Certificates, Characteristics, FAQs,...)

<https://support.industry.siemens.com/cs/ww/en/ps/3KD9118-1>

Image database (product images, 2D dimension drawings, 3D models, device circuit diagrams, ...)

[https://www.automation.siemens.com/bilddb/cax\\_en.aspx?mlfb=3KD9118-1](https://www.automation.siemens.com/bilddb/cax_en.aspx?mlfb=3KD9118-1)

CAx-Online-Generator

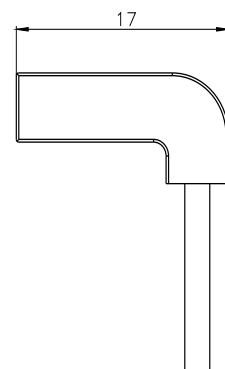
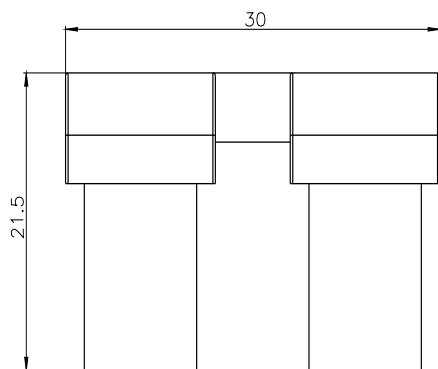
<https://www.siemens.com/cax>

Tender specifications

<https://www.siemens.com/specifications>

Characteristic curves

[https://curves.simaris.siemens.com/curves/<mmp\\_prod\\_noCOMP="HAUPT"></mmp\\_prod\\_no>](https://curves.simaris.siemens.com/curves/<mmp_prod_noCOMP=)



---

last modified:

4/3/2025 

