



LV HRC fuse base Sz. 4, 1-pole 1250 A, 690 V flat terminal

Model		
product brand name	SETRON	
product designation	LV HRC fuse base	
design of the product	LV HRC fuse base	
design of the thread of the connection screw	M12	
General technical data		
number of poles	1	
size of fuse system according to EN 60269-1	NH4	
utilization category	Without	
Supply voltage		
supply voltage		
• at AC	690 V	
• at DC	440 V	
Product details		
product component swivel-in mechanism	No	
maximum short-circuit current breaking capacity (I _{cu})		
• at AC rated value	120 kA	
• at DC rated value	25 kA	
Connections		
connectable conductor cross-section on box terminal		
• minimum	2.5 mm ²	
• maximum	50 mm ²	
tightening torque with screw-type terminals maximum	65 N·m	
type of electrical connection	With flat-type terminal	
• for main current circuit	flat connector	
Mechanical Design		
fastening method	fixed mounting	
fastening method bus-mounting	No	
Net Weight	3.107 kg	
Approvals Certificates		
Environment	General Product Approval	Test Certificates

[Environmental Confirmations](#)

[Environmental Confirmations](#)

[Confirmation](#)



[Special Test Certificate](#)

Maritime application other

Railway



Further information

Information on the packaging

<https://support.industry.siemens.com/cs/ww/en/view/109813875>

Information for data generation and storage

<https://support.industry.siemens.com/cs/ww/en/view/109995012>

Information- and Downloadcenter (Catalogs, Brochures,...)

<https://www.siemens.com/lowvoltage/catalogs>

Industry Mall (Online ordering system)

<https://mall.industry.siemens.com/mall/en/en/Catalog/product?mlfb=3NH3530>

Service&Support (Manuals, Certificates, Characteristics, FAQs,...)

<https://support.industry.siemens.com/cs/ww/en/ps/3NH3530>

Image database (product images, 2D dimension drawings, 3D models, device circuit diagrams, ...)

https://www.automation.siemens.com/bilddb/cax_en.aspx?mlfb=3NH3530

CAX-Online-Generator

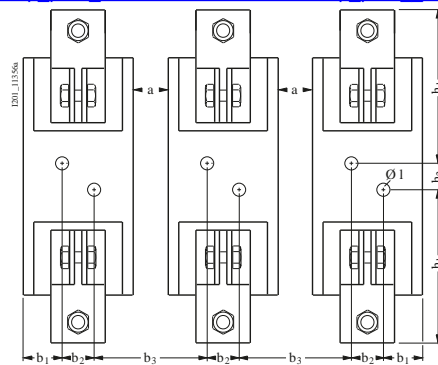
<https://www.siemens.com/cax>

Tender specifications

<https://www.siemens.com/specifications>

Characteristic curves

https://curves.simaris.siemens.com/curves/<mmp_prod_noCOMP='HAUPT'></mmp_prod_no>



Binägröße	Type	b ₁	b ₂	b ₃	h ₁	h ₂	Ø 1
4	3NH3 530	36	30	95	141	25	13

Hinweis: Diese NM-HRF-fuse werden ohne fied in w id u t p h a s e t u r f e r m a s s e i n
M i n d e s t a u s d e r o n e o 2 5 m i t 5 e i n g e h a t t e n r e c k t e n .

last modified:

8/8/2025

