



residual current operated circuit breaker, 2-pole, type AC, In: 16 A, 30 mA, Un AC: 230 V, N left Use of these devices is not permitted in all countries. Observe national installation regulations!

| Model  |   |
|--|---|
| product brand name   | SENTRON   |
| product designation  | Residual current operated circuit breaker                               |
| design of the product  | Instantaneous   |
| product type designation   | 5SV4  |
| product version  | N left  |
| General technical data   |   |
| number of poles  | 2   |
| size of installation devices according to DIN 43880                    | 1   |
| mechanical service life (operating cycles) typical                     | 10 000  |
| short-circuit current of series fuse maximum permissible               | 63 A  |
| short-circuit current rating   | 10 kA   |
| switching function short-term delayed                                  | No  |
| degree of pollution  | 2   |
| insulation voltage (Ui) rated value                                    | 2 000 V   |
| tripping fault current rated value                                     | 30 mA   |
| let-through current permissible  | 5 200 A   |
| I <sup>2</sup> t value permissible                                     | 58 000 A <sup>2</sup> ·s  |
| Supply voltage   |   |
| supply voltage for testing equipment minimum                           | 195 V   |
| value range of the supply voltage frequency                            | 50 Hz   |
| value range of the operating frequency                                 | 50 Hz   |
| value range of the supply voltage at AC                                | 230 V   |
| Protection class   |   |
| protection class IP  | IP20, if the distribution board is installed, with connected conductors |
| Breaking Capacity  |   |
| switching capacity current   |   |
| • according to IEC 61008-1 rated value                                 | 0.5 kA  |
| grid spacing   | 60 mm   |
| Dissipation  |   |
| power loss [W]   |   |
| • for rated value of the current at AC in hot operating state per pole | 0.4 W   |
| • maximum  | 0.8 W   |
| Appearance   |   |
| RAL color number   | 7 035   |

|                            |       |
|----------------------------|-------|
| RAL color number (similar) | 7 035 |
|----------------------------|-------|

### Product details

|   |     |
|---|-----|
| product feature silicon-free                        | Yes |
| product extension installable supplementary devices | Yes |

### Connections

|  |                      |
|--|----------------------|
| connectable conductor cross-section solid    |                      |
| • minimum                                    | 0.75 mm <sup>2</sup> |
| • maximum                                    | 35 mm <sup>2</sup>   |
| connectable conductor cross-section stranded |                      |
| • minimum                                    | 0.75 mm <sup>2</sup> |
| • maximum                                    | 35 mm <sup>2</sup>   |
| tightening torque with screw-type terminals  |                      |
| • minimum                                    | 2.5 N·m              |
| • maximum                                    | 3 N·m                |
| position of power supply cord                | top or bottom        |

### Mechanical Design

|                               |          |
|-------------------------------|----------|
| height                        | 90 mm    |
| width                         | 36 mm    |
| depth                         | 70 mm    |
| installation depth            | 70 mm    |
| number of modular width units | 2        |
| fastening method              | DIN rail |
| mounting position             | any      |
| Net Weight                    | 190 g    |

### Environmental conditions

|   |        |
|---|--------|
| ambient temperature during operation  |        |
| • minimum   | -25 °C |
| • maximum   | 45 °C  |
| ambient temperature during storage minimum                                  | -40 °C |
| number of test cycles for environmental testing according to IEC 60068-2-30 | 28     |

### Approvals Certificates

|             |                          |
|-------------|--------------------------|
| Environment | General Product Approval |
|-------------|--------------------------|

[Environmental Confirmations](#)



[Environmental Confirmations](#)



[Miscellaneous](#)

[Miscellaneous](#)

|                          |                   |       |
|--------------------------|-------------------|-------|
| General Product Approval | Test Certificates | other |
|--------------------------|-------------------|-------|

[Miscellaneous](#)



[Confirmation](#)



[Miscellaneous](#)

[Confirmation](#)

|       |         |                 |
|-------|---------|-----------------|
| other | Railway | Dangerous goods |
|-------|---------|-----------------|



[Special Test Certificate](#)

[Transport Information](#)

### Further information

Information on the packaging  
<https://support.industry.siemens.com/cs/ww/en/view/109813875>  
 Information for data generation and storage  
<https://support.industry.siemens.com/cs/ww/en/view/109995012>  
 Information- and Downloadcenter (Catalogs, Brochures,...)  
<https://www.siemens.com/lowvoltage/catalogs>

Industry Mall (Online ordering system)

<https://mall.industry.siemens.com/mall/en/en/Catalog/product?mlfb=5SV4311-0KL>

Service&Support (Manuals, Certificates, Characteristics, FAQs,...)

<https://support.industry.siemens.com/cs/ww/en/ps/5SV4311-0KL>

Image database (product images, 2D dimension drawings, 3D models, device circuit diagrams, ...)

[https://www.automation.siemens.com/bilddb/cax\\_en.aspx?mlfb=5SV4311-0KL](https://www.automation.siemens.com/bilddb/cax_en.aspx?mlfb=5SV4311-0KL)

CAX-Online-Generator

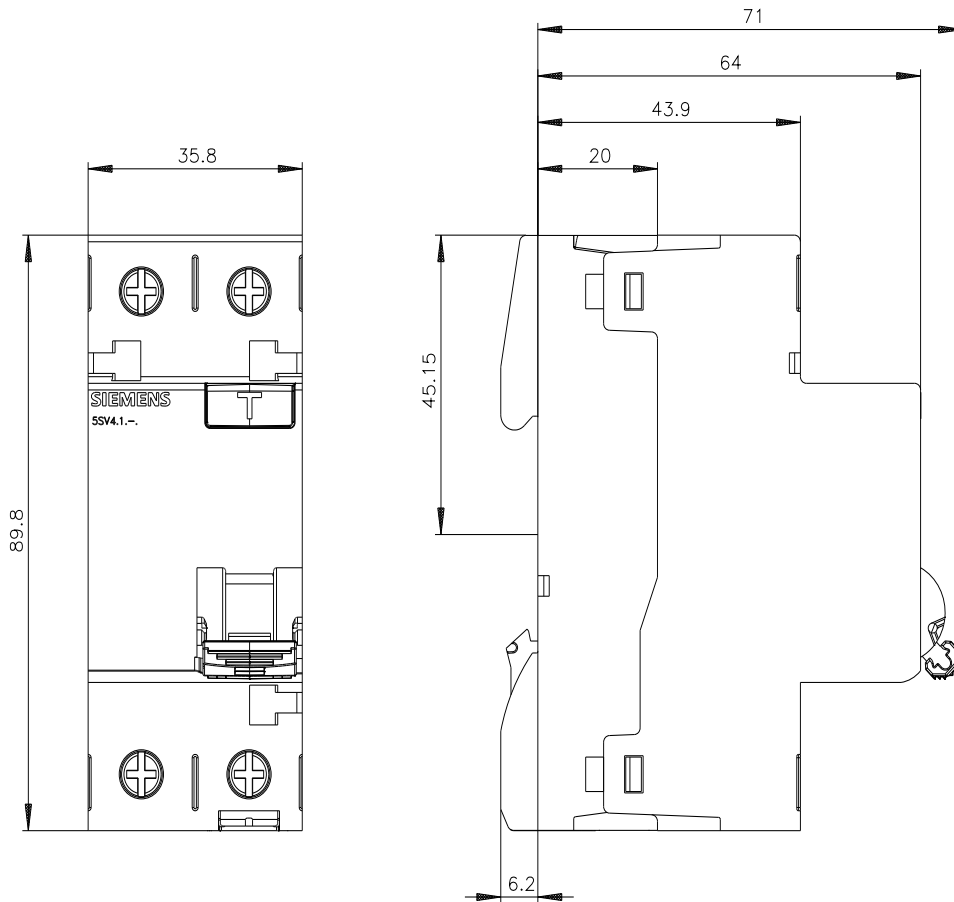
<https://www.siemens.com/cax>

Tender specifications

<https://www.siemens.com/specifications>

Characteristic curves

[https://curves.simarisiemens.com/curves/<mmp\\_prod\\_noCOMP='HAUPT'></mmp\\_prod\\_no>](https://curves.simarisiemens.com/curves/<mmp_prod_noCOMP='HAUPT'></mmp_prod_no>)





last modified:

10/9/2025 

