











residual current operated circuit breaker, 2-pole, type AC, In: 16 A, 10 mA, Un AC: 230 V Use of these devices is not permitted in all countries. Observe national installation regulations!

| Model  |   |
|--|---|
| product brand name   | SENTRON   |
| product designation  | Residual current operated circuit breaker                               |
| design of the product  | Instantaneous   |
| product type designation   | 5SV4  |
| General technical data   |   |
| number of poles  | 2   |
| size of installation devices according to DIN 43880                    | 1   |
| mechanical service life (operating cycles) typical                     | 10 000  |
| short-circuit current of series fuse maximum permissible               | 63 A  |
| short-circuit current rating   | 10 kA   |
| switching function short-term delayed                                  | No  |
| degree of pollution  | 2   |
| insulation voltage (Ui) rated value                                    | 2 000 V   |
| tripping fault current rated value                                     | 10 mA   |
| let-through current permissible  | 5 200 A   |
| I <sup>2</sup> t value permissible                                     | 58 000 A <sup>2</sup> ·s  |
| Supply voltage   |   |
| supply voltage for testing equipment minimum                           | 100 V   |
| value range of the supply voltage frequency                            | 50 Hz   |
| value range of the operating frequency                                 | 50 Hz   |
| value range of the supply voltage at AC                                | 230/400 V   |
| Protection class   |   |
| protection class IP  | IP20, if the distribution board is installed, with connected conductors |
| Breaking Capacity  |   |
| switching capacity current   |   |
| • according to IEC 61008-1 rated value                                 | 0.5 kA  |
| grid spacing   | 60 mm   |
| Dissipation  |   |
| power loss [W]   |   |
| • for rated value of the current at AC in hot operating state per pole | 0.7 W   |
| • maximum  | 1.4 W   |
| Appearance   |   |
| RAL color number   | 7 035   |
| RAL color number (similar)   | 7 035   |

| Product details  |  |  |                                       |
|--|--|--|---------------------------------------|
| product feature silicon-free   | Yes  |  |                                       |
| product extension installable supplementary devices  | Yes  |  |                                       |
| Connections  |  |  |                                       |
| connectable conductor cross-section solid  |  |  |                                       |
| • minimum  | 0.75 mm <sup>2</sup>   |  |                                       |
| • maximum  | 35 mm <sup>2</sup>   |  |                                       |
| connectable conductor cross-section stranded   |  |  |                                       |
| • minimum  | 0.75 mm <sup>2</sup>   |  |                                       |
| • maximum  | 35 mm <sup>2</sup>   |  |                                       |
| tightening torque with screw-type terminals  |  |  |                                       |
| • minimum  | 2.5 N·m  |  |                                       |
| • maximum  | 3 N·m  |  |                                       |
| position of power supply cord  | top or bottom  |  |                                       |
| Mechanical Design  |  |  |                                       |
| height   | 90 mm  |  |                                       |
| width  | 36 mm  |  |                                       |
| depth  | 70 mm  |  |                                       |
| installation depth   | 70 mm  |  |                                       |
| number of modular width units  | 2  |  |                                       |
| fastening method   | DIN rail   |  |                                       |
| mounting position  | any  |  |                                       |
| Net Weight   | 198 g  |  |                                       |
| Environmental conditions   |  |  |                                       |
| ambient temperature during operation   |  |  |                                       |
| • minimum  | -25 °C   |  |                                       |
| • maximum  | 45 °C  |  |                                       |
| ambient temperature during storage minimum   | -40 °C   |  |                                       |
| number of test cycles for environmental testing according to IEC 60068-2-30  | 28   |  |                                       |
| Approvals Certificates   |  |  |                                       |
| Environment  | General Product Approval   |  |                                       |
| <a href="#">Environmental Confirmations</a><br>    | <a href="#">Environmental Confirmations</a><br>  |  |                                       |
| General Product Approval   | EMV  |  |                                       |
| <a href="#">Miscellaneous</a><br>   | <a href="#">Confirmation</a><br>                 |  |                                       |
| Test Certificates  | other  | Railway                                  | Dangerous goods                       |
| <a href="#">Miscellaneous</a><br>   | <a href="#">Confirmation</a>   | <a href="#">Special Test Certificate</a> | <a href="#">Transport Information</a> |
| Further information  |  |  |                                       |
| Information on the packaging<br><a href="https://support.industry.siemens.com/cs/ww/en/view/109813875">https://support.industry.siemens.com/cs/ww/en/view/109813875</a><br>Information for data generation and storage<br><a href="https://support.industry.siemens.com/cs/ww/en/view/109995012">https://support.industry.siemens.com/cs/ww/en/view/109995012</a><br>Information- and Downloadcenter (Catalogs, Brochures,...)<br><a href="https://www.siemens.com/lowvoltage/catalogs">https://www.siemens.com/lowvoltage/catalogs</a><br>Industry Mall (Online ordering system)<br><a href="https://mall.industry.siemens.com/mall/en/en/Catalog/product?mlfb=5SV4111-0">https://mall.industry.siemens.com/mall/en/en/Catalog/product?mlfb=5SV4111-0</a> |  |  |                                       |

Service&Support (Manuals, Certificates, Characteristics, FAQs,...)

<https://support.industry.siemens.com/cs/ww/en/ps/5SV4111-0>

Image database (product images, 2D dimension drawings, 3D models, device circuit diagrams, ...)

[https://www.automation.siemens.com/bilddb/cax\\_en.aspx?mlfb=5SV4111-0](https://www.automation.siemens.com/bilddb/cax_en.aspx?mlfb=5SV4111-0)

CAx-Online-Generator

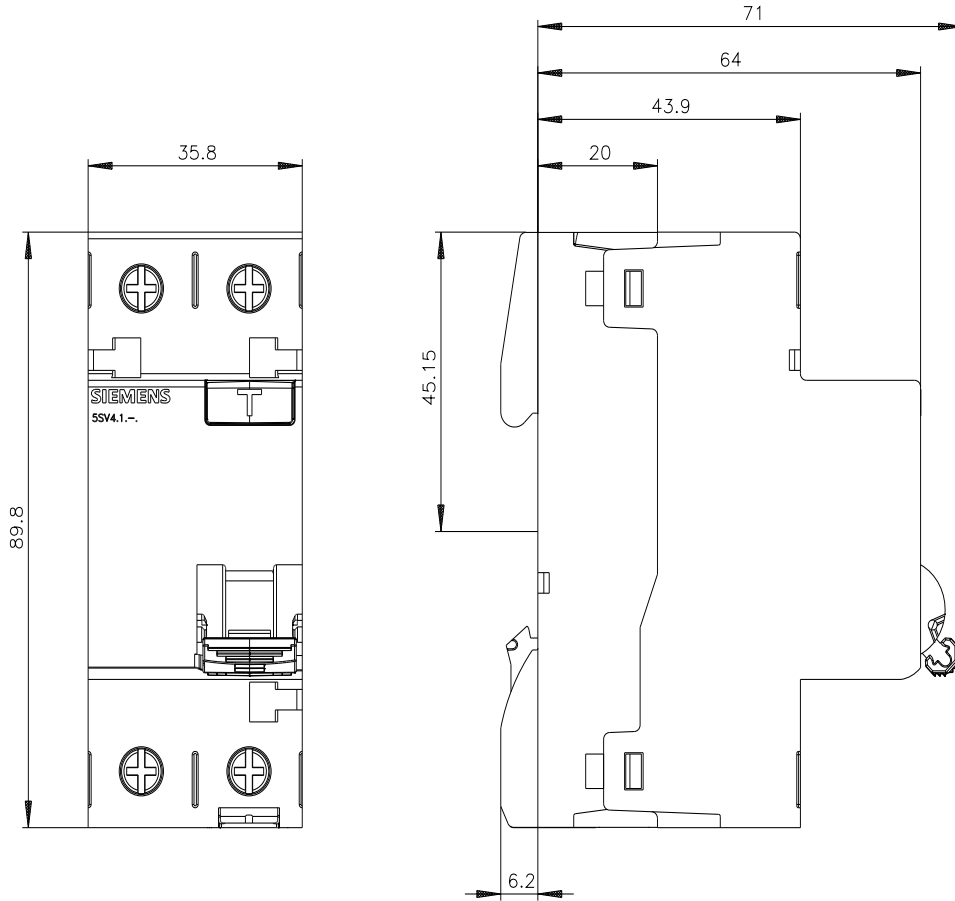
<https://www.siemens.com/cax>

Tender specifications

<https://www.siemens.com/specifications>

Characteristic curves

[https://curves.simaris.siemens.com/curves/<mmp\\_prod\\_noCOMP='HAUPT'></mmp\\_prod\\_no>](https://curves.simaris.siemens.com/curves/<mmp_prod_noCOMP='HAUPT'></mmp_prod_no>)





last modified:

10/9/2025

