

accessory for VL630, VL800, masking frame for door cut-out IP20, for withdrawable version with rotary op. mech. spare part product only for replacement purposes

Model		
product brand name	SENTRON	
product designation	cover frame for door cutout	
design of the product	IP20, for withdrawable version	
Accessories		
accessories	Accessory for VL630, VL800	
Mechanical Design		
Net Weight	252 g	
Approvals Certificates		
Environment	General Product Approval	Test Certificates

[Environmental Con-  
firmations](#)

[Environmental Con-  
firmations](#)



[Confirmation](#)



[Special Test Certific-  
ate](#)

other

[Miscellaneous](#)

[Confirmation](#)



### Further information

**Information on the packaging**

<https://support.industry.siemens.com/cs/ww/en/view/109813875>

**Information for data generation and storage**

<https://support.industry.siemens.com/cs/ww/en/view/109995012>

**Information- and Downloadcenter (Catalogs, Brochures,...)**

<https://www.siemens.com/lowvoltage/catalogs>

**Industry Mall (Online ordering system)**

<https://mall.industry.siemens.com/mall/en/en/Catalog/product?mlfb=3VL9600-8BH00>

**Service&Support (Manuals, Certificates, Characteristics, FAQs,...)**

<https://support.industry.siemens.com/cs/ww/en/ps/3VL9600-8BH00>

**Image database (product images, 2D dimension drawings, 3D models, device circuit diagrams, ...)**

[https://www.automation.siemens.com/bilddb/cax\\_en.aspx?mlfb=3VL9600-8BH00](https://www.automation.siemens.com/bilddb/cax_en.aspx?mlfb=3VL9600-8BH00)

**CAx-Online-Generator**

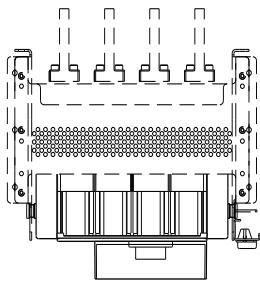
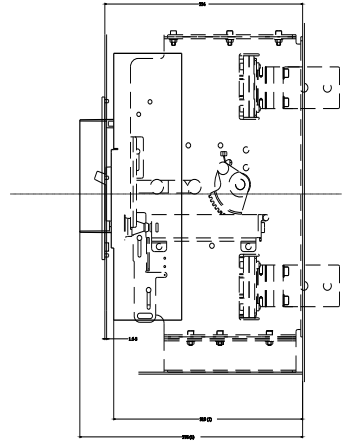
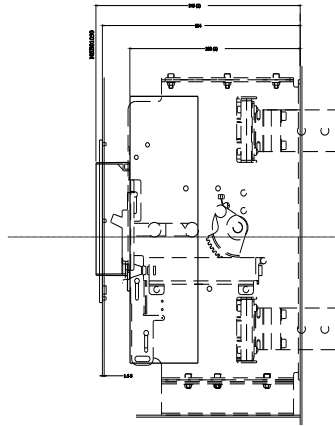
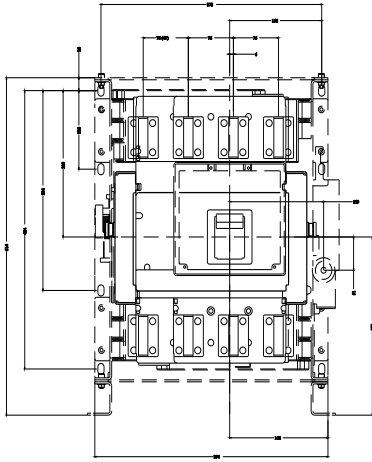
<https://www.siemens.com/cax>

**Tender specifications**

<https://www.siemens.com/specifications>

**Characteristic curves**

[https://curves.simaris.siemens.com/curves/<mmp\\_prod\\_noCOMP="HAUPT"></mmp\\_prod\\_no>](https://curves.simaris.siemens.com/curves/<mmp_prod_noCOMP=)



01 Antriebsmotor  
02 Regelsystem

last modified:

5/25/2025 