

accessory for VL630, VL800, mot. op. mech. w/ strd en. mech 220...250V AC/DC
spare part product only for replacement purposes

Model	
product brand name	SENTRON
product designation	Motorized operating mechanism with stored energy mechanism
design of the product	Accessories for VL630; VL800
type of the driving mechanism	Motorized operating mechanism with spring energy store
General technical data	
operating frequency maximum	60 1/h
Voltage	
fuse protection type for external auxiliary power supply required	NEOZED fuse (gL/gG): 2 A / miniature circuit breaker, C char.: 2 A
operating range factor control supply voltage rated value	
<ul style="list-style-type: none"> at DC initial value at DC full-scale value at AC at 50 Hz initial value at AC at 50 Hz full-scale value at AC at 60 Hz initial value at AC at 60 Hz full-scale value 	<ul style="list-style-type: none"> 0.85 1.1 0.85 1.1 0.85 1.1
Protection class	
protection class IP	IP30
Control current	
operating apparent power	250 VA
control supply voltage	
<ul style="list-style-type: none"> at DC rated value minimum at DC rated value maximum at AC at 50 Hz rated value minimum at AC at 50 Hz rated value maximum at AC at 60 Hz rated value minimum at AC at 60 Hz rated value maximum 	<ul style="list-style-type: none"> 250 V 220 V 220 V 250 V 220 V 250 V
Accessories	
accessories	Accessories for VL630; VL800
pulse duration minimum	50 ms
Connections	
stripped length	10 mm
connectable conductor cross-section solid	
<ul style="list-style-type: none"> minimum maximum 	<ul style="list-style-type: none"> 0.75 mm² 1.5 mm²
connectable conductor cross-section stranded	
<ul style="list-style-type: none"> minimum maximum 	<ul style="list-style-type: none"> 0.75 mm² 1.5 mm²
connectable conductor cross-section finely stranded with	

core end processing	
• minimum	0.75 mm ²
• maximum	1.5 mm ²
tightening torque	
• maximum	1 N·m

Mechanical Design

height	190 mm
width	173 mm
depth	160 mm
Net Weight	5.56 kg

Environmental conditions

ambient temperature during operation	
• minimum	-25 °C
• maximum	70 °C
ambient temperature during storage	
• minimum	-40 °C
• maximum	80 °C


Certificates

reference code according to IEC 81346-2	M
------------------------------------------------	---

Approvals Certificates

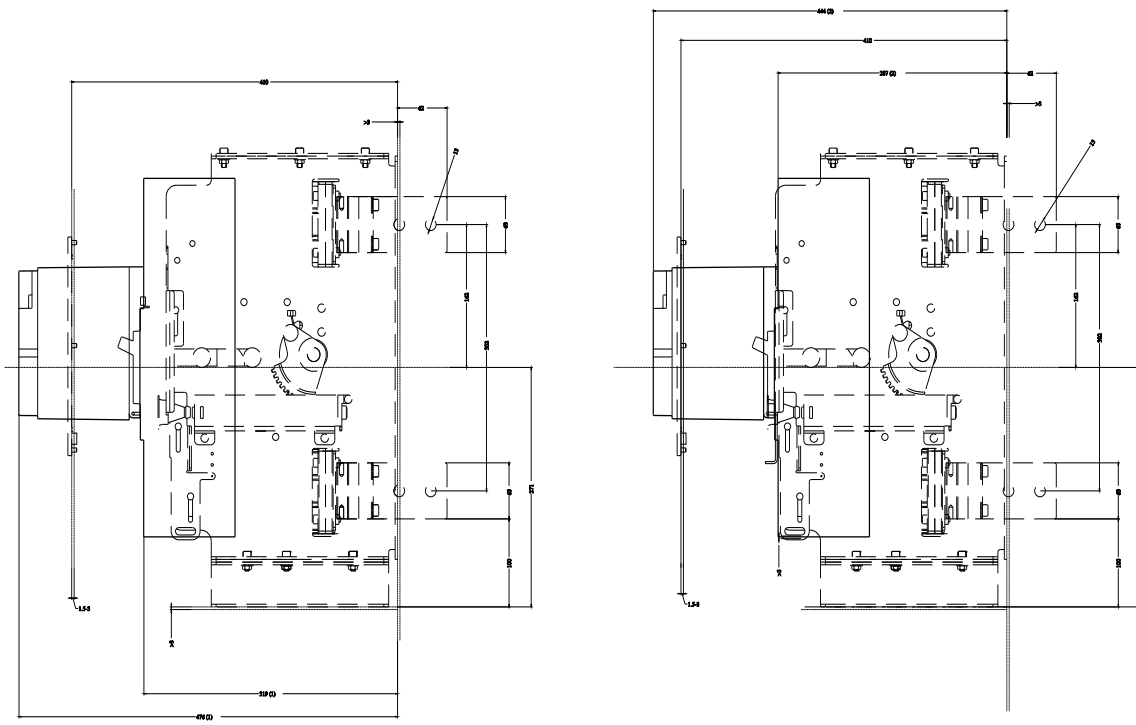
Environment	General Product Approval	Test Certificates
Environmental Confirmations 	Confirmation 	Special Test Certificate

other

Confirmation 	Miscellaneous
---------------------------------------------------------------------------------------------------------------------	-------------------------------

Further information

Information on the packaging
<https://support.industry.siemens.com/cs/ww/en/view/109813875>
Information for data generation and storage
<https://support.industry.siemens.com/cs/ww/en/view/109995012>
Information- and Downloadcenter (Catalogs, Brochures,...)
<https://www.siemens.com/lowvoltage/catalogs>
Industry Mall (Online ordering system)
<https://mall.industry.siemens.com/mall/en/en/Catalog/product?mlfb=3VL9600-3MQ00>
Service&Support (Manuals, Certificates, Characteristics, FAQs,...)
<https://support.industry.siemens.com/cs/ww/en/ps/3VL9600-3MQ00>
Image database (product images, 2D dimension drawings, 3D models, device circuit diagrams, ...)
https://www.automation.siemens.com/bilddb/cax_en.aspx?mlfb=3VL9600-3MQ00
CAX-Online-Generator
<https://www.siemens.com/cax>
Tender specifications
<https://www.siemens.com/specifications>
Characteristic curves
[https://curves.simaris.siemens.com/curves/<mmp_prod_noCOMP="HAUPT"></mmp_prod_no>](https://curves.simaris.siemens.com/curves/<mmp_prod_noCOMP=)



- (1) Anzeigebühne
- (2) Blaupause

last modified:

6/15/2025 

