

accessory for VL400, masking frame for door cut-out IP40, for fixed/plug-in mounting with RCD module (RCD) spare part product only for replacement purposes

Model		
product brand name	SENTRON	
product designation	cover frame for door cutout	
design of the product	IP40, for fixed-mounted version/plug-in version	
Accessories		
accessories	Accessory for VL400	
Mechanical Design		
Net Weight	0.044 kg	
Approvals Certificates		
Environment	General Product Approval	Test Certificates

[Environmental Con-
firmations](#)

[Environmental Con-
firmations](#)



[Confirmation](#)



[Special Test Certific-
ate](#)

other

[Confirmation](#)



[Miscellaneous](#)

Further information

Information on the packaging

<https://support.industry.siemens.com/cs/ww/en/view/109813875>

Information for data generation and storage

<https://support.industry.siemens.com/cs/ww/en/view/109995012>

Information- and Downloadcenter (Catalogs, Brochures,...)

<https://www.siemens.com/lowvoltage/catalogs>

Industry Mall (Online ordering system)

<https://mall.industry.siemens.com/mall/en/en/Catalog/product?mlfb=3VL9400-8BD00>

Service&Support (Manuals, Certificates, Characteristics, FAQs,...)

<https://support.industry.siemens.com/cs/ww/en/ps/3VL9400-8BD00>

Image database (product images, 2D dimension drawings, 3D models, device circuit diagrams, ...)

https://www.automation.siemens.com/bilddb/cax_en.aspx?mlfb=3VL9400-8BD00

CAX-Online-Generator

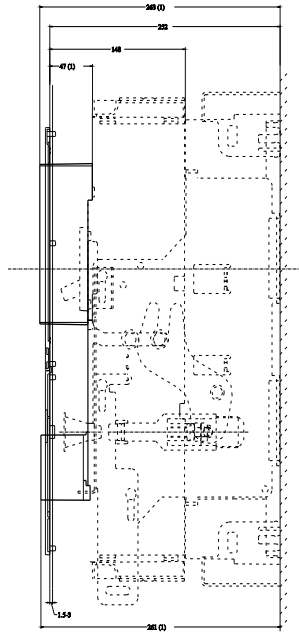
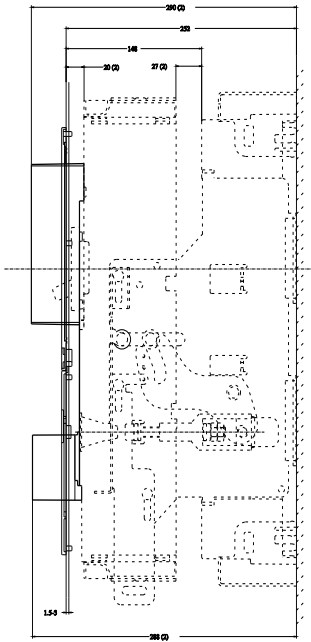
<https://www.siemens.com/cax>

Tender specifications

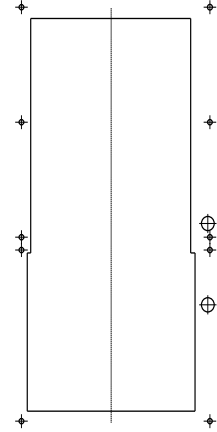
<https://www.siemens.com/specifications>

Characteristic curves

[https://curves.simaris.siemens.com/curves/<mmp_prod_noCOMP="HAUPT"></mmp_prod_no>](https://curves.simaris.siemens.com/curves/<mmp_prod_noCOMP=)



(1) Betriebsstellung
 (2) Trennstellung



last modified:

5/25/2025

