

accessory for VL400, rear connection, long, flat comprises 4 connections 2 long+2 short 4-pole spare part product only for replacement purposes



Model		
product brand name	SENTRON	
product designation	Rear connection	
design of the product	long, round/flat, 4 connections	
Accessories		
accessories	Accessory for VL400	
Mechanical Design		
Net Weight	1.783 kg	
Approvals Certificates		
Environment	General Product Approval	Test Certificates

[Environmental Con-  
firmations](#)

[Environmental Con-  
firmations](#)



[Confirmation](#)



[Special Test Certifi-  
cate](#)

other

[Confirmation](#)



[Miscellaneous](#)

### Further information

#### Information on the packaging

<https://support.industry.siemens.com/cs/ww/en/view/109813875>

#### Information for data generation and storage

<https://support.industry.siemens.com/cs/ww/en/view/109995012>

#### Information- and Downloadcenter (Catalogs, Brochures,...)

<https://www.siemens.com/lowvoltage/catalogs>

#### Industry Mall (Online ordering system)

<https://mall.industry.siemens.com/mall/en/en/Catalog/product?mlfb=3VL9400-4RN40>

#### Service&Support (Manuals, Certificates, Characteristics, FAQs,...)

<https://support.industry.siemens.com/cs/ww/en/ps/3VL9400-4RN40>

#### Image database (product images, 2D dimension drawings, 3D models, device circuit diagrams, ...)

[https://www.automation.siemens.com/bilddb/cax\\_en.aspx?mlfb=3VL9400-4RN40](https://www.automation.siemens.com/bilddb/cax_en.aspx?mlfb=3VL9400-4RN40)

#### CAx-Online-Generator

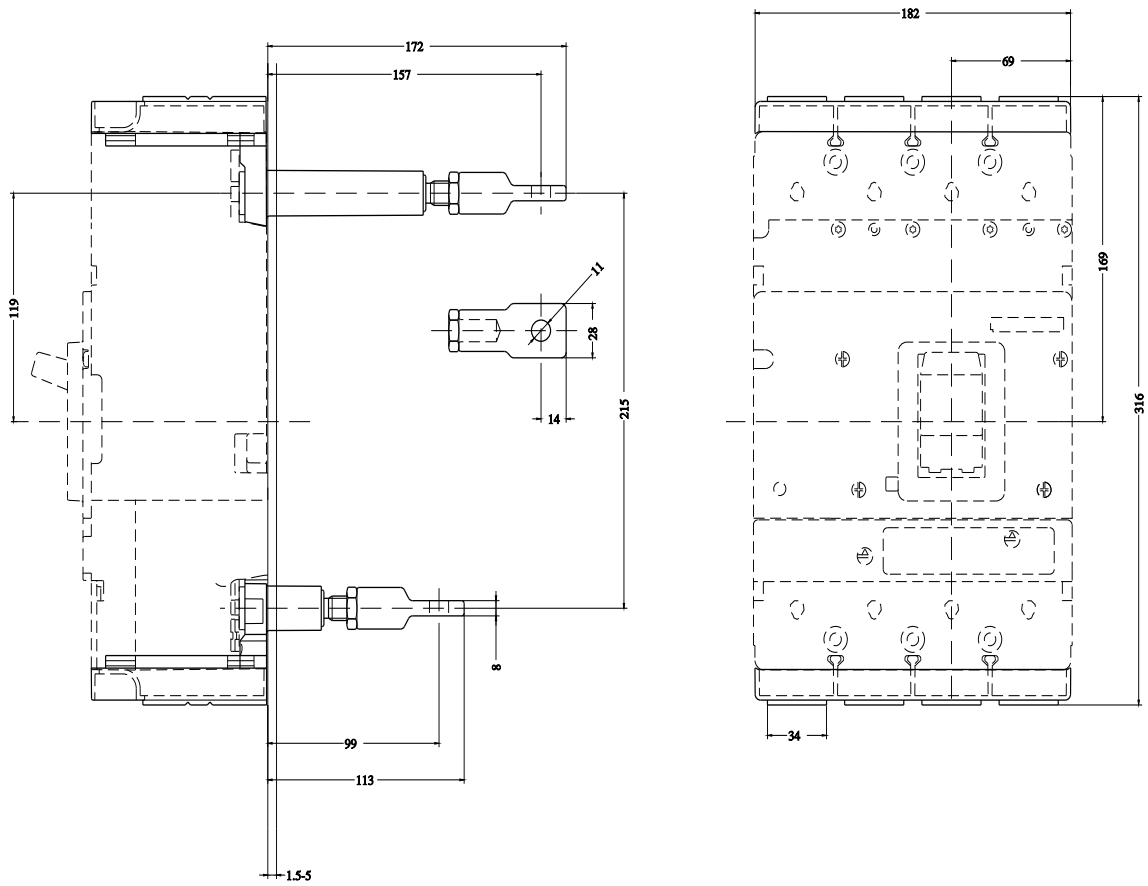
<https://www.siemens.com/cax>

#### Tender specifications

<https://www.siemens.com/specifications>

#### Characteristic curves

[https://curves.simaris.siemens.com/curves/<mmp\\_prod\\_noCOMP="HAUPT"></mmp\\_prod\\_no>](https://curves.simaris.siemens.com/curves/<mmp_prod_noCOMP=)



last modified:

5/25/2025 