

accessory for VL400, mot. op. mech. w/ strd en. mech 110...127V AC/DC spare part product only for replacement purposes

| Model  |  |
|--|--|
| product brand name   | SETRON   |
| product designation  | Motorized operating mechanism with stored energy mechanism   |
| design of the product  | Accessory for VL400  |
| type of the driving mechanism  | Motorized operating mechanism with spring energy store   |
| General technical data   |  |
| operating frequency maximum  | 120 1/h  |
| Voltage  |  |
| fuse protection type for external auxiliary power supply required  | NEOZED fuse (gL/gG): 2 A / miniature circuit breaker, C char.: 2 A   |
| operating range factor control supply voltage rated value  |  |
| <ul style="list-style-type: none"> <li>at DC initial value</li> <li>at DC full-scale value</li> <li>at AC at 50 Hz initial value</li> <li>at AC at 50 Hz full-scale value</li> <li>at AC at 60 Hz initial value</li> <li>at AC at 60 Hz full-scale value</li> </ul>                            | <ul style="list-style-type: none"> <li>0.85</li> <li>1.1</li> <li>0.85</li> <li>1.1</li> <li>0.85</li> <li>1.1</li> </ul>          |
| Protection class   |  |
| protection class IP  | IP30   |
| Control current  |  |
| operating apparent power   | 200 VA   |
| control supply voltage   |  |
| <ul style="list-style-type: none"> <li>at DC rated value minimum</li> <li>at DC rated value maximum</li> <li>at AC at 50 Hz rated value minimum</li> <li>at AC at 50 Hz rated value maximum</li> <li>at AC at 60 Hz rated value minimum</li> <li>at AC at 60 Hz rated value maximum</li> </ul> | <ul style="list-style-type: none"> <li>127 V</li> <li>110 V</li> <li>110 V</li> <li>127 V</li> <li>110 V</li> <li>127 V</li> </ul> |
| Accessories  |  |
| accessories  | Accessories for VL400  |
| pulse duration minimum   | 50 ms  |
| Connections  |  |
| stripped length  | 10 mm  |
| connectable conductor cross-section solid  |  |
| <ul style="list-style-type: none"> <li>minimum</li> <li>maximum</li> </ul>   | <ul style="list-style-type: none"> <li>0.75 mm<sup>2</sup></li> <li>1.5 mm<sup>2</sup></li> </ul>                                  |
| connectable conductor cross-section stranded   |  |
| <ul style="list-style-type: none"> <li>minimum</li> <li>maximum</li> </ul>   | <ul style="list-style-type: none"> <li>0.75 mm<sup>2</sup></li> <li>1.5 mm<sup>2</sup></li> </ul>                                  |
| connectable conductor cross-section finely stranded with   |  |

|                            |                      |
|----------------------------|----------------------|
| <b>core end processing</b> |                      |
| • minimum                  | 0.75 mm <sup>2</sup> |
| • maximum                  | 1.5 mm <sup>2</sup>  |
| <b>tightening torque</b>   |                      |
| • maximum                  | 1 N·m                |

### Mechanical Design

|                   |          |
|-------------------|----------|
| <b>height</b>     | 160 mm   |
| <b>width</b>      | 140 mm   |
| <b>depth</b>      | 160 mm   |
| <b>Net Weight</b> | 4.527 kg |


### Environmental conditions

|   |        |
|---|--------|
| <b>ambient temperature during operation</b> |        |
| • minimum                                   | -25 °C |
| • maximum                                   | 70 °C  |
| <b>ambient temperature during storage</b>   |        |
| • minimum                                   | -40 °C |
| • maximum                                   | 80 °C  |


### Certificates

|  |   |
|--|---|
| <b>reference code according to IEC 81346-2</b> | M |
|--|---|

### Approvals Certificates

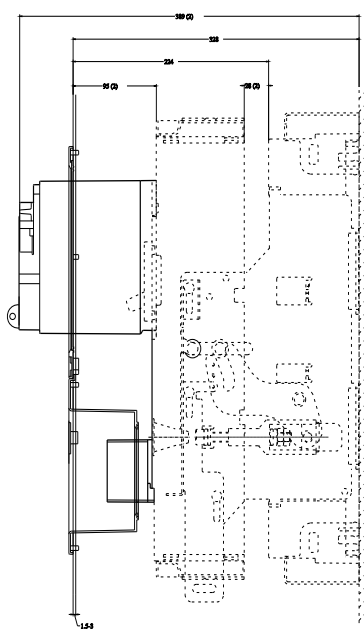
| Environment  | General Product Approval  | Test Certificates                        |
|--|---|--|
| <a href="#">Environmental Confirmations</a><br> | <a href="#">Confirmation</a><br> | <a href="#">Special Test Certificate</a> |

### other

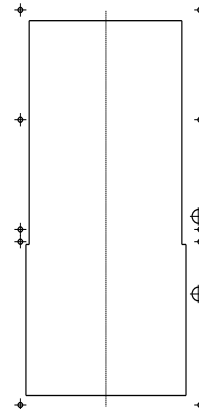
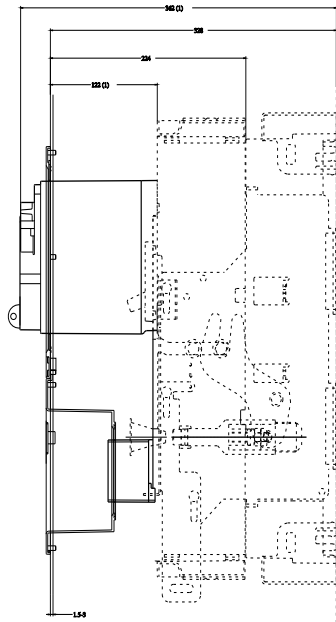
|   |                               |
|---|-------------------------------|
| <a href="#">Confirmation</a><br> | <a href="#">Miscellaneous</a> |
|---|-------------------------------|

### Further information

- Information on the packaging  
<https://support.industry.siemens.com/cs/ww/en/view/109813875>
- Information for data generation and storage  
<https://support.industry.siemens.com/cs/ww/en/view/109995012>
- Information- and Downloadcenter (Catalogs, Brochures,...)  
<https://www.siemens.com/lowvoltage/catalogs>
- Industry Mall (Online ordering system)  
<https://mall.industry.siemens.com/mall/en/en/Catalog/product?mlfb=3VL9400-3MN00>
- Service&Support (Manuals, Certificates, Characteristics, FAQs,...)  
<https://support.industry.siemens.com/cs/ww/en/ps/3VL9400-3MN00>
- Image database (product images, 2D dimension drawings, 3D models, device circuit diagrams, ...)  
[https://www.automation.siemens.com/bilddb/cax\\_en.aspx?mlfb=3VL9400-3MN00](https://www.automation.siemens.com/bilddb/cax_en.aspx?mlfb=3VL9400-3MN00)
- CAX-Online-Generator  
<https://www.siemens.com/cax>
- Tender specifications  
<https://www.siemens.com/specifications>
- Characteristic curves  
[https://curves.simaris.siemens.com/curves/<mmp\\_prod\\_noCOMP="HAUPT"></mmp\\_prod\\_no>](https://curves.simaris.siemens.com/curves/<mmp_prod_noCOMP=)



(1) Betriebsstellung  
(2) Trennstellung



last modified:

6/15/2025

