

accessory for VL400, mot. op. mech. w/ strd en. mech 42...48V AC/DC spare part product only for replacement purposes

Model	
product brand name	SETRON
product designation	Motorized operating mechanism with stored energy mechanism
design of the product	Accessory for VL400
type of the driving mechanism	Motorized operating mechanism with spring energy store
General technical data	
operating frequency maximum	120 1/h
Voltage	
fuse protection type for external auxiliary power supply required	NEOZED fuse (gL/gG): 4 A / miniature circuit breaker, C char.: 4 A
operating range factor control supply voltage rated value	
<ul style="list-style-type: none"> <li>at DC initial value</li> <li>at DC full-scale value</li> <li>at AC at 50 Hz initial value</li> <li>at AC at 50 Hz full-scale value</li> <li>at AC at 60 Hz initial value</li> <li>at AC at 60 Hz full-scale value</li> </ul>	<ul style="list-style-type: none"> <li>0.85</li> <li>1.1</li> <li>0.85</li> <li>1.1</li> <li>0.85</li> <li>1.1</li> </ul>
Protection class	
protection class IP	IP30
Control current	
operating apparent power	200 VA
control supply voltage	
<ul style="list-style-type: none"> <li>at DC rated value minimum</li> <li>at DC rated value maximum</li> <li>at AC at 50 Hz rated value minimum</li> <li>at AC at 50 Hz rated value maximum</li> <li>at AC at 60 Hz rated value minimum</li> <li>at AC at 60 Hz rated value maximum</li> </ul>	<ul style="list-style-type: none"> <li>48 V</li> <li>42 V</li> <li>42 V</li> <li>48 V</li> <li>42 V</li> <li>48 V</li> </ul>
Accessories	
accessories	Accessories for VL400
pulse duration minimum	50 ms
Connections	
stripped length	10 mm
connectable conductor cross-section solid	
<ul style="list-style-type: none"> <li>minimum</li> <li>maximum</li> </ul>	<ul style="list-style-type: none"> <li>0.75 mm<sup>2</sup></li> <li>1.5 mm<sup>2</sup></li> </ul>
connectable conductor cross-section stranded	
<ul style="list-style-type: none"> <li>minimum</li> <li>maximum</li> </ul>	<ul style="list-style-type: none"> <li>0.75 mm<sup>2</sup></li> <li>1.5 mm<sup>2</sup></li> </ul>
connectable conductor cross-section finely stranded with	

<b>core end processing</b>	
• minimum	0.75 mm <sup>2</sup>
• maximum	1.5 mm <sup>2</sup>
<b>tightening torque</b>	
• maximum	1 N·m

### Mechanical Design

<b>height</b>	160 mm
<b>width</b>	140 mm
<b>depth</b>	160 mm
<b>Net Weight</b>	4.613 kg


### Environmental conditions

<b>ambient temperature during operation</b>	
• minimum	-25 °C
• maximum	70 °C
<b>ambient temperature during storage</b>	
• minimum	-40 °C
• maximum	80 °C


### Certificates

<b>reference code according to IEC 81346-2</b>	M
--	---

### Approvals Certificates

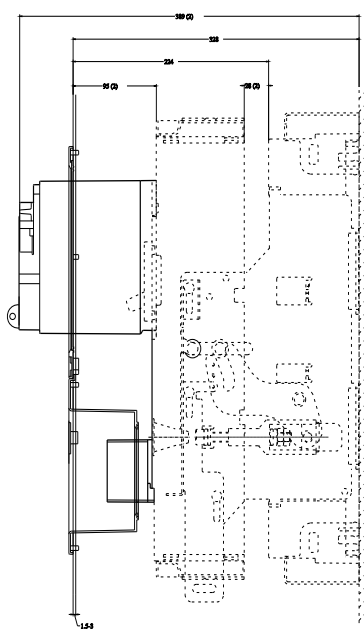
Environment	General Product Approval	Test Certificates
<a href="#">Environmental Confirmations</a> 	<a href="#">Confirmation</a> 	<a href="#">Special Test Certificate</a>

### other

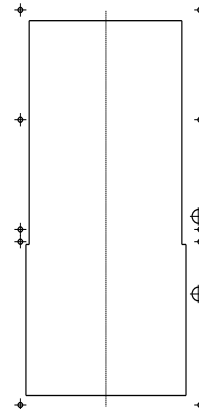
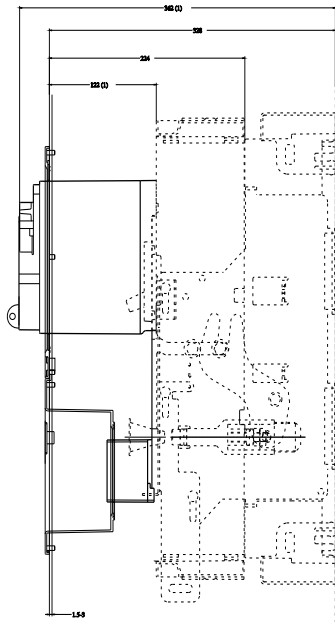
<a href="#">Confirmation</a> 	<a href="#">Miscellaneous</a>
---	-------------------------------

### Further information

- Information on the packaging  
<https://support.industry.siemens.com/cs/ww/en/view/109813875>
- Information for data generation and storage  
<https://support.industry.siemens.com/cs/ww/en/view/109995012>
- Information- and Downloadcenter (Catalogs, Brochures,...)  
<https://www.siemens.com/lowvoltage/catalogs>
- Industry Mall (Online ordering system)  
<https://mall.industry.siemens.com/mall/en/en/Catalog/product?mlfb=3VL9400-3ML00>
- Service&Support (Manuals, Certificates, Characteristics, FAQs,...)  
<https://support.industry.siemens.com/cs/ww/en/ps/3VL9400-3ML00>
- Image database (product images, 2D dimension drawings, 3D models, device circuit diagrams, ...)  
[https://www.automation.siemens.com/bilddb/cax\\_en.aspx?mlfb=3VL9400-3ML00](https://www.automation.siemens.com/bilddb/cax_en.aspx?mlfb=3VL9400-3ML00)
- CAX-Online-Generator  
<https://www.siemens.com/cax>
- Tender specifications  
<https://www.siemens.com/specifications>
- Characteristic curves  
[https://curves.simaris.siemens.com/curves/<mmp\\_prod\\_noCOMP="HAUPT"></mmp\\_prod\\_no>](https://curves.simaris.siemens.com/curves/<mmp_prod_noCOMP=)



(1) Betriebsstellung  
(2) Trennstellung



last modified:

6/15/2025 

