

accessory for VL400, mot. op. mech. w/ strd en. mech 24 VDC spare part product only for replacement purposes

Model	
product brand name	SETRON
product designation	Motorized operating mechanism with stored energy mechanism
design of the product	Accessory for VL400
type of the driving mechanism	Motorized operating mechanism with spring energy store
General technical data	
operating frequency maximum	120 1/h
Voltage	
fuse protection type for external auxiliary power supply required	NEOZED fuse (gL/gG): 6 A / miniature circuit breaker, C char.: 6 A
operating range factor control supply voltage rated value	
<ul style="list-style-type: none"> at DC initial value at DC full-scale value at AC at 50 Hz initial value at AC at 50 Hz full-scale value at AC at 60 Hz initial value at AC at 60 Hz full-scale value 	0.85 1.1 0.85 1.1 0.85 1.1
Protection class	
protection class IP	IP30
Control current	
operating apparent power	200 VA
control supply voltage	
<ul style="list-style-type: none"> at DC rated value minimum at DC rated value maximum 	24 V 24 V
Accessories	
accessories	Accessories for VL400
pulse duration minimum	50 ms
Connections	
stripped length	10 mm
connectable conductor cross-section solid	
<ul style="list-style-type: none"> minimum maximum 	0.75 mm ² 1.5 mm ²
connectable conductor cross-section stranded	
<ul style="list-style-type: none"> minimum maximum 	0.75 mm ² 1.5 mm ²
connectable conductor cross-section finely stranded with core end processing	
<ul style="list-style-type: none"> minimum maximum 	0.75 mm ² 1.5 mm ²
tightening torque	

- maximum

1 N·m

Mechanical Design

height	160 mm
width	140 mm
depth	160 mm
Net Weight	4.545 kg

Environmental conditions

ambient temperature during operation	
• minimum	-25 °C
• maximum	70 °C
ambient temperature during storage	
• minimum	-40 °C
• maximum	80 °C

Certificates

reference code according to IEC 81346-2	M
---	---

Approvals Certificates

Environment	General Product Approval	Test Certificates
-------------	--------------------------	-------------------

[Environmental Con-
firmations](#)

[Environmental Con-
firmations](#)



[Confirmation](#)



[Special Test Certific-
ate](#)

other

[Confirmation](#)



[Miscellaneous](#)

Further information

Information on the packaging

<https://support.industry.siemens.com/cs/ww/en/view/109813875>

Information for data generation and storage

<https://support.industry.siemens.com/cs/ww/en/view/109995012>

Information- and Downloadcenter (Catalogs, Brochures,...)

<https://www.siemens.com/lowvoltage/catalogs>

Industry Mall (Online ordering system)

<https://mall.industry.siemens.com/mall/en/en/Catalog/product?mlfb=3VL9400-3MJ00>

Service&Support (Manuals, Certificates, Characteristics, FAQs,...)

<https://support.industry.siemens.com/cs/ww/en/ps/3VL9400-3MJ00>

Image database (product images, 2D dimension drawings, 3D models, device circuit diagrams, ...)

https://www.automation.siemens.com/bilddb/cax_en.aspx?mlfb=3VL9400-3MJ00

CAX-Online-Generator

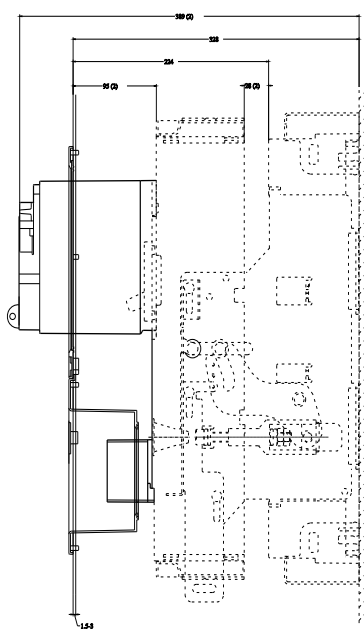
<https://www.siemens.com/cax>

Tender specifications

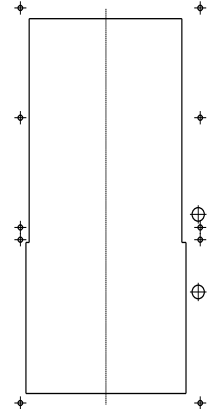
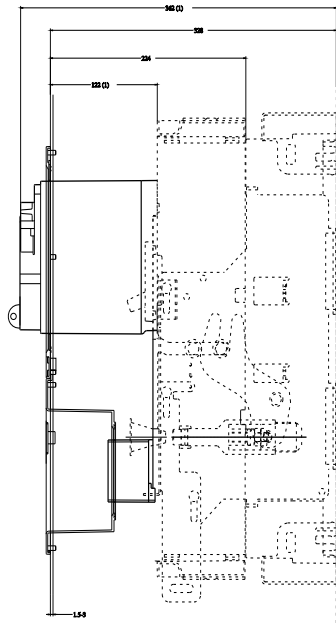
<https://www.siemens.com/specifications>

Characteristic curves

[https://curves.simaris.siemens.com/curves/<mmp_prod_noCOMP="HAUPT"></mmp_prod_no>](https://curves.simaris.siemens.com/curves/<mmp_prod_noCOMP=)



(1) Betriebsstellung
(2) Trennstellung



last modified:

6/15/2025

