



SIRIUS soft starter 200-690 V 470 A, 110-250 V AC spring-type terminals

<b>product brand name</b>	SIRIUS
<b>product category</b>	Hybrid switching devices
<b>product designation</b>	Soft starter
<b>product type designation</b>	3RW55
<b>manufacturer's article number</b>	<ul style="list-style-type: none"> <li>• of high feature HMI module usable <a href="#">3RW5980-0HF00</a></li> <li>• of communication module PROFINET standard usable <a href="#">3RW5980-0CS00</a></li> <li>• of communication module PROFINET high-feature usable <a href="#">3RW5950-0CH00</a></li> <li>• of communication module PROFIBUS usable <a href="#">3RW5980-0CP00</a></li> <li>• of communication module Modbus TCP usable <a href="#">3RW5980-0CT00</a></li> <li>• of communication module Modbus RTU usable <a href="#">3RW5980-0CR00</a></li> <li>• of communication module Ethernet/IP <a href="#">3RW5980-0CE00</a></li> <li>• of circuit breaker usable at 400 V <a href="#">3VA2450-7MN32-0AA0; Type of coordination 1, Iq = 65 kA, CLASS 10</a></li> <li>• of circuit breaker usable at 500 V <a href="#">3VA2450-7MN32-0AA0; Type of coordination 1, Iq = 65 kA, CLASS 10</a></li> <li>• of circuit breaker usable at 400 V at inside-delta circuit <a href="#">3VA2510-6HN32-0AA0; Type of coordination 1, Iq = 65 kA, CLASS 10</a></li> <li>• of circuit breaker usable at 500 V at inside-delta circuit <a href="#">3VA2510-6HN32-0AA0; Type of coordination 1, Iq = 65 kA, CLASS 10</a></li> <li>• of the gG fuse usable up to 690 V 2x3NA3365-6; Type of coordination 1, Iq = 65 kA</li> <li>• of the gG fuse usable at inside-delta circuit up to 500 V 2x3NA3365-6; Type of coordination 1, Iq = 65 kA</li> <li>• of full range R fuse link for semiconductor protection usable up to 690 V <a href="#">3NE1436-2; Type of coordination 2, Iq = 65 kA</a></li> <li>• of back-up R fuse link for semiconductor protection usable up to 690 V <a href="#">3NE3340-8; Type of coordination 2, Iq = 65 kA</a></li> </ul>

General technical data	
<b>starting voltage [%]</b>	20 ... 100 %
<b>stopping voltage [%]</b>	50 %; non-adjustable
<b>start-up ramp time of soft starter</b>	0 ... 360 s
<b>ramp-down time of soft starter</b>	0 ... 360 s
<b>start torque [%]</b>	10 ... 100 %
<b>stopping torque [%]</b>	10 ... 100 %
<b>torque limitation [%]</b>	20 ... 200 %
<b>current limiting value [%] adjustable</b>	125 ... 800 %
<b>breakaway voltage [%] adjustable</b>	40 ... 100 %
<b>breakaway time adjustable</b>	0 ... 2 s
<b>number of parameter sets</b>	3
<b>accuracy class</b>	5 (based on IEC 61557-12)
<b>certificate of suitability</b>	
• CE marking	Yes

<ul style="list-style-type: none"> <li>• UL approval</li> </ul>	Yes
<ul style="list-style-type: none"> <li>• CSA approval</li> </ul>	Yes
<b>product component</b>	
<ul style="list-style-type: none"> <li>• HMI-High Feature</li> </ul>	Yes
<ul style="list-style-type: none"> <li>• is supported HMI-High Feature</li> </ul>	Yes
<b>product feature integrated bypass contact system</b>	Yes
<b>number of controlled phases</b>	3
<b>current unbalance limiting value [%]</b>	10 ... 60 %
<b>ground-fault monitoring limiting value [%]</b>	10 ... 95 %
<b>buffering time in the event of power failure</b>	
<ul style="list-style-type: none"> <li>• for main current circuit</li> </ul>	100 ms
<ul style="list-style-type: none"> <li>• for control circuit</li> </ul>	100 ms
<b>idle time adjustable</b>	0 ... 255 s
<b>insulation voltage rated value</b>	690 V
<b>degree of pollution</b>	3, acc. to IEC 60947-4-2
<b>impulse voltage rated value</b>	8 kV
<b>blocking voltage of the thyristor maximum</b>	1 800 V
<b>service factor</b>	1.15
<b>surge voltage resistance rated value</b>	8 kV
<b>maximum permissible voltage for protective separation</b>	
<ul style="list-style-type: none"> <li>• between main and auxiliary circuit</li> </ul>	690 V; does not apply for thermistor connection
<b>shock resistance</b>	15 g / 11 ms, from 6 g / 11 ms with potential contact lifting
<b>vibration resistance</b>	15 mm up to 6 Hz; 2 g up to 500 Hz
<b>recovery time after overload trip adjustable</b>	60 ... 1 800 s
utilization category according to IEC 60947-4-2	AC 53a
<b>reference code according to IEC 81346-2</b>	Q
<b>Substance Prohibitance (day/month/year)</b>	02/15/2018
<b>SVHC substance name</b>	Lead CAS-No. 7439-92-1 Lead monoxide (lead oxide) CAS-No. 1317-36-8 2-methyl-1-(4-methylthiophenyl)-2-morpholinopropan-1-one CAS-No. 71868-10-5 Melamine CAS-No. 108-78-1 6,6'-di-tert-butyl-2,2'-methylenedi-p-cresol CAS-No. 119-47-1 Dibutylbis(pentane-2,4-dionato-O,O')tin CAS-No. 22673-19-4 Lead titanium trioxide CAS-No. 12060-00-3
<b>Net Weight</b>	13.77 kg
<b>product function</b>	
<ul style="list-style-type: none"> <li>• ramp-up (soft starting)</li> </ul>	Yes
<ul style="list-style-type: none"> <li>• soft stopping</li> </ul>	Yes
<ul style="list-style-type: none"> <li>• breakaway pulse</li> </ul>	Yes
<ul style="list-style-type: none"> <li>• adjustable current limitation</li> </ul>	Yes
<ul style="list-style-type: none"> <li>• creep speed in both directions of rotation</li> </ul>	Yes
<ul style="list-style-type: none"> <li>• pump stop</li> </ul>	Yes
<ul style="list-style-type: none"> <li>• DC braking</li> </ul>	Yes
<ul style="list-style-type: none"> <li>• motor heating</li> </ul>	Yes
<ul style="list-style-type: none"> <li>• min/max pointer</li> </ul>	Yes
<ul style="list-style-type: none"> <li>• trace function</li> </ul>	Yes
<ul style="list-style-type: none"> <li>• intrinsic device protection</li> </ul>	Yes
<ul style="list-style-type: none"> <li>• motor overload protection</li> </ul>	Yes; Full motor protection (thermistor motor protection and electronic motor overload protection)
<ul style="list-style-type: none"> <li>• evaluation of thermistor motor protection</li> </ul>	Yes; Type A PTC or Klixon / Thermoclick
<ul style="list-style-type: none"> <li>• inside-delta circuit</li> </ul>	Yes; Only up to 600 V operating voltage
<ul style="list-style-type: none"> <li>• auto-RESET</li> </ul>	Yes
<ul style="list-style-type: none"> <li>• manual RESET</li> </ul>	Yes
<ul style="list-style-type: none"> <li>• remote reset</li> </ul>	Yes
<ul style="list-style-type: none"> <li>• communication function</li> </ul>	Yes
<ul style="list-style-type: none"> <li>• operating measured value display</li> </ul>	Yes
<ul style="list-style-type: none"> <li>• event list</li> </ul>	Yes
<ul style="list-style-type: none"> <li>• error logbook</li> </ul>	Yes
<ul style="list-style-type: none"> <li>• via software parameterizable</li> </ul>	Yes
<ul style="list-style-type: none"> <li>• via software configurable</li> </ul>	Yes

• screw terminal	No
• spring-loaded terminal	Yes
• <b>PROFInergy</b>	Yes; in connection with the PROFINET Standard and PROFINET High-Feature communication modules
• <b>firmware update</b>	Yes
• <b>removable terminal for control circuit</b>	Yes
• voltage ramp	Yes
• torque control	Yes
• combined braking	Yes
• analog output	Yes; 4 ... 20 mA (default) / 0 ... 10 V
• programmable control inputs/outputs	Yes
• condition monitoring	Yes
• automatic parameterisation	Yes
• application wizards	Yes
• alternative stopping mode	Yes
• emergency operation mode	Yes
• reversing operation	Yes
• soft starting at heavy starting conditions	Yes

### Power Electronics

<b>operational current</b>	
• at 40 °C rated value	470 A
• at 40 °C rated value minimum	94 A
• at 50 °C rated value	416 A
• at 60 °C rated value	380 A
<b>operational current at inside-delta circuit</b>	
• at 40 °C rated value	814 A
• at 50 °C rated value	721 A
• at 60 °C rated value	658 A
<b>operating voltage</b>	
• rated value	200 ... 690 V
• at inside-delta circuit rated value	200 ... 600 V
<b>relative negative tolerance of the operating voltage</b>	-15 %
<b>relative positive tolerance of the operating voltage</b>	10 %
<b>relative negative tolerance of the operating voltage at inside-delta circuit</b>	-15 %
<b>relative positive tolerance of the operating voltage at inside-delta circuit</b>	10 %
<b>operating power for 3-phase motors</b>	
• at 230 V at 40 °C rated value	132 kW
• at 230 V at inside-delta circuit at 40 °C rated value	250 kW
• at 400 V at 40 °C rated value	250 kW
• at 400 V at inside-delta circuit at 40 °C rated value	400 kW
• at 500 V at 40 °C rated value	315 kW
• at 500 V at inside-delta circuit at 40 °C rated value	500 kW
• at 690 V at 40 °C rated value	400 kW
<b>Operating frequency 1 rated value</b>	50 Hz
<b>Operating frequency 2 rated value</b>	60 Hz
<b>relative negative tolerance of the operating frequency</b>	-10 %
<b>relative positive tolerance of the operating frequency</b>	10 %
<b>minimum load [%]</b>	10 %; Relative to set le
<b>power loss [W] for rated value of the current at AC</b>	
• at 40 °C after startup	141 W
• at 50 °C after startup	125 W
• at 60 °C after startup	114 W
<b>power loss [W] at AC at current limitation 350 %</b>	
• at 40 °C during startup	7 651 W
• at 50 °C during startup	6 400 W
• at 60 °C during startup	5 620 W
<b>type of the motor protection</b>	Electronic, tripping in the event of thermal overload of the motor

### Control circuit/ Control

<b>type of voltage of the control supply voltage</b>	AC
<b>control supply voltage at AC</b>	
• at 50 Hz	110 ... 250 V
• at 60 Hz	110 ... 250 V
<b>relative negative tolerance of the control supply voltage at AC at 50 Hz</b>	-15 %
<b>relative positive tolerance of the control supply voltage at AC at 50 Hz</b>	10 %
<b>relative negative tolerance of the control supply voltage at AC at 60 Hz</b>	-15 %
<b>relative positive tolerance of the control supply voltage at AC at 60 Hz</b>	10 %
<b>control supply voltage frequency</b>	50 ... 60 Hz
<b>relative negative tolerance of the control supply voltage frequency</b>	-10 %
<b>relative positive tolerance of the control supply voltage frequency</b>	10 %
<b>control supply current in standby mode rated value</b>	100 mA
<b>holding current in bypass operation rated value</b>	150 mA
<b>inrush current by closing the bypass contacts maximum</b>	0.87 A
inrush current peak at application of control supply voltage maximum	43 A
duration of inrush current peak at application of control supply voltage	1.6 ms
<b>design of the overvoltage protection</b>	Varistor
<b>design of short-circuit protection for control circuit</b>	4 A gG fuse (I <sub>cu</sub> =1 kA), 6 A quick-acting fuse (I <sub>cu</sub> =1 kA), C1 miniature circuit breaker (I <sub>cu</sub> = 600 A), C6 miniature circuit breaker (I <sub>cu</sub> = 300 A); Is not part of scope of supply

#### Inputs/ Outputs

<b>number of digital inputs</b>	4
• parameterizable	4
• <b>number of digital outputs</b>	4
• number of digital outputs parameterizable	3
• number of digital outputs not parameterizable	1
<b>digital output version</b>	3 normally-open contacts (NO) / 1 changeover contact (CO)
<b>number of analog outputs</b>	1
<b>switching capacity current of the relay outputs</b>	
• at AC-15 at 250 V rated value	3 A
• at DC-13 at 24 V rated value	1 A

#### Installation/ mounting/ dimensions

<b>mounting position</b>	Vertical (can be rotated +/- 90° and tilted forward or backward +/- 22.5°)
<b>fastening method</b>	screw fixing
<b>height</b>	393 mm
<b>width</b>	210 mm
<b>depth</b>	203 mm
required spacing with side-by-side mounting	
• forwards	10 mm
• backwards	0 mm
• upwards	100 mm
• downwards	75 mm
• at the side	5 mm
<b>weight without packaging</b>	10.9 kg

#### Connections/ Terminals

<b>type of electrical connection</b>	
• for main current circuit	busbar connection
• for control circuit	spring-loaded terminals
<b>width of connection bar maximum</b>	45 mm
<b>wire length for thermistor connection</b>	
• with conductor cross-section = 0.5 mm <sup>2</sup> maximum	50 m
• with conductor cross-section = 1.5 mm <sup>2</sup> maximum	150 m
• with conductor cross-section = 2.5 mm <sup>2</sup> maximum	250 m

<b>type of connectable conductor cross-sections</b>	
<ul style="list-style-type: none"> <li>• for DIN cable lug for main contacts stranded</li> <li>• for DIN cable lug for main contacts finely stranded</li> </ul>	<p>2x (50 ... 240 mm<sup>2</sup>)</p> <p>2x (70 ... 240 mm<sup>2</sup>)</p>
<b>type of connectable conductor cross-sections</b>	
<ul style="list-style-type: none"> <li>• for control circuit solid</li> <li>• for control circuit finely stranded with core end processing</li> <li>• for AWG cables for control circuit solid</li> <li>• for AWG cables for control circuit finely stranded with core end processing</li> </ul>	<p>2x (0.25 ... 1.5 mm<sup>2</sup>)</p> <p>2x (0.25 ... 1.5 mm<sup>2</sup>)</p> <p>2x (24 ... 16)</p> <p>2x (24 ... 16)</p>
<b>wire length</b>	
<ul style="list-style-type: none"> <li>• between soft starter and motor maximum</li> <li>• at the digital inputs at DC maximum</li> </ul>	<p>800 m</p> <p>1 000 m</p>
<b>tightening torque</b>	
<ul style="list-style-type: none"> <li>• for main contacts with screw-type terminals</li> <li>• for auxiliary and control contacts with screw-type terminals</li> </ul>	<p>14 ... 24 N·m</p> <p>0.8 ... 1.2 N·m</p>
<b>tightening torque [lbf·in]</b>	
<ul style="list-style-type: none"> <li>• for main contacts with screw-type terminals</li> <li>• for auxiliary and control contacts with screw-type terminals</li> </ul>	<p>124 ... 210 lbf·in</p> <p>7 ... 10.3 lbf·in</p>
<b>Ambient conditions</b>	
installation altitude at height above sea level maximum	2 000 m
<b>ambient temperature</b>	
<ul style="list-style-type: none"> <li>• during operation</li> <li>• during storage and transport</li> </ul>	<p>-25 ... +60 °C; Please observe derating at temperatures of 40 °C or above</p> <p>-40 ... +80 °C</p>
<b>environmental category</b>	
<ul style="list-style-type: none"> <li>• during operation according to IEC 60721</li> <li>• during storage according to IEC 60721</li> <li>• during transport according to IEC 60721</li> </ul>	<p>3K6 (no ice formation, only occasional condensation), 3C3 (no salt mist), 3S2 (sand must not get into the devices), 3M6</p> <p>1K6 (only occasional condensation), 1C2 (no salt mist), 1S2 (sand must not get inside the devices), 1M4</p> <p>2K2, 2C1, 2S1, 2M2 (max. fall height 0.3 m)</p>
<b>Electromagnetic compatibility</b>	
<b>EMC emitted interference</b>	acc. to IEC 60947-4-2: Class A
<b>Communication/ Protocol</b>	
<b>communication module is supported</b>	
<ul style="list-style-type: none"> <li>• PROFINET standard</li> <li>• PROFINET high-feature</li> <li>• EtherNet/IP</li> <li>• Modbus RTU</li> <li>• Modbus TCP</li> <li>• PROFIBUS</li> </ul>	<p>Yes</p> <p>Yes</p> <p>Yes</p> <p>Yes</p> <p>Yes</p> <p>Yes</p>
<b>UL/CSA ratings</b>	
<b>manufacturer's article number</b>	
<ul style="list-style-type: none"> <li>• of the fuse <ul style="list-style-type: none"> <li>— usable for Standard Faults up to 575/600 V according to UL</li> <li>— usable for High Faults up to 575/600 V according to UL</li> <li>— usable for Standard Faults at inside-delta circuit up to 575/600 V according to UL</li> <li>— usable for High Faults at inside-delta circuit up to 575/600 V according to UL</li> </ul> </li> </ul>	<p>Type: Class J / L, max. 1600 A; Iq = 30 kA</p> <p>Type: Class J / L, max. 1200 A; Iq = 100 kA</p> <p>Type: Class J / L, max. 1600 A; Iq = 30 kA</p> <p>Type: Class J / L, max. 1200 A; Iq = 100 kA</p>
<b>operating power [hp] for 3-phase motors</b>	
<ul style="list-style-type: none"> <li>• at 200/208 V at 50 °C rated value</li> <li>• at 220/230 V at 50 °C rated value</li> <li>• at 460/480 V at 50 °C rated value</li> <li>• at 575/600 V at 50 °C rated value</li> <li>• at 200/208 V at inside-delta circuit at 50 °C rated value</li> <li>• at 220/230 V at inside-delta circuit at 50 °C rated value</li> <li>• at 460/480 V at inside-delta circuit at 50 °C rated value</li> <li>• at 575/600 V at inside-delta circuit at 50 °C rated value</li> </ul>	<p>150 hp</p> <p>150 hp</p> <p>350 hp</p> <p>450 hp</p> <p>250 hp</p> <p>250 hp</p> <p>600 hp</p> <p>800 hp</p>

contact rating of auxiliary contacts according to UL	R300-B300
Electrical Safety	
protection class IP on the front according to IEC 60529	IP00; IP20 with cover
touch protection on the front according to IEC 60529	finger-safe, for vertical contact from the front with cover

### ATEX

Safety Integrity Level (SIL) according to IEC 61508 relating to ATEX	SIL 1
PFHD with high demand rate according to IEC 61508 relating to ATEX	5E-7 1/h
PFDAvg with low demand rate according to IEC 61508 relating to ATEX	0.008
hardware fault tolerance according to IEC 61508 relating to ATEX	0
T1 value for proof test interval or service life according to IEC 61508 relating to ATEX	3 a
certificate of suitability <ul style="list-style-type: none"> <li>• ATEX</li> <li>• IECEx</li> <li>• according to ATEX directive 2014/34/EU</li> </ul>	Yes Yes BVS 18 ATEX F 003 X
type of protection according to ATEX directive 2014/34/EU	II (2)G [Ex eb Gb] [Ex db Gb] [Ex pxb Gb], II (2)D [Ex tb Db] [Ex pxb Db], I (M2) [Ex db Mb]

### Approvals Certificates

Environmental Product Declaration	
<ul style="list-style-type: none"> <li>• global warming potential [CO2 eq] / during manufacturing</li> <li>• global warming potential [CO2 eq] / during sales</li> <li>• global warming potential [CO2 eq] / during operation</li> <li>• global warming potential [CO2 eq] / after end of life</li> <li>• global warming potential [CO2 eq] / total</li> </ul>	95.3 kg 2.8 kg 756 kg -21 kg 833 kg

Environment	General Product Approval
-------------	--------------------------

[Environmental Confirmations](#)



General Product Approval	EMV	For use in hazardous locations
--------------------------	-----	--------------------------------



Test Certificates	Maritime application
-------------------	----------------------

[Type Test Certificates/Test Report](#)



### other

[Confirmation](#)

[Confirmation](#)



### Further information

Information on the packaging  
<https://support.industry.siemens.com/cs/ww/en/view/109813875>  
 Information for data generation and storage  
<https://support.industry.siemens.com/cs/ww/en/view/109995012>  
 Information- and Downloadcenter (Catalogs, Brochures,...)

<https://www.siemens.com/ic10>

Industry Mall (Online ordering system)

<https://mall.industry.siemens.com/mall/en/en/Catalog/product?mlfb=3RW5547-2HA16>

Service&Support (Manuals, Certificates, Characteristics, FAQs,...)

<https://support.industry.siemens.com/cs/ww/en/ps/3RW5547-2HA16>

Image database (product images, 2D dimension drawings, 3D models, device circuit diagrams, EPLAN macros, ...)

[https://www.automation.siemens.com/bilddb/cax\\_de.aspx?mlfb=3RW5547-2HA16&lang=en](https://www.automation.siemens.com/bilddb/cax_de.aspx?mlfb=3RW5547-2HA16&lang=en)

Cax online generator

<https://support.automation.siemens.com/WW/CAXorder/default.aspx?lang=en&mlfb=3RW5547-2HA16>

Characteristic curves

[https://curves.simaris.siemens.com/curves/<mmp\\_prod\\_noCOMP="HAUPT"></mmp\\_prod\\_no>](https://curves.simaris.siemens.com/curves/<mmp_prod_noCOMP=)

Characteristic: Tripping characteristics, I<sup>2</sup>t, Let-through current

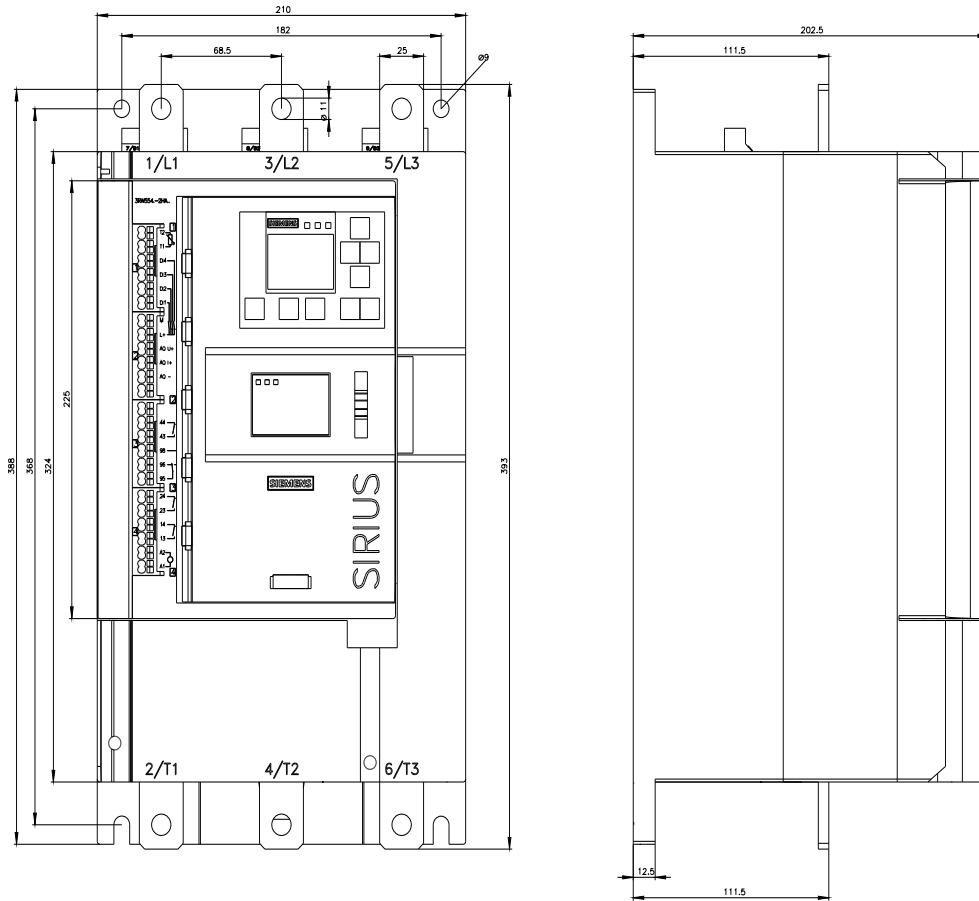
<https://support.industry.siemens.com/cs/ww/en/ps/3RW5547-2HA16/char>

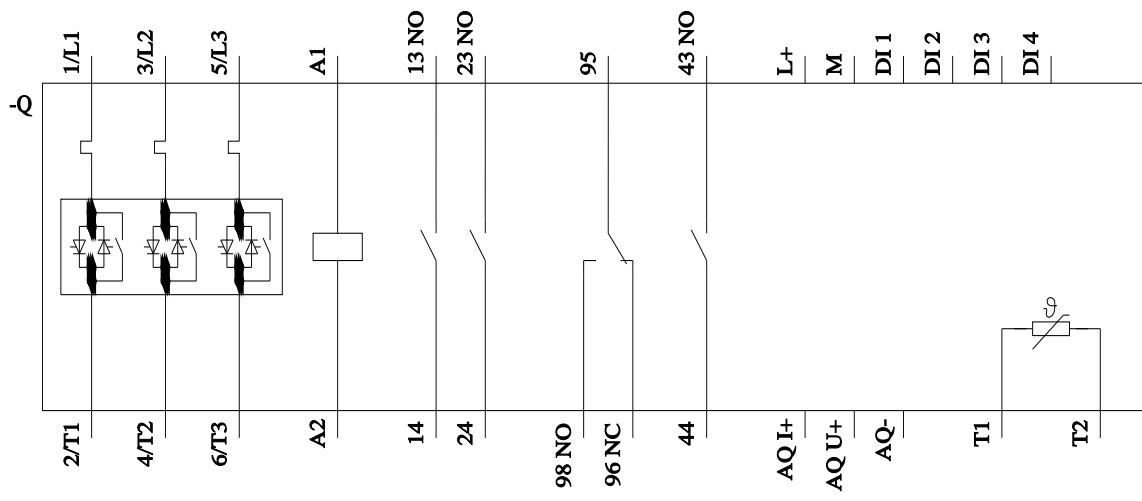
Characteristic: Installation altitude

[https://www.automation.siemens.com/bilddb/index.aspx?gridview=view2&objkey=G\\_NSB0\\_XX\\_01704&showdetail=true&view=Search](https://www.automation.siemens.com/bilddb/index.aspx?gridview=view2&objkey=G_NSB0_XX_01704&showdetail=true&view=Search)

Simulation Tool for Soft Starters (STS)

<https://support.industry.siemens.com/cs/ww/en/view/101494917>





last modified:

9/5/2025

