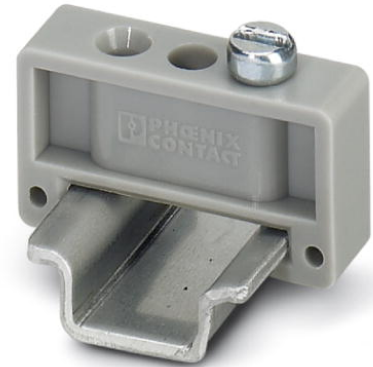



E/MK

Order No.: 1421633

<http://catalog.phoenixcontact.net/phoenix/treeViewClick.do?UID=1421633>

End clamp, width: 6.2 mm, color: gray

Commercial data

EAN	 4 017918 021559
sales group	B220
Pack	100 Pcs.
Customs tariff	39269097
Gross weight in pieces	0.001422 KG
Net weight per piece	0.001422 KG
Catalog page information	Page 442 (CL-2005)

Product notesWEEE/RoHS-compliant since:
09/01/2005

<http://www.download.phoenixcontact.com>
Please note that the data given here has been taken from the online catalog. For comprehensive information and data, please refer to the user documentation. The General Terms and Conditions of Use apply to Internet downloads.

Technical data**Dimensions**

Height	11.4 mm
Length	22 mm
Width	6 mm

General

Material	PA
Coating	3.2 mm fixing hole

Color	gray
-------	------

Certificates / Approvals

Certification

Certifications applied for:

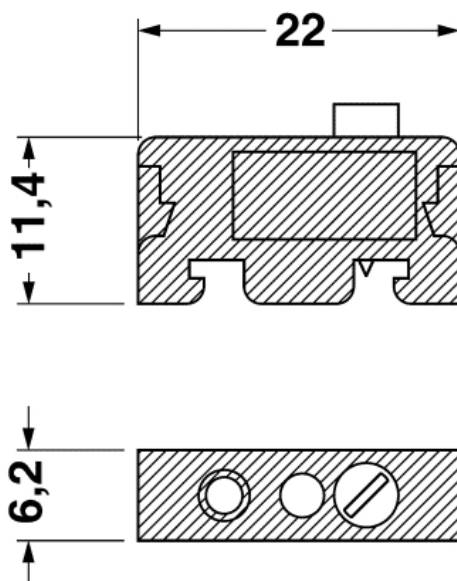
Certification Ex:

Accessories

Item	Designation	Description
Assembly		
1401763	NS 15 AL PERF 2000MM	DIN rail, material: Aluminum, perforated, height 5.5 mm, width 15 mm, length: 2 m
1401682	NS 15 PERF 2000MM	DIN rail, material: steel galvanized and passivated with a thick layer, perforated, height 5.5 mm, width 15 mm, length: 2000 mm
1401695	NS 15 UNPERF 2000MM	DIN rail, material: Steel, unperforated, height 5.5 mm, width 15 mm, length: 2 m
1204096	NS 15 WH PERF 2000MM	DIN rail, material: steel, perforated, height 5.5 mm, width 15 mm, length: 2 m

Drawings

Dimensioned drawing



Address

PHOENIX CONTACT Deutschland GmbH
Flachmarktstr. 8
32825 Blomberg, Germany
Phone +49 5235 3 12000
Fax +49 5235 3 41200
<http://www.phoenixcontact.com>



© 2014 Phoenix Contact
Technical modifications reserved;