

Single relay - REL-PR3- 24AC/3X21 - 2903703

Please be informed that the data shown in this PDF Document is generated from our Online Catalog. Please find the complete data in the user's documentation. Our General Terms of Use for Downloads are valid (<http://phoenixcontact.com/download>)



Plug-in high-power relay with power contacts, 3 PDTs, coil voltage: 24 V AC



Key Commercial Data

| | |
|--------------------------------------|---------------|
| Packing unit | 1 pc |
| GTIN | |
| GTIN | 4046356759151 |
| Weight per Piece (excluding packing) | 84.300 g |
| Custom tariff number | 85364190 |
| Country of origin | Poland |

Technical data

Dimensions

| | |
|--------|---------|
| Width | 38.6 mm |
| Height | 36.1 mm |
| Depth | 45.5 mm |

Ambient conditions

| | |
|---|------------------|
| Ambient temperature (operation) | -40 °C ... 55 °C |
| Ambient temperature (storage/transport) | -40 °C ... 85 °C |

Coil side

| | |
|---|--|
| Nominal input voltage U_N | 24 V AC |
| Mains frequency | 50/60 Hz |
| Typical input current at U_N | 116 mA |
| Typical response time | 5 ms ... 25 ms (depending on phase relation) |
| Typical release time range | 5 ms ... 20 ms (depending on phase relation) |
| Coil resistance | 75 Ω \pm 15 % |
| Power dissipation for nominal condition | 2.78 W |

Single relay - REL-PR3- 24AC/3X21 - 2903703

Technical data

Contact side

| | |
|---|--|
| Contact type | 3 PDTs |
| Type of switch contact | Single contact |
| Contact material | AgNi |
| Maximum switching voltage | 440 V AC |
| | 250 V DC |
| Minimum switching voltage | 10 V (At 24 mA) |
| Min. switching current | 10 mA (at 24 V) |
| Maximum inrush current | 50 A (20 ms, N/O contact) |
| Limiting continuous current | 16 A |
| Interrupting rating (ohmic load) max. | 384 W (at 24 V DC) |
| | 124 W (at 48 V DC) |
| | 108 W (at 60 V DC) |
| | 52 W (at 110 V DC) |
| | 70 W (at 220 V DC) |
| | 4000 VA (for 250 V AC) |
| | 4000 VA (at 440 V AC) |
| Switching capacity according to IEC 60947-5-1 | 2 A (24 V, DC13) |
| | 1.5 A (230 V, AC15) |
| 3-phase motor load | 1500 W (at 400 V, AC3) |
| Motor load according to UL 508 | 1/3 HP, 120 V AC (single-phase AC motor) |
| | 1/2 HP, 240 V AC (single-phase AC motor) |
| | 1/2 HP, 240 V AC (three-phase induction motor) |

General

| | |
|--|--|
| Note | The outputs are not suitable for switching different outer conductors. |
| | Do not use to separate SELV / PELV circuits from other circuits, because safe isolation is not guaranteed. |
| Test voltage relay winding/relay contact | 2.5 kV _{rms} (50 Hz, 1 min.) |
| Test voltage PDT/PDT | 2.5 kV _{rms} (50 Hz, 1 min.) |
| Operating mode | 100% operating factor |
| Degree of protection | RT I |
| Mechanical service life | approx. 10 ⁷ cycles |
| Mounting position | any |

Standards and Regulations

| | |
|----------------------------------|------------------|
| Connection in acc. with standard | CSA |
| Standards/regulations | IEC 60664 |
| | IEC 61810 |
| Rated insulation voltage | 250 V AC |
| Rated surge voltage | 4 kV |
| Insulation | Basic insulation |
| Degree of pollution | 3 |

Single relay - REL-PR3- 24AC/3X21 - 2903703

Technical data

Standards and Regulations

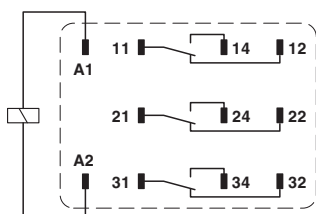
| | |
|----------------------|-----|
| Overvoltage category | III |
|----------------------|-----|

Environmental Product Compliance

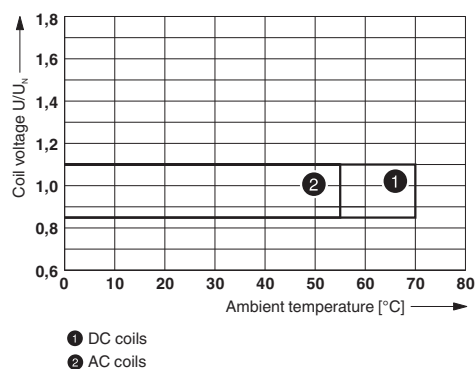
| | |
|------------|---|
| China RoHS | Environmentally Friendly Use Period = 50 |
| | For details about hazardous substances go to tab "Downloads", Category "Manufacturer's declaration" |

Drawings

Circuit diagram

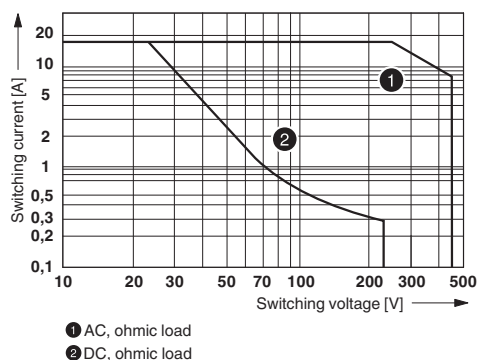


Diagram

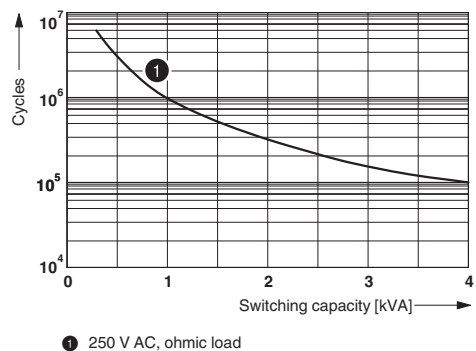


Operating voltage range

Diagram



Diagram

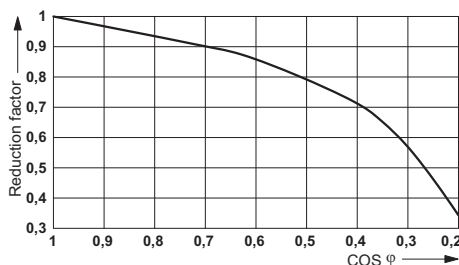


Interrupting rating

Electrical service life

Single relay - REL-PR3- 24AC/3X21 - 2903703

Diagram



Service life reduction factor

Classifications

eCl@ss

| | |
|------------|----------|
| eCl@ss 5.0 | 27371601 |
| eCl@ss 5.1 | 27371600 |
| eCl@ss 6.0 | 27371600 |
| eCl@ss 7.0 | 27371601 |
| eCl@ss 8.0 | 27371601 |
| eCl@ss 9.0 | 27371601 |

ETIM

| | |
|----------|----------|
| ETIM 2.0 | EC001437 |
| ETIM 3.0 | EC001437 |
| ETIM 4.0 | EC001437 |
| ETIM 5.0 | EC001437 |
| ETIM 6.0 | EC001437 |

UNSPSC

| | |
|---------------|----------|
| UNSPSC 6.01 | 30211916 |
| UNSPSC 7.0901 | 39121515 |
| UNSPSC 11 | 39121515 |
| UNSPSC 12.01 | 39121515 |
| UNSPSC 13.2 | 39122334 |

Approvals

Approvals

Approvals

CSA / UL Recognized / cUL Recognized / EAC / cULus Recognized

Single relay - REL-PR3- 24AC/3X21 - 2903703

Approvals

Ex Approvals

Approval details

| | | | |
|------------------|--|---|--------------------------|
| CSA | | http://www.csagroup.org/services-industries/product-listing/ | 2554095 |
| UL Recognized | | http://database.ul.com/cgi-bin/XYV/template/LISEXT/1FRAME/index.htm | FILE E 172140 |
| cUL Recognized | | http://database.ul.com/cgi-bin/XYV/template/LISEXT/1FRAME/index.htm | FILE E 172140 |
| EAC | | | RU C- DE.A*30.B.01082 |
| cULus Recognized | | | |

Accessories

Additional products

Relay base - RIF-4-BPT/3X21 - 2900961



RIF-4... relay base, for high-power relay with 2 or 3 PDTs or 3 N/O contacts, Push-in connection, plug-in option for input/suppressor modules, for mounting on NS 35/7,5

Relay base - RIF-4-BSC/3X21 - 2900960



RIF-4... relay base, for high-power relay with 2 or 3 changeover contacts or 3 N/O contacts, screw connection, plug-in option for input/interference suppression modules, for mounting on NS 35/7,5

