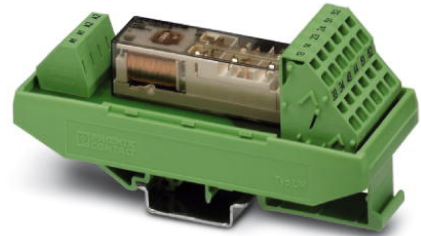



PSR-SPF- 24UC/URM/4X1/2X2

Order No.: 2981457

<http://catalog.phoenixcontact.net/phoenix/treeViewClick.do?UID=2981457>Universal safety relay with forcibly guided contacts, spring-cage
connection, 4 N/O contacts, 2 N/C contacts, width: 40 mm**Commercial data**

EAN	 4 017918 987794
sales group	G542
Pack	1 Pcs.
Customs tariff	85044090
Gross weight in pieces	0.1223 KG
Net weight per piece	0.1188 KG
Catalog page information	Page 99 (C-8-2013)

Product notesWEEE/RoHS-compliant since:
03/30/2006

<http://www.download.phoenixcontact.com>
Please note that the data given here has been taken from the online catalog. For comprehensive information and data, please refer to the user documentation. The General Terms and Conditions of Use apply to Internet downloads.

Technical data**Dimensions**

Width	40 mm
Height	111 mm
Depth	56 mm

Ambient conditions

Ambient temperature (operation)	-20 °C ... 55 °C
Ambient temperature (storage/transport)	-20 °C ... 70 °C

Input data

Nominal input voltage U_N	24 V AC/DC
Input voltage range in reference to U_N	0.8 ... 1.1
Typical input current at U_N	52 mA
Typical response time	10 ms
Typical release time	10 ms

Output data

Contact type	4 N/O contacts
	2 N/C contacts
Contact material	AgSnO ₂
Minimum switching voltage	15 V AC/DC
Maximum switching voltage	250 V AC/DC
Limiting continuous current	6 A (total current on request)
Inrush current, minimum	25 mA
Maximum inrush current	6 A
Interrupting rating (ohmic load) max.	144 W (24 V DC, $\tau = 0$ ms)
	288 W (48 V DC, $\tau = 0$ ms)
	77 W (110 V DC, $\tau = 0$ ms)
	88 W (220 V DC, $\tau = 0$ ms)
	1500 VA (250 V AC, $\tau = 0$ ms)
Maximum interrupting rating (inductive load)	48 W (24 V DC, $\tau = 40$ ms)
	40 W (48 V DC, $\tau = 40$ ms)
	35 W (110 V DC, $\tau = 40$ ms)
	33 W (220 V DC, $\tau = 40$ ms)
Switching capacity min.	0.4 W
Output fuse	10 A gL/gK NEOZED (N/O contact)
	4 A gL/gK NEOZED (N/C contact)

General

Relay type	Electromechanically forcibly guided, dust-proof relay.
Mechanical service life	Approx. 10^7 cycles
Mounting type	DIN rail mounting

Mounting position	any
Designation	Air and creepage distances between the power circuits
Standards/regulations	DIN EN 50178/VDE 0160 EN 50205
Rated surge voltage / insulation	4 kV / Basic isolation, (safe isolation, reinforced insulation and 6 kV between input circuit and enabling current paths.)
Rated insulation voltage	250 V
Pollution degree	2
Surge voltage category	III

Connection data

Conductor cross section solid min.	0.2 mm ²
Conductor cross section solid max.	2.5 mm ²
Conductor cross section stranded min.	0.2 mm ²
Conductor cross section stranded max.	2.5 mm ²
Conductor cross section AWG/kcmil min.	24
Conductor cross section AWG/kcmil max	12
Stripping length	10 mm
Connection method	Spring-cage connection

Certificates / Approvals



Certification

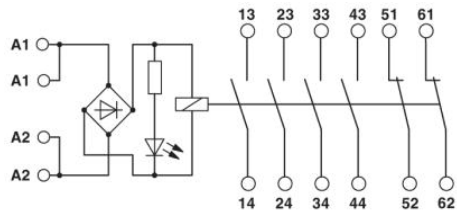
cULus Listed, GOST

Certifications applied for:

Certification Ex:

Drawings

Circuit diagram



Address

PHOENIX CONTACT Deutschland GmbH
Flachmarktstr. 8
32825 Blomberg, Germany
Phone +49 5235 3 12000
Fax +49 5235 3 41200
<http://www.phoenixcontact.com>



© 2014 Phoenix Contact
Technical modifications reserved;