

GJM1555C1H6ROBB01#

“#” at the end indicates the package specification code.

● In Production

High Q Chip Multilayer Ceramic Capacitors ($\leq 100\text{Vdc}$) for Consumer Electronics & Industrial Equipment

GJM1555C1H6ROBB01#

“#” at the end indicates the package specification code.



GJM1555C1H6ROBB01D,GJM1555C1H6ROBB01J,GJM1555C1H6ROBB01V,GJM1555C1H6ROBB01W

Attention

1. This datasheet is downloaded from the website of Murata Manufacturing Co., Ltd. Therefore, it's specifications are subject to change or our products in it may be discontinued without advance notice. Please check with our sales representatives or product engineers before ordering.
 2. This datasheet has only typical specifications because there is no space for detailed specifications.
- Therefore, please review our product specifications or consult the approval sheet for product specifications before ordering.

GJM1555C1H6ROBB01#

“#” at the end indicates the package specification code.

Applications

| | |
|-------------------------|---|
| Unsuitable Applications | Please be sure to read and comply with these " <u>Precautions for use</u> ". |
| Specific Applications | <u>Consumer equipment,Industrial Equipment,Automotive infotainment/comfort equipment,Medical equipment [GHTF A/B/C] except for implant equipment,Mobile Electronics</u> Please refer to Our Website and specifications, etc. for information about the performance, functions, quality, management, and safety required for the above applications, and use Products after confirming the performance and reliability of the actual Product. |

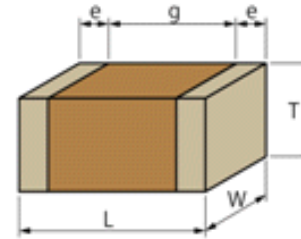
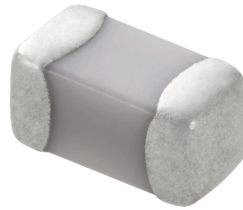
Attention

1. This datasheet is downloaded from the website of Murata Manufacturing Co., Ltd. Therefore, it's specifications are subject to change or our products in it may be discontinued without advance notice. Please check with our sales representatives or product engineers before ordering.
 2. This datasheet has only typical specifications because there is no space for detailed specifications.
- Therefore, please review our product specifications or consult the approval sheet for product specifications before ordering.

GJM1555C1H6R0BB01#

“#” at the end indicates the package specification code.

Appearance & Shape



| | |
|--------------------------|---------------|
| Chip size code (mm/inch) | 1005M/0402 |
| Length | 1mm ±0.05mm |
| Width | 0.5mm ±0.05mm |
| Thickness | 0.5mm ±0.05mm |
| External terminal size€ | 0.15 ~ 0.35mm |

Attention

1. This datasheet is downloaded from the website of Murata Manufacturing Co., Ltd. Therefore, it's specifications are subject to change or our products in it may be discontinued without advance notice. Please check with our sales representatives or product engineers before ordering.
 2. This datasheet has only typical specifications because there is no space for detailed specifications.
- Therefore, please review our product specifications or consult the approval sheet for product specifications before ordering.

GJM1555C1H6R0BB01#

“#” at the end indicates the package specification code.

Specifications

| | |
|--|-------------|
| Temperature characteristics (complied standard) | EIA |
| Temperature characteristics | COG |
| Temperature range of temperature characteristics | 25 ~ 125°C |
| Operating Temperature | -55 ~ 125°C |
| Capacitance | 6pF |
| Tolerance of capacitance | ±0.1pF |
| Rated Voltage DC | 50Vdc |

Attention

1. This datasheet is downloaded from the website of Murata Manufacturing Co., Ltd. Therefore, it's specifications are subject to change or our products in it may be discontinued without advance notice. Please check with our sales representatives or product engineers before ordering.
 2. This datasheet has only typical specifications because there is no space for detailed specifications.
- Therefore, please review our product specifications or consult the approval sheet for product specifications before ordering.

GJM1555C1H6R0BB01#

“#” at the end indicates the package specification code.

References

| Packaging | Specifications ? | Standard Packing Quantity |
|-----------|---|---------------------------|
| D | φ180mm Reel W8P2* Paper Tape | 10000 |
| J | φ330mm Reel W8P2* Paper Tape | 50000 |
| V | φ330mm Reel W8P1* Paper Tape | 100000 |
| W | φ180mm Reel W8P1* Paper Tape | 20000 |

| Mass(Typ.) | |
|------------|-------|
| 1 piece | 1.6mg |

Attention

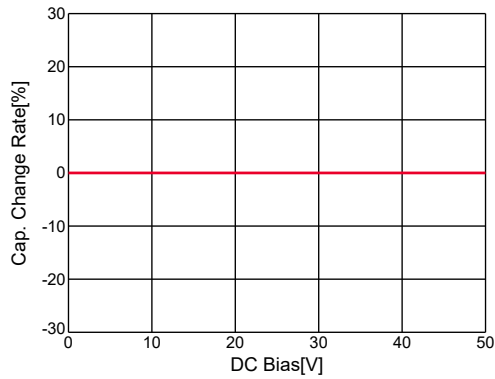
1. This datasheet is downloaded from the website of Murata Manufacturing Co., Ltd. Therefore, it's specifications are subject to change or our products in it may be discontinued without advance notice. Please check with our sales representatives or product engineers before ordering.
 2. This datasheet has only typical specifications because there is no space for detailed specifications.
- Therefore, please review our product specifications or consult the approval sheet for product specifications before ordering.

GJM1555C1H6R0BB01#

“#” at the end indicates the package specification code.

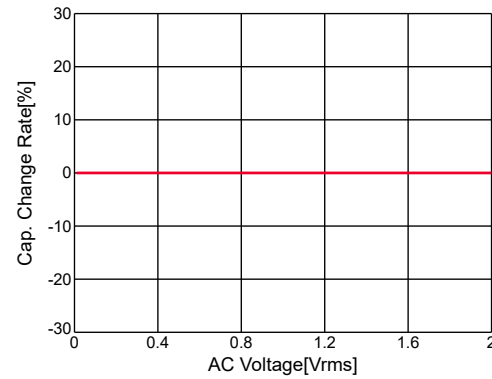
Basic

C-DC bias(Cap Change)



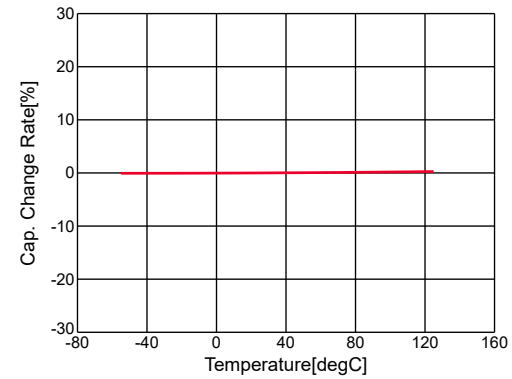
GJM1555C1H6R0BB01#,C-DC bias,capchange, 25.0degC, AC1Vrms

C-AC voltage(Cap Change)



GJM1555C1H6R0BB01#,C-AC Voltage,capchange, DCOV, 25.0degC

C-Temp.(Cap Change)



GJM1555C1H6R0BB01#,C-Temp.,capchange, DCOV, AC1Vrms

Attention

1. This datasheet is downloaded from the website of Murata Manufacturing Co., Ltd. Therefore, it's specifications are subject to change or our products in it may be discontinued without advance notice. Please check with our sales representatives or product engineers before ordering.
 2. This datasheet has only typical specifications because there is no space for detailed specifications.
- Therefore, please review our product specifications or consult the approval sheet for product specifications before ordering.

GJM1555C1H6ROBB01#

Note: If you have not downloaded this document from our official website, please note that the information provided may not be the most current. Please download the latest datasheet of GJM1555C1H6ROBB01# from the official website of Murata
<https://pim.murata.com/en-eu/pim/details/?partNum=GJM1555C1H6ROBB01#>

“#” at the end indicates the package specification code.

Attention

1. This datasheet is downloaded from the website of Murata Manufacturing Co., Ltd. Therefore, it's specifications are subject to change or our products in it may be discontinued without advance notice. Please check with our sales representatives or product engineers before ordering.
2. This datasheet has only typical specifications because there is no space for detailed specifications.

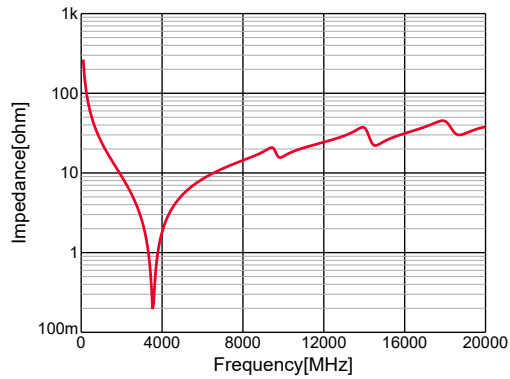
Therefore, please review our product specifications or consult the approval sheet for product specifications before ordering.

GJM1555C1H6R0BB01#

“#” at the end indicates the package specification code.

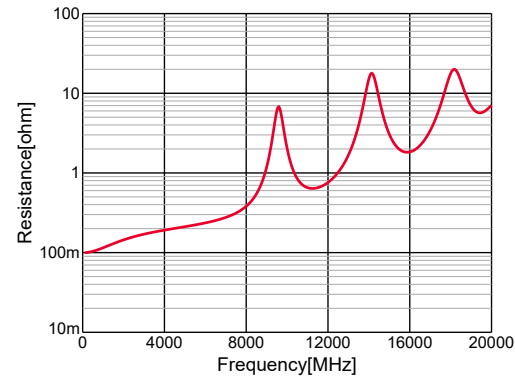
Frequency Characteristic

|Z|



GJM1555C1H6R0BB01#,|Z|,DC0V,25degC

R



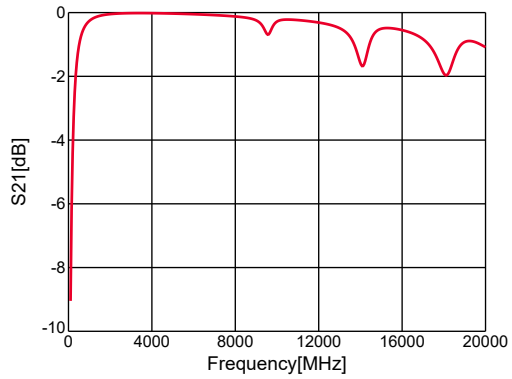
GJM1555C1H6R0BB01#,R,DC0V,25degC

Attention

1. This datasheet is downloaded from the website of Murata Manufacturing Co., Ltd. Therefore, it's specifications are subject to change or our products in it may be discontinued without advance notice. Please check with our sales representatives or product engineers before ordering.
 2. This datasheet has only typical specifications because there is no space for detailed specifications.
- Therefore, please review our product specifications or consult the approval sheet for product specifications before ordering.

GJM1555C1H6R0BB01#

“#” at the end indicates the package specification code.



GJM1555C1H6R0BB01#,S21,DCOV,25degC,series

Attention

1. This datasheet is downloaded from the website of Murata Manufacturing Co., Ltd. Therefore, it's specifications are subject to change or our products in it may be discontinued without advance notice. Please check with our sales representatives or product engineers before ordering.
 2. This datasheet has only typical specifications because there is no space for detailed specifications.
- Therefore, please review our product specifications or consult the approval sheet for product specifications before ordering.