

# Printed-circuit board connector - MC 1,5/ 9-G-3,81 P26 THRR56 - 1782530

Please be informed that the data shown in this PDF Document is generated from our Online Catalog. Please find the complete data in the user's documentation. Our General Terms of Use for Downloads are valid (<http://phoenixcontact.com/download>)

PCB headers, nominal current: 8 A, rated voltage (III/2): 160 V, number of positions: 9, pitch: 3.81 mm, color: black, contact surface: Tin, mounting: THR soldering




The figure shows a 10-position version of the product

## Your advantages

- Designed for integration into the SMT soldering process
- Maximum flexibility when it comes to device design – one header for connectors with different connection technologies



## Key Commercial Data

|                        |   |
|------------------------|---|
| Packing unit           | 470 pc  |
| Minimum order quantity | 470 pc  |
| GTIN                   | <br>4 046356 550345 |
| GTIN                   | 4046356550345   |

## Technical data

### Item properties

|                           |                     |
|---------------------------|---------------------|
| Brief article description | Feed-through header |
| Plug-in system            | MINI COMBICON       |
| Type of contact           | Male connector      |
| Range of articles         | MC 1,5/...-G-THR    |
| Pitch                     | 3.81 mm             |
| Number of positions       | 9                   |
| Mounting type             | THR soldering       |
| Pin layout                | Linear pinning      |
| Locking                   | without             |
| Number of levels          | 1                   |
| Number of connections     | 9                   |

# Printed-circuit board connector - MC 1,5/ 9-G-3,81 P26 THRR56 - 1782530

## Technical data

### Item properties

|                      |   |
|----------------------|---|
| Number of potentials | 9 |
|----------------------|---|

### Electrical parameters

|                                  |        |
|----------------------------------|--------|
| Rated current                    | 8 A    |
| Rated insulation voltage (III/2) | 160 V  |
| Rated surge voltage (III/2)      | 2.5 kV |

### Material data - contact

|   |   |
|---|---|
| Note  | WEEE/RoHS-compliant, free of whiskers according to IEC 60068-2-82/ JEDEC JESD 201 |
| Contact material                            | Cu alloy  |
| Surface characteristics                     | Tin-plated  |
| Metal surface contact area (top layer)      | Tin (3 - 5 µm Sn)   |
| Metal surface contact area (middle layer)   | Nickel (1 - 3 µm Ni),   |
| Metal surface soldering area (top layer)    | Tin (3 - 5 µm Sn)   |
| Metal surface soldering area (middle layer) | Nickel (1.3 - 3 µm Ni)  |

### Material data - housing

|  |      |
|--|------|
| Insulating material                    | LCP  |
| Insulating material group              | IIIa |
| CTI according to IEC 60112             | 175  |
| Flammability rating according to UL 94 | V0   |

### Dimensions for the product

|                             |   |
|-----------------------------|---|
| Caption                     | Schematic representation – for additional information, see product range drawing in the Download Center |
| Length [ l ]                | 9.2 mm  |
| Width [ w ]                 | 35.68 mm  |
| Height [ h ]                | 9.5 mm  |
| Pitch                       | 3.81 mm   |
| Height (without solder pin) | 6.9 mm  |
| Solder pin [P]              | 2.6 mm  |
| Pin dimensions              | 0.8 x 0.8 mm  |
| Dimension a                 | 30.48 mm  |

### Dimensions for PCB design

|               |        |
|---------------|--------|
| Hole diameter | 1.4 mm |
|---------------|--------|

### Packaging information

|                            |                 |
|----------------------------|-----------------|
| Type of packaging          | 56 mm wide tape |
| Pieces per package         | 470             |
| Denomination packing units | Pcs.            |
| [W] tape width             | 56 mm           |

# Printed-circuit board connector - MC 1,5/ 9-G-3,81 P26 THRR56 - 1782530

## Technical data

### Packaging information

|                             |                 |
|-----------------------------|-----------------|
| [A] coil diameter           | 330 mm          |
| [W2] coil overall dimension | 62.4 mm         |
| Outer packaging type        | Transparent-Bag |

### Processing notes

|   |  |
|---|--|
| Process                                   | Reflow/wave soldering                    |
| Specification                             | Following IPC/JEDEC J-STD-020D.1:2008-03 |
|   | Following IEC 61760-1:2006-04            |
|   | Following IEC 60068-2-58:2005-02         |
| Moisture Sensitive Level                  | MSL 1                                    |
| Classification temperature T <sub>c</sub> | 260 °C                                   |
| Solder cycles in the reflow               | 3  |

### Ambient conditions

|   |  |
|---|--|
| Ambient temperature (storage/transport) | -40 °C ... 70 °C                         |
| Ambient temperature (assembly)          | -5 °C ... 100 °C                         |
| Ambient temperature (operation)         | -40 °C (dependent on the derating curve) |

### Air clearances and creepage distances

|                                  |        |
|----------------------------------|--------|
| Insulating material group        | IIIa   |
| Rated insulation voltage (III/3) | 160 V  |
| Rated insulation voltage (III/2) | 160 V  |
| Rated insulation voltage (II/2)  | 250 V  |
| Rated surge voltage (III/3)      | 2.5 kV |
| Rated surge voltage (III/2)      | 2.5 kV |
| Rated surge voltage (II/2)       | 2.5 kV |

### Standards and Regulations

|  |        |
|--|--------|
| Connection in acc. with standard       | EN-VDE |
|  | CUL    |
| Flammability rating according to UL 94 | V0     |

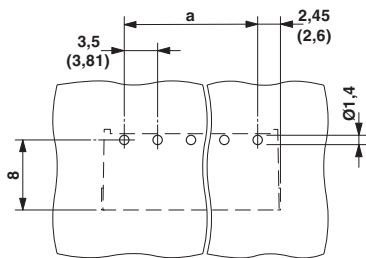
### Environmental Product Compliance

|            |   |
|------------|---|
| China RoHS | Environmentally friendly use period: unlimited = EFUP-e |
|            | No hazardous substances above threshold values          |

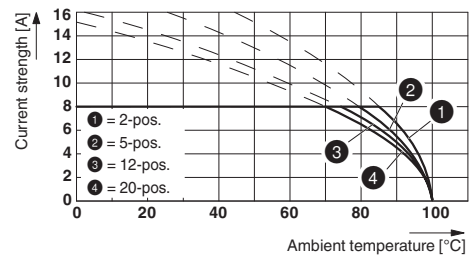
## Drawings

# Printed-circuit board connector - MC 1,5/ 9-G-3,81 P26 THR56 - 1782530

Drilling diagram

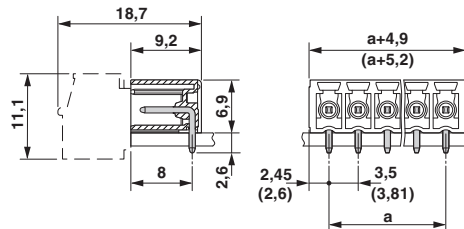


Diagram



Type: FK-MCP 1,5/...-ST-3,81 with MC 1,5/...-G-3,81 P... THR

Dimensional drawing



## Approvals

Approvals

Approvals

IECEE CB Scheme / VDE Gutachten mit Fertigungsüberwachung / EAC / cULus Recognized

Ex Approvals

## Approval details

|                    |                     |   |                |
|--------------------|---------------------|---|----------------|
| IECEE CB Scheme    | <b>CB</b><br>scheme | <a href="http://www.iecee.org/">http://www.iecee.org/</a> | DE1-60987-B1B2 |
| Nominal voltage UN | 160 V               |   |                |
| Nominal current IN | 8 A                 |   |                |

# Printed-circuit board connector - MC 1,5/ 9-G-3,81 P26 THRR56 - 1782530

## Approvals

|  |  |  |          |
|--|--|--|----------|
| VDE Gutachten mit<br>Fertigungsüberwachung |  | <a href="http://www2.vde.com/de/Institut/Online-Service/VDE-gepruefteProdukte/Seiten/Online-Suche.aspx">http://www2.vde.com/de/Institut/Online-Service/<br/>VDE-gepruefteProdukte/Seiten/Online-Suche.aspx</a> | 40011723 |
| Nominal voltage UN                         |  | 160 V  |          |
| Nominal current IN                         |  | 8 A  |          |

|     |  |         |
|-----|--|---------|
| EAC |  | B.01742 |
|-----|--|---------|

|                    |       |   |                 |
|--------------------|-------|---|-----------------|
| cULus Recognized   |       | <a href="http://database.ul.com/cgi-bin/XYV/template/LISEXT/1FRAME/index.htm">http://database.ul.com/cgi-bin/XYV/template/LISEXT/1FRAME/index.htm</a> | E60425-20110128 |
|                    | D     | B   |                 |
| Nominal voltage UN | 300 V | 300 V   |                 |
| Nominal current IN | 8 A   | 8 A   |                 |

Phoenix Contact 2019 © - all rights reserved  
<http://www.phoenixcontact.com>

PHOENIX CONTACT GmbH & Co. KG  
Flachsmarktstr. 8  
32825 Blomberg  
Germany  
Tel. +49 5235 300  
Fax +49 5235 3 41200  
<http://www.phoenixcontact.com>