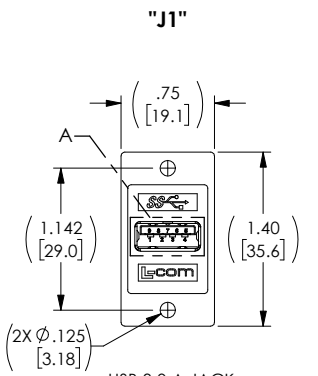
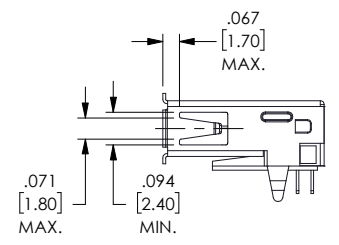
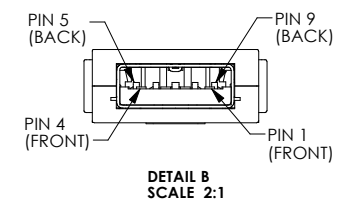
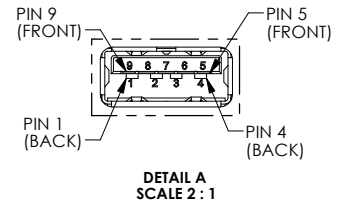
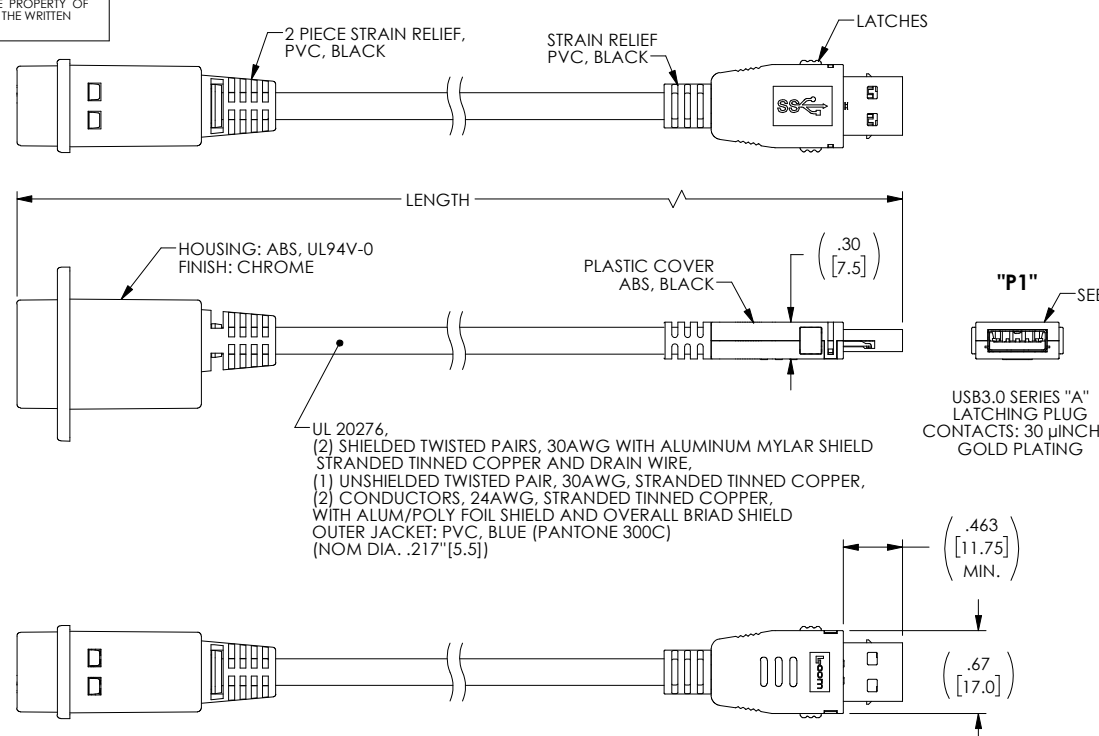
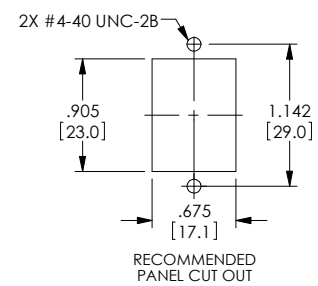


THE INFORMATION CONTAINED IN THIS DRAWING IS THE SOLE PROPERTY OF L-COM, INC. ANY REPRODUCTIONS IN PART OR WHOLE WITHOUT THE WRITTEN PERMISSION OF L-COM, INC. IS PROHIBITED.

REVISIONS			
REV	DESCRIPTION	DATE	CHANGED BY
A	REV A DRAWING RELEASED	03/06/18	JLABOY

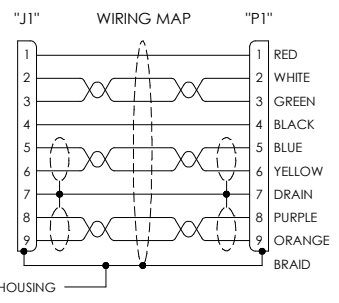


USB 3.0 A JACK
9 CONTACTS
BULKHEAD ADAPTER
SHIELDED
CONTACTS: 30 μINCHES
GOLD PLATING



RECOMMENDED
PANEL CUT OUT

UL 20276,
(2) SHIELDED TWISTED PAIRS, 30AWG WITH ALUMINUM MYLAR SHIELD
STRANDED TINNED COPPER AND DRAIN WIRE,
(1) UNSHIELDED TWISTED PAIR, 30AWG, STRANDED TINNED COPPER,
(2) CONDUCTORS, 24AWG, STRANDED TINNED COPPER,
WITH ALUM/POLY FOIL SHIELD AND OVERALL Braid SHIELD
OUTER JACKET: PVC, BLUE (PANTONE 300C)
(NOM DIA. .217" [5.5])



PART NUMBER	LENGTH METERS [FEET]
U3A00030-03M	0.3 [.98]
U3A00030-05M	0.5 [1.64]
U3A00030-075M	0.75 [2.46]
U3A00030-1M	1.0 [3.28]
U3A00030-105M	1.5 [4.92]

NOTES:

1. OPERATING TEMPERATURE: -10°C TO +70°C
2. CABLE ASSEMBLY SHALL BE TESTED FOR CONTINUITY.
3. CABLE ASSEMBLY SHALL BE INDIVIDUALLY PACKAGED IN ACCORDANCE WITH L-COM SPECIFICATION PS-0031.

REGULATORY COMPLIANCE:
CE2011/65/EU (RoHS DIRECTIVE)

UNLESS OTHERWISE SPECIFIED,
DIMENSIONS ARE IN INCHES (mm)
OVERALL CABLE LENGTH TOLERANCE:
≤12 (305) ≤60 (1524) = +.031 (-0)
>60 (1524) ≤120 (3048) = +.1 (0.2) (-0)
>120 (3048) ≤300 (7620) = +.4 (1.02) (-0)
>300 (7620) = +.5 (1.27)
ALL OTHER DIMENSIONAL TOLERANCES:
X = ±2 (5.08)
XX = ±0.01 (0.25)
XXX = ±.005 (0.127)

APPROVALS DATE
DRAWN BY S.LI 06/27/17
CHECKED BY B.ZHANG 06/27/17
APPROVED BY S.PAN 06/27/17
CONFIGURATION DETAILS OF UNDIMENSIONED FEATURES MAY VARY
COLOR VARIATIONS MAY OCCUR

L-com Global Connectivity 50 HIGH STREET NORTH ANDOVER, MA 01845

CATEGORY: USB

PRODUCT DESCRIPTION: CA, USB3.0 A-F PNL/A LATCH

SIZE: B	PSCM NO.: 43321	DWG. NO.: U3A00030	REV.: A
----------------	------------------------	---------------------------	----------------

SCALE: 1:1 CAD FILE: U3A00030.SLDRAW SHEET 1 OF 1