



## Main

|  |                                 |
|--|---------------------------------|
| Range of product                             | Harmony Relay                   |
| Series name                                  | Interface relay                 |
| Product or component type                    | Plug-in relay                   |
| Device short name                            | RSB                             |
| Contacts type and composition                | 1 C/O                           |
| Contact operation                            | Standard                        |
| [Uc] control circuit voltage                 | 230 V AC                        |
| [Ithe] conventional enclosed thermal current | 12 A -40...104 °F (-40...40 °C) |
| Status LED                                   | Without                         |
| Control type                                 | Without push-button             |

## Complementary

|  |  |
|--|--|
| Shape of pin                           | Flat   |
| Average coil resistance                | 38500 Ohm AC 20 °C +/- 15 %  |
| [Ue] rated operational voltage         | 184...276 V AC 50 Hz<br>195.5...276 V AC 60 Hz   |
| [Ui] rated insulation voltage          | 400 V EN/IEC 60947   |
| [Uimp] rated impulse withstand voltage | 3.6 kV IEC 61000-4-5   |
| Contacts material                      | Silver alloy (Ag/Ni)   |
| [Ie] rated operational current         | 12 A AC-1/DC-1) NO IEC<br>6 A AC-1/DC-1) NC IEC  |
| Minimum switching current              | 5 mA   |
| Maximum switching voltage              | 300 V DC<br>400 V AC   |
| Minimum switching voltage              | 5 V  |
| Maximum switching capacity             | 3000 VA AC<br>336 W DC   |
| Resistive rated load                   | 12 A 250 V AC<br>12 A 28 V DC  |
| Minimum switching capacity             | 300 mW 5 mA  |
| Operating rate                         | <= 600 cycles/hour under load<br><= 72000 cycles/hour no-load  |
| Mechanical durability                  | 30000000 cycles  |
| Electrical durability                  | 100000 Cycles, 12 A 250 V, AC-1 NO<br>100000 cycles, 6 A 250 V, AC-1 NC  |
| Operating time                         | 10 ms between coil de-energisation and making of the Off-delay contact<br>12 ms between coil energisation and making of the On-delay contact |
| Marking                                | CE   |
| Average coil consumption               | 0.75 VA AC 60 Hz   |
| Drop-out voltage threshold             | >= 0.15 Uc AC  |
| Safety reliability data                | B10d = 100000  |
| Protection category                    | RT I   |
| Operating position                     | Any position   |
| Sale per indivisible quantity          | 10   |
| Device presentation                    | Complete product   |

## Environment

|                                       |   |
|---------------------------------------|---|
| Dielectric strength                   | 1000 V AC between contacts<br>2500 V AC between poles<br>5000 V AC between coil and contact |
| Standards                             | CSA C22.2 No 14<br>EN/IEC 61810-1<br>UL 508   |
| Product certifications                | CSA<br>GOST<br>UL   |
| Ambient air temperature for storage   | -40...185 °F (-40...85 °C)  |
| Vibration resistance                  | +/- 1 mm 10...55 Hz)EN/IEC 60068-2-6  |
| IP degree of protection               | IP40 EN/IEC 60529   |
| Shock resistance                      | 10 gn 11 ms) not operating EN/IEC 60068-2-27<br>5 gn 11 ms) in operation EN/IEC 60068-2-27  |
| Ambient air temperature for operation | -40...158 °F (-40...70 °C) AC)<br>-40...185 °F (-40...85 °C) DC)                            |


## Ordering and shipping details

|                       |                               |
|-----------------------|-------------------------------|
| Category              | 21127 - ZELIO ICE CUBE RELAYS |
| Discount Schedule     | CP2                           |
| GTIN                  | 00785901525974                |
| Nbr. of units in pkg. | 20                            |
| Package weight(Lbs)   | 0.16 lb(US) (0.07 kg)         |
| Returnability         | No                            |
| Country of origin     | FR                            |

## Packing Units

|                              |                         |
|------------------------------|-------------------------|
| Unit Type of Package 1       | PCE                     |
| Package 1 Height             | 2.95 in (7.5 cm)        |
| Package 1 width              | 4.09 in (10.4 cm)       |
| Package 1 Length             | 13.39 in (34 cm)        |
| Unit Type of Package 2       | BB1                     |
| Number of Units in Package 2 | 20                      |
| Package 2 Weight             | 2.40 lb(US) (1.09 kg)   |
| Package 2 Height             | 2.95 in (7.5 cm)        |
| Package 2 width              | 4.09 in (10.4 cm)       |
| Package 2 Length             | 13.39 in (34 cm)        |
| Unit Type of Package 3       | S03                     |
| Number of Units in Package 3 | 140                     |
| Package 3 Weight             | 17.91 lb(US) (8.126 kg) |
| Package 3 Height             | 11.81 in (30 cm)        |
| Package 3 width              | 11.81 in (30 cm)        |
| Package 3 Length             | 15.75 in (40 cm)        |

## Offer Sustainability

|                           |  |
|---------------------------|--|
| Sustainable offer status  | Green Premium product  |
| California proposition 65 | WARNING: This product can expose you to chemicals including: Nickel compounds, which is known to the State of California to cause cancer, and Di-isodecyl phthalate (DIDP), which is known to the State of California to cause birth defects or other reproductive harm. For more information go to <a href="http://www.P65Warnings.ca.gov">www.P65Warnings.ca.gov</a> |
| REACH free of SVHC        | Yes  |
| EU RoHS Directive         | Pro-active compliance (Product out of EU RoHS legal scope)  EU RoHS Declaration   |
| Toxic heavy metal free    | Yes  |
| Mercury free              | Yes  |

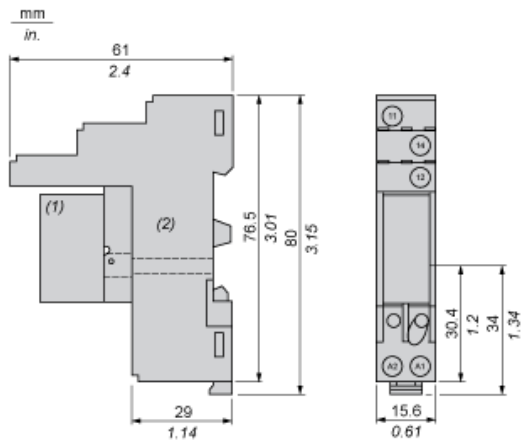
|                            |  |
|----------------------------|--|
| RoHS exemption information | <a href="#">Yes</a>  |
| China RoHS Regulation      | <a href="#">China RoHS Declaration</a>   |
| Environmental Disclosure   | <a href="#">Product Environmental Profile</a>  |
| WEEE                       | The product must be disposed on European Union markets following specific waste collection and never end up in rubbish bins. |

### Contractual warranty

|          |           |
|----------|-----------|
| Warranty | 18 months |
|----------|-----------|

Dimensions

Relay Complete with Socket

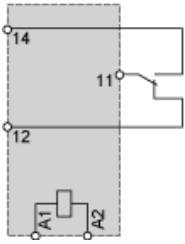
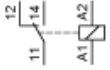


- (1) Relays
- (2) Socket

---

Wiring Diagram

---

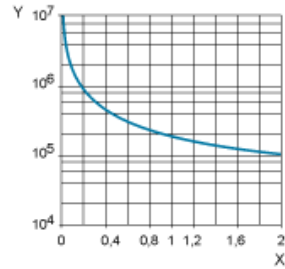


NOTE: For DC input, A1 have to be +, otherwise it would short circuit from protection module

Electrical Durability of Contacts

Durability (inductive load) = durability (resistive load) x reduction coefficient.

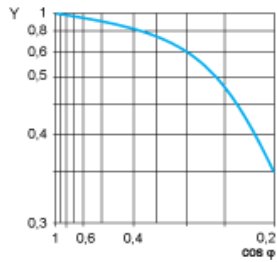
Resistive AC load



X Switching capacity (kVA)

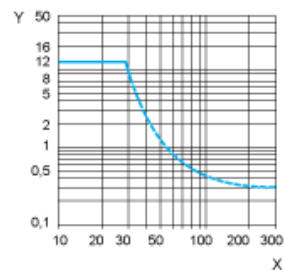
Y Durability (Number of operating cycles)

Reduction coefficient for inductive AC load (depending on power factor  $\cos \phi$ )



Y Reduction coefficient (A)

Maximum switching capacity on resistive DC load



X Voltage DC

Y Current DC

Note : These are typical curves, actual durability depends on load, environment, duty cycle, etc.