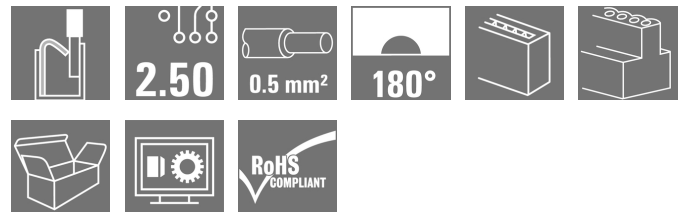


OMNIMATE Signal - series BL/SL 2.50 BLF 2.50/08/180 SN BK BX

Weidmüller Interface GmbH & Co. KG
Klingenbergstraße 16
D-32758 Detmold
Germany
Fon: +49 5231 14-0
Fax: +49 5231 14-292083
www.weidmueller.com



PUSH IN - Weidmüller's innovative connection system simplifies the wire connection process.

The benefits for users and applications:

- High component density because of small pitch. Simply insert the prepared wire - and you're done
- Simplified processing, thanks to integrated push buttons for opening the terminal point
- Intuitive handling – since the conductor entry and handling areas are clearly separated

General ordering data

| | |
|--------------|--|
| Type | BLF 2.50/08/180 SN BK BX |
| Order No. | 2439710000 |
| Version | PCB plug-in connector, female plug, Pitch in mm (P): 2.50 mm, No. of poles: 8, Box |
| GTIN (EAN) | 4050118454789 |
| Qty. | 125 pc(s). |
| Product data | IEC: 320 V / 6 A / 0.08 - 0.5 mm ² UL: 150 V / 5 A / AWG 28 - AWG 20 |
| Packaging | Box |

**OMNIMATE Signal - series BL/SL 2.50
BLF 2.50/08/180 SN BK BX**

Weidmüller Interface GmbH & Co. KG
Klingenbergstraße 16
D-32758 Detmold
Germany
Fon: +49 5231 14-0
Fax: +49 5231 14-292083
www.weidmueller.com

Technical data**Dimensions and weights**

| | |
|------------|-------|
| Net weight | 5.4 g |
|------------|-------|

System parameters

| | | | |
|--|-------------------------------------|--|--------------------------|
| Product family | OMNIMATE Signal - series BL/SL 2.50 | Type of connection | PUSH IN direct insertion |
| Wire connection method | PUSH IN | Pitch in mm (P) | 2.5 mm |
| Pitch in inches (P) | 0.984 inch | Conductor outlet direction | 180° |
| No. of poles | 8 | L1 in mm | 17.5 mm |
| L1 in inches | 6.888 inch | Number of rows | 1 |
| Pin series quantity | 1 | Touch-safe protection acc. to DIN VDE 57 106 | Safe from finger touch |
| Touch-safe protection acc. to DIN VDE 0470 | IP 20 | Volume resistance | < 10 mΩ |
| Stripping length | 8 mm | Screwdriver blade standard | DIN 5264 |
| Plugging cycles | 25 | Packaging | Box |

Material data

| | | | |
|---------------------------------------|----------|---------------------------------------|--------------|
| Insulating material | PA | Colour | Black |
| Colour chart (similar) | RAL 9011 | CTI | ≥ 600 |
| UL 94 flammability rating | V-0 | Contact material | Copper alloy |
| Contact surface | tinned | Operating temperature, min. | -40 °C |
| Operating temperature, max. | 105 °C | Temperature range, installation, min. | -25 °C |
| Temperature range, installation, max. | 105 °C | | |

Conductors suitable for connection

| | | | |
|---|----------------------|---|----------------------|
| Clamping range, min. | 0.08 mm ² | Clamping range, max. | 0.5 mm ² |
| Wire connection cross section AWG, min. | AWG 28 | Wire connection cross section AWG, max. | AWG 20 |
| Solid, min. H05(07) V-U | 0.08 mm ² | Solid, max. H05(07) V-U | 0.5 mm ² |
| Stranded, min. H07V-R | 0.08 mm ² | Stranded, max. H07V-R | 0.5 mm ² |
| Flexible, min. H05(07) V-K | 0.08 mm ² | Flexible, max. H05(07) V-K | 0.5 mm ² |
| w. wire end ferrule, DIN 46228 pt 1, min. | 0.25 mm ² | w. wire end ferrule, DIN 46228 pt 1, max. | 0.34 mm ² |

Rated data acc. to IEC

| | | | |
|---|-----------|---|--------|
| tested acc. to standard | IEC 61984 | Rated current, min. no. of poles (Tu=20°C) | 6 A |
| Rated current, max. no. of poles (Tu=20°C) | 6 A | Rated current, min. no. of poles (Tu=40°C) | 6 A |
| Rated current, max. no. of poles (Tu=40°C) | 6 A | Rated voltage for surge voltage class / pollution degree II/2 | 320 V |
| Rated voltage for surge voltage class / pollution degree III/2 | 320 V | Rated voltage for surge voltage class / pollution degree III/3 | 80 V |
| Rated impulse voltage for surge voltage class/ pollution degree II/2 | 2.5 kV | Rated impulse voltage for surge voltage class/ pollution degree III/2 | 2.5 kV |
| Rated impulse voltage for surge voltage class/ contamination degree III/3 | 2.5 kV | | |

Rated data acc. to CSA

| | | | |
|-------------------------------|--------|-------------------------------|--------|
| Rated voltage (Use group B) | 150 V | Rated current (use group B) | 5 A |
| Wire cross-section, AWG, min. | AWG 28 | Wire cross-section, AWG, max. | AWG 20 |

Creation date July 2, 2018 10:27:39 AM CEST

Catalogue status 29.06.2018 / We reserve the right to make technical changes.

**OMNIMATE Signal - series BL/SL 2.50
BLF 2.50/08/180 SN BK BX**

Weidmüller Interface GmbH & Co. KG
 Klingenbergstraße 16
 D-32758 Detmold
 Germany
 Fon: +49 5231 14-0
 Fax: +49 5231 14-292083
 www.weidmueller.com

Technical data**Rated data acc. to UL 1059**

Institute (cURus)



Certificate No. (cURus)

E60693

Rated voltage (use group B)

150 V

Rated current (use group B)

5 A

Wire cross-section, AWG, min.

AWG 28

Wire cross-section, AWG, max.

AWG 20

Reference to approval values

Specifications are maximum values, details - see approval certificate.

Classifications

ETIM 6.0

EC002637

eClass 6.2

27-26-07-04

eClass 9.1

27-44-04-02

Notes

Notes

- Rated current related to rated cross-section & min. No. of poles.
- P on drawing = pitch
- Crimp shape A for wire-end ferrules with crimping tools PZ 1,5 (order no. 9005990000) or PZ 6/5 (order no. 9011460000) for larger wire cross-sections recommended.
- Rated data refer only to the component itself. Clearance and creepage distances to other components are to be designed in accordance with the relevant application standards.

IPC conformity

Conformity: The products are developed, manufactured and delivered according international recognized standards and norms and comply with the assured properties in the data sheet resp. fulfill decorative properties in accordance with IPC-A-610 "Class 2". Further claims on the products can be evaluated on request.

Approvals

Approvals

**Downloads**

Approval/Certificate/Document of Conformity

[Declaration of the Manufacturer](#)

Brochure/Catalogue

[FL DRIVES EN](#)
[MB DEVICE MANUF. EN](#)
[FL DRIVES DE](#)
[FL BUILDING SAFETY EN](#)
[FL APPL LED LIGHTING EN](#)
[FL INDUSTR.CONTROLS EN](#)
[FL MACHINE SAFETY EN](#)
[FL HEATING ELECTR EN](#)
[FL APPL INVERTER EN](#)
[FL_BASE_STATION_EN](#)
[FL ELEVATOR EN](#)
[FL POWER SUPPLY EN](#)
[FL 72H SAMPLE SER EN](#)
[PO OMNIMATE EN](#)

Engineering Data

[EPLAN, WSCAD](#)

White Paper wire connection

[Download Whitepaper](#)

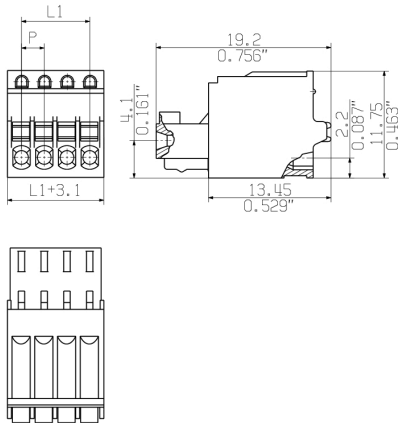
Creation date July 2, 2018 10:27:39 AM CEST

**OMNIMATE Signal - series BL/SL 2.50
BLF 2.50/08/180 SN BK BX**

Weidmüller Interface GmbH & Co. KG
Klingenbergstraße 16
D-32758 Detmold
Germany
Fon: +49 5231 14-0
Fax: +49 5231 14-292083
www.weidmueller.com

Drawings

Dimensional drawing



Graph

