



10-100W Low Profile DIN Rail Mount Power Supplies



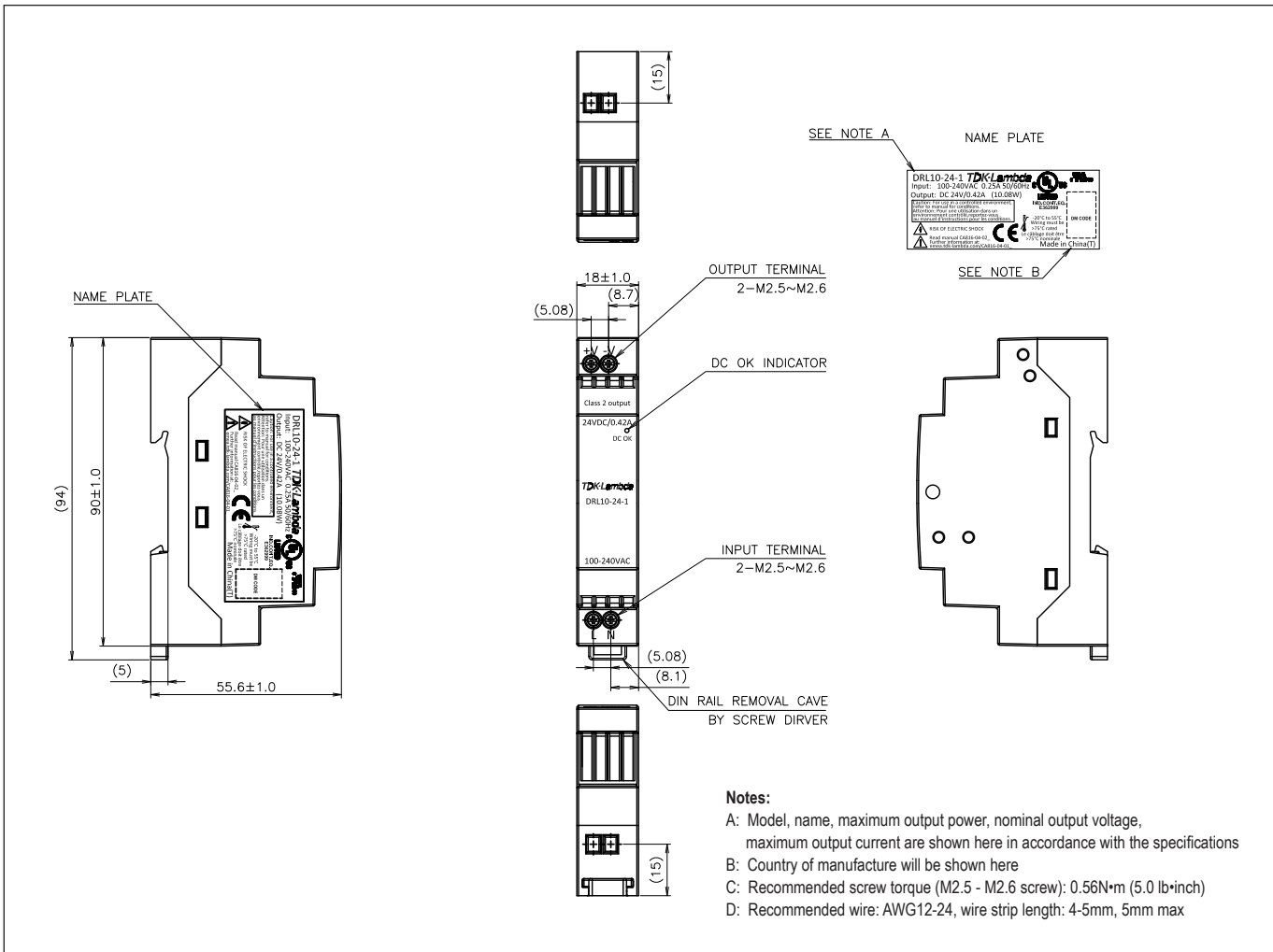
Features	Benefits
• High Efficiency, up to 90% @ 230VAC	• Energy Saving - Improved Thermal Performance
• UL1310 Class 2 Compliant	• Reduced Installation Costs (NEC Class 2)
• Low No Load Consumption	• ErP Compliant
• Long E-Cap-Life (>8 years @ 40°C, 75% Load, 230VAC)	• High In-Service Lifetime
• Class II, Wide Range Input (85-264VAC)	• Global Application, No Earth Required

Specification		DRL10	DRL30	DRL60	DRL100
Input Voltage Range	V	85 - 264VAC (Withstands 300VAC for 5 seconds)			
Input Frequency	Hz	47 - 63Hz			
Inrush Current at 230VAC (typ) (Cold Start)	A	40	50	60	60
Power Factor (115/230VAC)		Meets IEC61000-3-2 Class A			
Input Current (110/230VAC)	A	0.56 / 0.42 0.18 / 0.12	0.58 / 0.45 0.6 / 0.4	0.5 / 0.43 1.2 / 0.8	0.5 / 0.47 2.0 / 1.1
Line & Load Regulation	-	See model selector			
Ripple & Noise	-	See model selector			
Overcurrent Protection	-	>105% Hiccup with auto recovery			
Overvoltage Protection	-	See model selector. Cycle AC input voltage to reset			
Hold Up Time (typ) at 115VAC Input	ms	20	20	20	15
Efficiency	-	See model selector			
No Load Power Draw	W	<0.3	<0.3	<0.5	<0.5
LED Indicator	-	Green LED indicates DC is OK			
Operating Temperature (-25°C start-up)	°C	DRL10, 30, 60: -20° to +71°, derate linearly from 100% to 60% load from 55° to 71° DRL100: -20° to +71°, derate linearly from 100% to 60% load from 51° to 71° DRL100 (<115VAC): -20° to +71°, derate linearly from 100% to 40% load from 40° to 71°			
Storage Temperature	°C	40° to +85°			
Operating Humidity (non condensing)	%RH	5 - 95			
Parallel Operation	-	Not available			
Series Operation	-	Possible			
Cooling	-	Convection			
Operating Altitude	m	3,000			
Withstand Voltage (For 1 minute)	VAC	Input to Output 3kVAC			
Isolation Resistance	MΩ	>100MΩ at 25°C, 70%RH & 500VDC			
Vibration (Operating)	-	IEC 60068-2-6, Sine Wave, 10-500Hz, 19.6m/s ² (2G peak) 10 min per cycle, 60 min for all X,Y,Z directions			
Shock	-	IEC 60068-2-27, Half Sine Wave, 39.2m/s ² (4G) for a duration of 22ms 3 shocks for each 3 directions, 9 times in total			
Safety Agency Certifications	-	UL508 Listed, UL60950-1, UL1310 Class 2 (LPS), NEC Class 2 (except DRL60-12 & DRL100-24), CSA22.2 No.60950-1, EN60950-1, CE Mark			
Conducted & Radiated EMI	-	EN55022-B Conducted, EN55022-A Radiated			
Immunity	-	EN61000-4-2 (lvl 3) , -3 (lvl 3) , -4 (lvl 4) , -5 (lvl 3) , -6 (lvl 3) , -8 (lvl 4) , -11 (class 3)			
Line Dip (200-240VAC)	-	SEMI F47 Compliant			
Weight (Typ)	g	65	120	200	280
Size (WxHxD)	mm	18 x 91 x 55.6	36 x 91 x 55.6	54 x 91 x 55.6	72 x 91 x 55.6
Case Material	-	Flame Retardant Polycarbonate (UL94 V-0)			
Warranty	yrs	3			

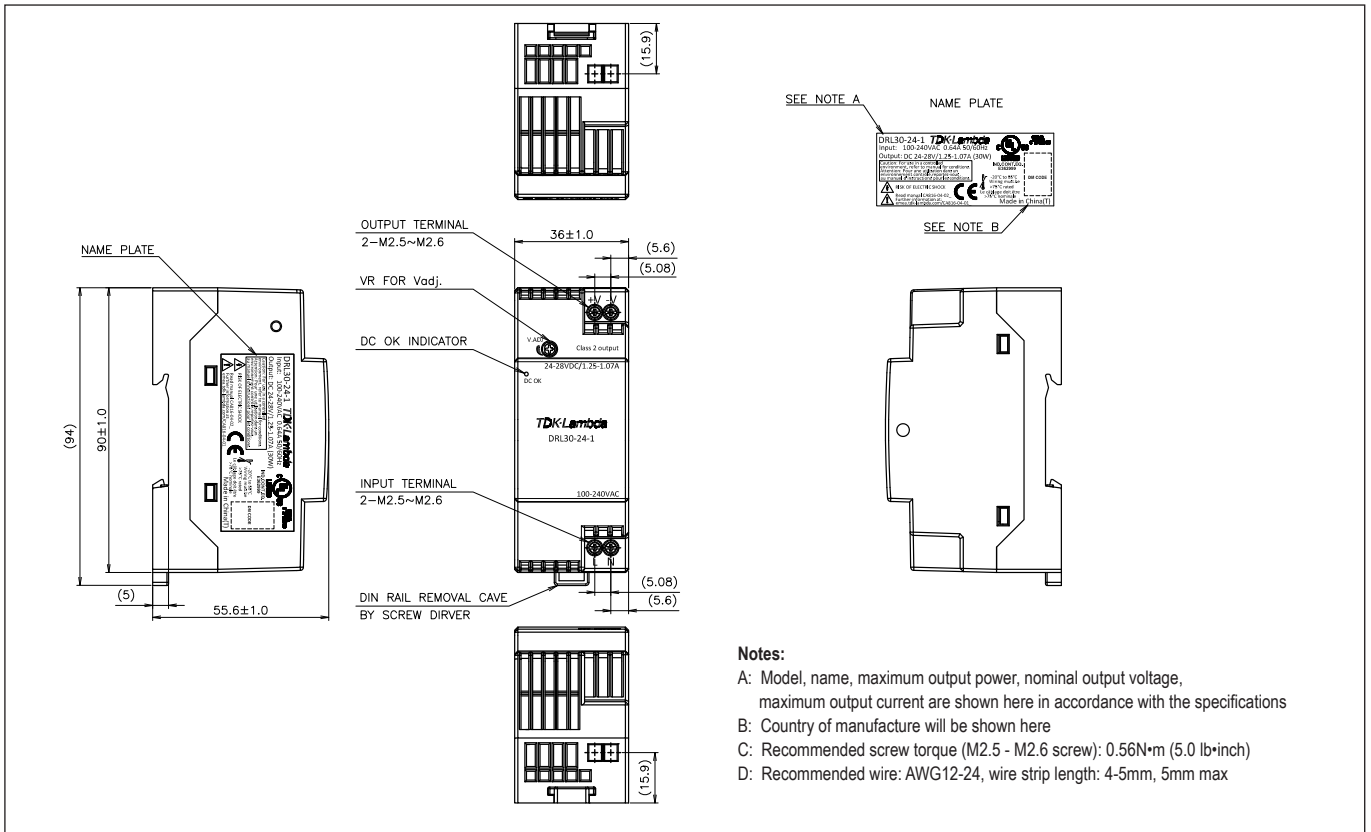
Model Selector

Model	Output Voltage (V)	Adjust Range (V)	Max Current (A)	Max Power (W)	Load Reg (mV)	Line Reg (mV)	Ripple & Noise (mV)	Oversvoltage Protection Trigger Range (V)	Efficiency (%) (115/230VAC)
DRL10-12-1	12	-	0.84	10.08	120	120	120	13.8 - 16.2	85 / 85
DRL30-12-1	12	12 - 15	2.1	25.2	120	120	120	16 - 19	87 / 88
DRL60-12-1	12	12 - 15	4.A	54	120	120	120	16 - 19	87 / 87
DRL10-24-1	24	-	0.42	10	240	240	240	29 - 35	87 / 87
DRL30-24-1	24	24 - 28	1.25	30	240	240	240	29 - 35	88 / 90
DRL60-24-1	24	24 - 28	2.5	60	240	240	240	29 - 35	89 / 90
DRL100-24-1	24	24 - 28	4.2	100.8	240	240	240	29 - 35	88 / 90

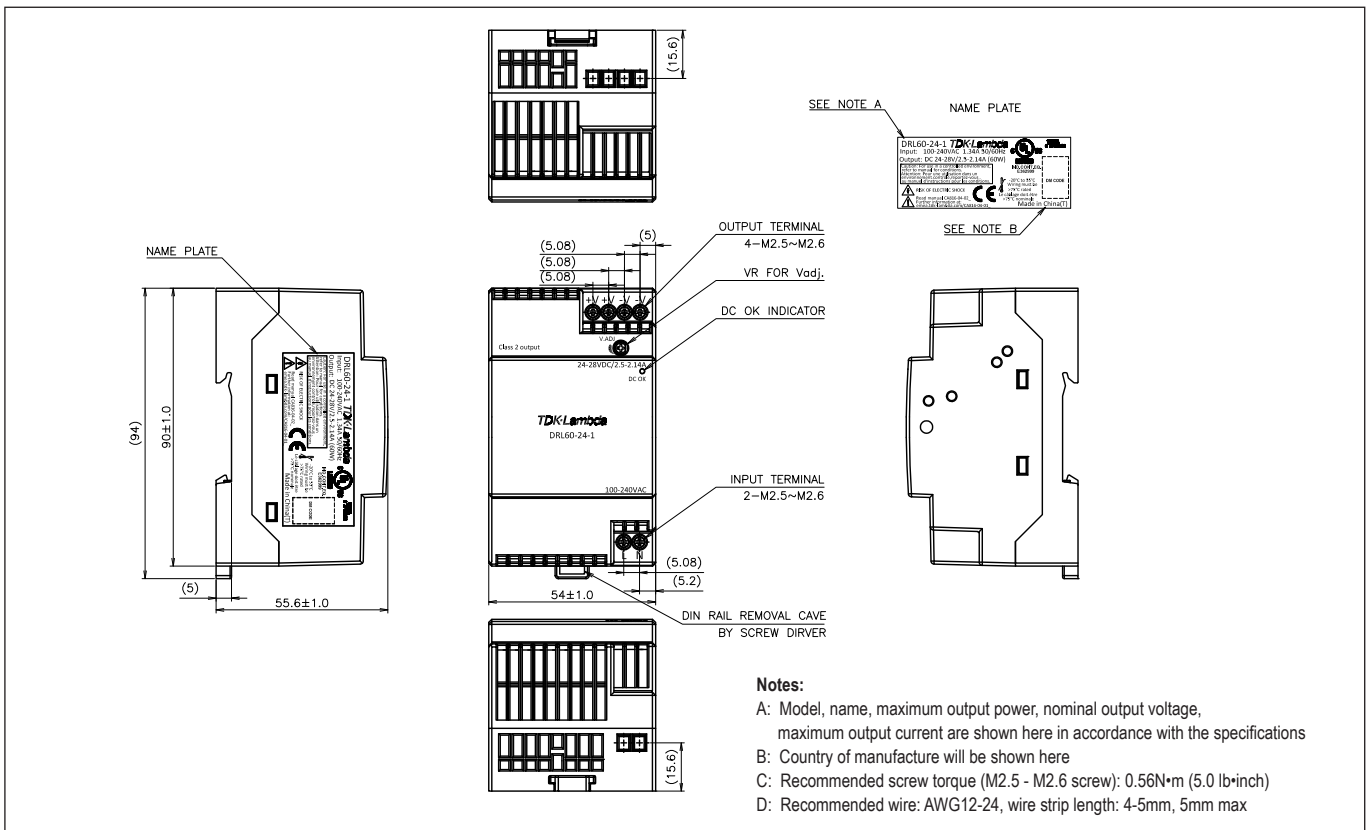
Outline Drawing DRL10-1



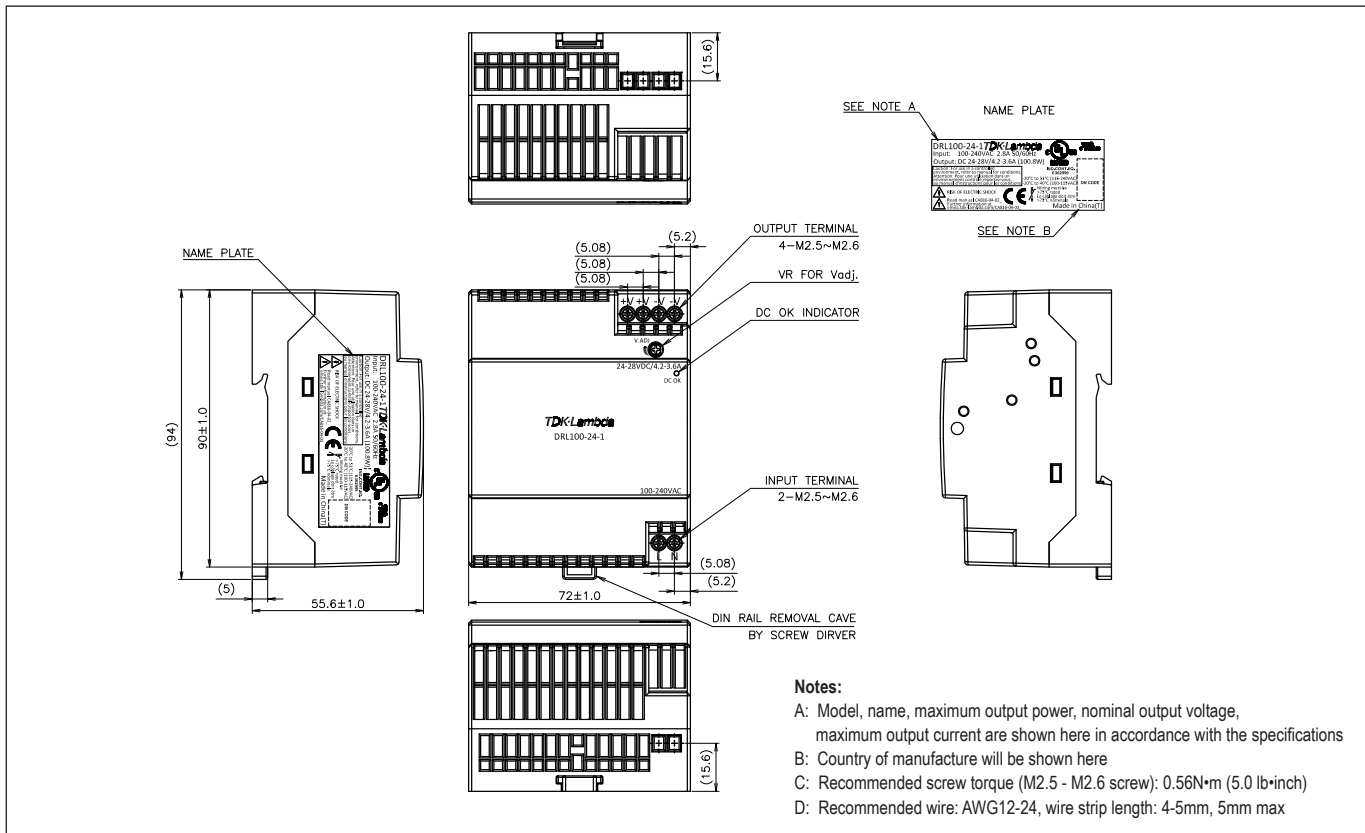
Outline Drawing DRL30-1



Outline Drawing DRL60-1



Outline Drawing DRL100-1





TDK-Lambda France SAS

3 Avenue du Canada
Parc Technopolis
Bâtiment Sigma
91940 les Ulis
France
Tel: +33 1 60 12 71 65
Fax: +33 1 60 12 71 66
france@fr.tdk-lambda.com
www.fr.tdk-lambda.com



Italy Sales Office

Via dei Lavoratori 128/130
20092 Cinisello Balsamo (MI)
Italy
Tel: +39 02 61 29 38 63
Fax: +39 02 61 29 09 00
info.italia@it.tdk-lambda.com
www.it.tdk-lambda.com



Netherlands

info@nl.tdk-lambda.com
www.nl.tdk-lambda.com



TDK-Lambda Germany GmbH

Karl-Bold-Strasse 40
77855 Achern
Germany
Tel: +49 7841 666 0
Fax: +49 7841 5000
info.germany@de.tdk-lambda.com
www.de.tdk-lambda.com



Austria Sales Office

Aredstrasse 22
2544 Leobersdorf
Austria
Tel: +43 2256 655 84
Fax: +43 2256 645 12
info@at.tdk-lambda.com
www.de.tdk-lambda.com



Switzerland Sales Office

Bahnhofstrasse 50
8305 Dietlikon
Switzerland
Tel: +41 44 850 53 53
Fax: +41 44 850 53 50
info@ch.tdk-lambda.com
www.de.tdk-lambda.com



Nordic Sales Office

Haderslevvej 36B
DK-6000 Kolding
Denmark
Tel: +45 2911 9556
info@dk.tdk-lambda.com



TDK-Lambda UK Ltd.

Kingsley Avenue
Ilfracombe
Devon EX34 8ES
United Kingdom
Tel: +44 (0) 12 71 85 66 66
Fax: +44 (0) 12 71 86 48 94
powersolutions@uk.tdk-lambda.com
www.uk.tdk-lambda.com



TDK-Lambda Ltd.

Kibbutz
Givat Hashlosha 48800
Israel
Tel: +9 723 902 4333
Fax: +9 723 902 4777
info@tdk-lambda.co.il
www.tdk-lambda.co.il



C.I.S.

Commercial Support:
Tel: +7 (495) 665 2627
Technical Support:
Tel: +7 (812) 658 0463
info@tdk-lambda.ru
www.tdk-lambda.ru

Local Distribution

