

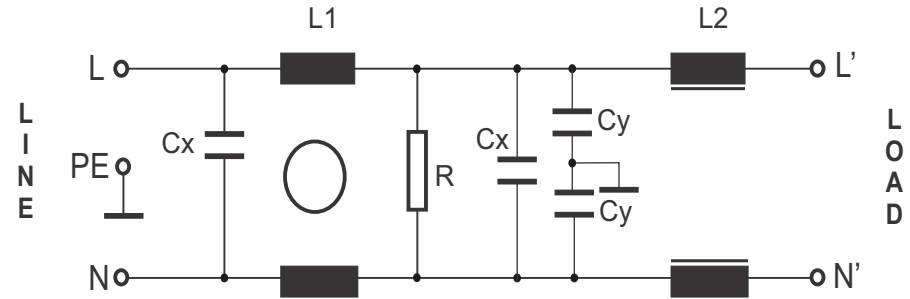
RES80F06

Rev. 0

CIRCUIT DIAGRAM:

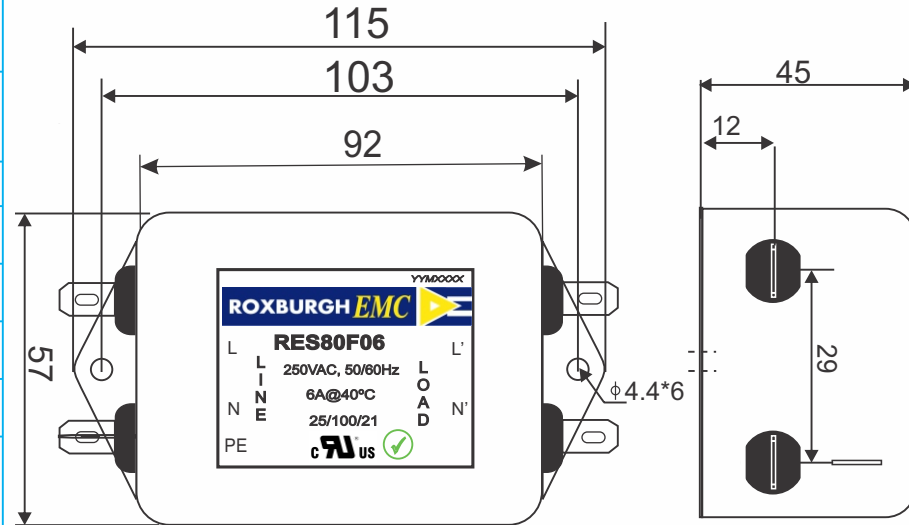
CHARACTERISTICS:

| | |
|------------------------------|---------------------------|
| Rated Voltage: | 250VAC max |
| Rated Current at Ambient: | 6A @ 40°C |
| Operating Frequency: | DC-400HZ |
| Climatic Class (IEC60068-1): | 25/100/21 |
| Temperature Range: | -25°C to +100°C |
| Over load Current: | 1.5 x Rated Ct. for 1 Min |



| | |
|--|----------------|
| Operational Leakage current : (at 230VAC/50Hz and Total C +/-20%) | 0.734 mA max |
| Worst case Leakage current : (N interrupted and Total C +/-20%) | <1.101 mA max |
| DCR @ 25°C (+/-25%) : | 200 mΩ |
| Test Voltage (100%) for 2 sec:- | L-N: 1100VDC |
| | L-GND: 3000VDC |
| Ingress Protection: | IP 20 |
| Weight (Approximate): | 450 gr |

MECHANICAL DIMENSION (mm):



FILTER PARAMETERS:

| | |
|--------------------------------------|------------------|
| Total Inductance (L-L'+N-N') @10KHz: | 7.91mH +50%,-30% |
| Total Capacitance (L-L/L-N) @1KHz: | 2μF +/- 20% |
| Total Capacitance (L-L/L-N) @1KHz: | 9.4nF +/- 20% |
| Total Resistance (L-L/L-N): | 0.22MΩ +/- 10% |
| Total Resistance (L/N-GND): | |

APPROVALS:

REACH
RoHS
UL



APPROVED
BY
AJAY
Date: 09-04-2014

Note:

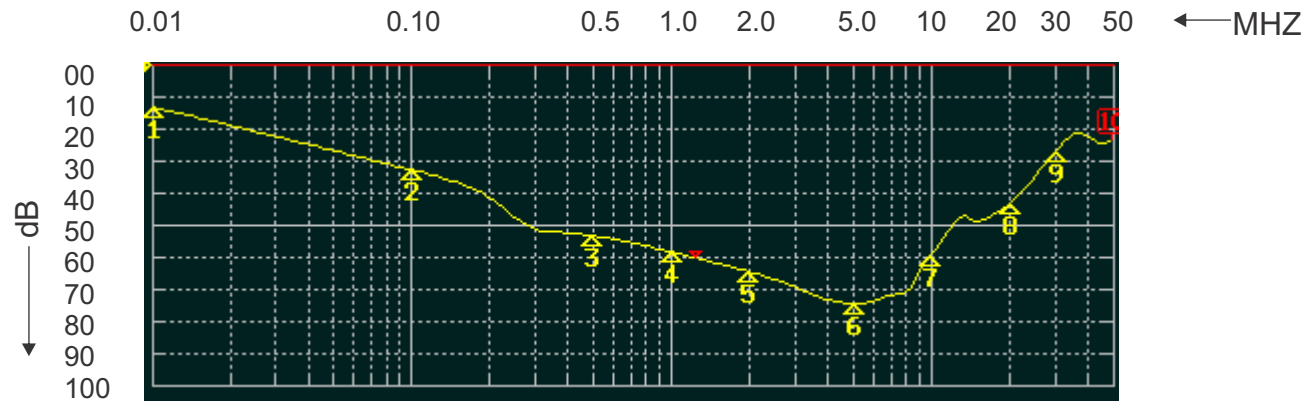
Housing matl. Fe with Ni Plated
Fast-On Terminal (6.3 x 0.8mm)
Connections

TOLERANCE: +/-1.0 mm

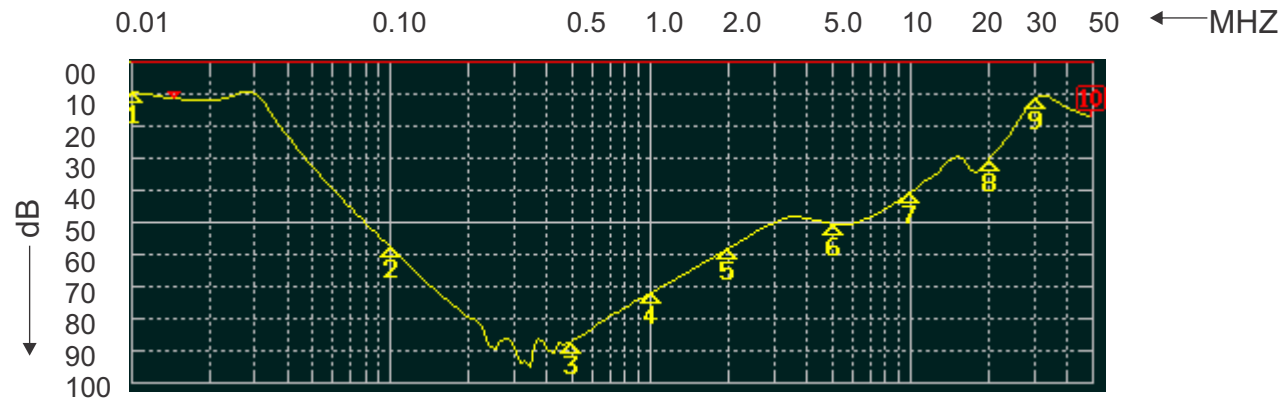


ROXBURGH EMC
FILTER INSERTION LOSS CHARACTERISTICS
CISPR 17 - 50 OHM METHOD

RES80F06



COMMON MODE



DIFFERENTIAL MODE

