

## Sample set - SAMPLE SPT-SMD 1,5/ 8-V-3,5 - 1843443

Please be informed that the data shown in this PDF Document is generated from our Online Catalog. Please find the complete data in the user's documentation. Our General Terms of Use for Downloads are valid (<http://phoenixcontact.com/download>)



PCB terminal block, Nominal current: 13.5 A, Nom. voltage: 160 V, Pitch: 3.5 mm, Number of positions: 8, Connection method: Push-in spring connection, Mounting: SMD soldering, Conductor/PCB connection direction: 90 °, Color: black

The illustration shows the 10-position version

### Why buy this product

- Time saving push-in connection, tools not required
- Defined contact force ensures that contact remains stable over the long term
- Intuitive use through colour coded actuation lever
- Designed for integration into the SMT soldering process
- Operation and conductor connection from one direction enable integration into front of device
- Quick and convenient testing using integrated test option
- Two soldering spots per position reduce the mechanical strain on the soldering spots



### Key Commercial Data

|                                      |               |
|--------------------------------------|---------------|
| Packing unit                         | 5 STK         |
| Minimum order quantity               | 5 STK         |
| GTIN                                 |               |
| GTIN                                 | 4046356951906 |
| Weight per Piece (excluding packing) | 4.670 g       |
| Custom tariff number                 | 85369010      |
| Country of origin                    | Germany       |

### Technical data

#### Dimensions

|             |         |
|-------------|---------|
| Length      | 7.7 mm  |
| Pitch       | 3.5 mm  |
| Dimension a | 24.5 mm |
| Width       | 28.5 mm |

# Sample set - SAMPLE SPT-SMD 1,5/ 8-V-3,5 - 1843443

## Technical data

### Dimensions

|                |           |
|----------------|-----------|
| Height         | 13.6 mm   |
| Pin dimensions | 0,7 x 0,3 |
| Pin spacing    | 7 mm      |
| Hole diameter  | 1.1 mm    |

### General

|                                        |                     |
|----------------------------------------|---------------------|
| Insulating material group              | IIIa                |
| Rated surge voltage (III/3)            | 2.5 kV              |
| Rated surge voltage (III/2)            | 2.5 kV              |
| Rated surge voltage (II/2)             | 2.5 kV              |
| Rated voltage (III/3)                  | 160 V               |
| Rated voltage (III/2)                  | 160 V               |
| Rated voltage (II/2)                   | 320 V               |
| Connection in acc. with standard       | EN-VDE              |
| Nominal current $I_N$                  | 13.5 A              |
| Nominal cross section                  | 1.5 mm <sup>2</sup> |
| Insulating material                    | LCP                 |
| Solder pin surface                     | Sn                  |
| Flammability rating according to UL 94 | V0                  |
| Stripping length                       | 8 mm                |
| Number of positions                    | 8                   |

### Connection data

|                                                                            |                      |
|----------------------------------------------------------------------------|----------------------|
| Conductor cross section solid min.                                         | 0.2 mm <sup>2</sup>  |
| Conductor cross section solid max.                                         | 1.5 mm <sup>2</sup>  |
| Conductor cross section flexible min.                                      | 0.2 mm <sup>2</sup>  |
| Conductor cross section flexible max.                                      | 1.5 mm <sup>2</sup>  |
| Conductor cross section flexible, with ferrule without plastic sleeve min. | 0.2 mm <sup>2</sup>  |
| Conductor cross section flexible, with ferrule without plastic sleeve max. | 1.5 mm <sup>2</sup>  |
| Conductor cross section flexible, with ferrule with plastic sleeve min.    | 0.2 mm <sup>2</sup>  |
| Conductor cross section flexible, with ferrule with plastic sleeve max.    | 0.75 mm <sup>2</sup> |
| Conductor cross section AWG min.                                           | 24                   |
| Conductor cross section AWG max.                                           | 16                   |

### Standards and Regulations

|                                        |        |
|----------------------------------------|--------|
| Connection in acc. with standard       | EN-VDE |
| Flammability rating according to UL 94 | V0     |

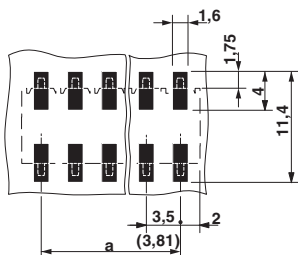
### Environmental Product Compliance

|            |                                                         |
|------------|---------------------------------------------------------|
| China RoHS | Environmentally friendly use period: unlimited = EFUP-e |
|            | No hazardous substances above threshold values          |

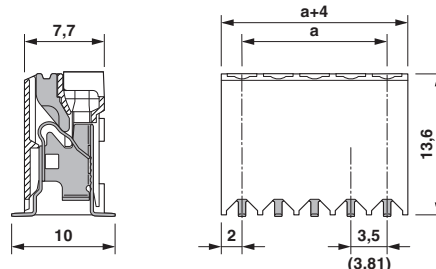
## Drawings

# Sample set - SAMPLE SPT-SMD 1,5/ 8-V-3,5 - 1843443

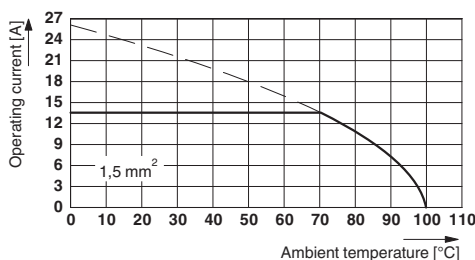
Drilling diagram



Dimensional drawing



Diagram



## Classifications

### eCl@ss

|            |          |
|------------|----------|
| eCl@ss 5.1 | 27141190 |
| eCl@ss 6.0 | 27261101 |
| eCl@ss 8.0 | 27440401 |
| eCl@ss 9.0 | 27440401 |

### ETIM

|          |          |
|----------|----------|
| ETIM 4.0 | EC002643 |
| ETIM 5.0 | EC002643 |
| ETIM 6.0 | EC002643 |

### UNSPSC

|             |          |
|-------------|----------|
| UNSPSC 13.2 | 39121432 |
|-------------|----------|

## Approvals

### Approvals

---

### Approvals

### EAC

---

### Ex Approvals

---

## Sample set - SAMPLE SPT-SMD 1,5/ 8-V-3,5 - 1843443

### Approvals

#### Approval details

|     |                                                                                   |         |
|-----|-----------------------------------------------------------------------------------|---------|
| EAC |  | B.01742 |
|-----|-----------------------------------------------------------------------------------|---------|

### Accessories

#### Accessories

#### Connector

Ferrule - A 0,5 - 8 - 3202481



Ferrule, Length: 8 mm, Color: silver

Ferrule - A 0,75- 8 - 3202504



Ferrule, Length: 8 mm, Color: silver

Ferrule - A 1 - 8 - 3202517



Ferrule, Length: 8 mm, Color: silver

Ferrule - AI 0,25- 8 YE - 3203037



Ferrule, Sleeve length: 8 mm, Length: 12.5 mm, Color: yellow

## Sample set - SAMPLE SPT-SMD 1,5/ 8-V-3,5 - 1843443

### Accessories

Ferrule - AI 0,5 - 8 WH - 3200014



Ferrule, Sleeve length: 8 mm, Length: 14 mm, Color: white

---

Ferrule - AI 0,5 - 8 WH -1000 - 3200881



Ferrule, Sleeve length: 8 mm, Length: 14 mm, Color: white

---

Ferrule - AI 0,75- 8 GY - 3200519



Ferrule, Sleeve length: 8 mm, Length: 14 mm, Color: gray

---

Ferrule - AI 0,75- 8 GY -1000 - 3200894



Ferrule, Sleeve length: 8 mm, Length: 14 mm, Color: gray

---

### Crimping tool

Crimping pliers - CRIMPFOX 6 - 1212034



Crimping pliers, for ferrules without insulating collar according to DIN 46228 Part 1 and ferrules with insulating collar according to DIN 46228 Part 4, 0.25 mm<sup>2</sup> ... 6.0 mm<sup>2</sup>, lateral entry, trapezoidal crimp

---

### Screwdriver tools

## Sample set - SAMPLE SPT-SMD 1,5/ 8-V-3,5 - 1843443

### Accessories

Screwdriver - SZS 0,4X2,5 VDE - 1205037



Screwdriver, slot-headed, VDE insulated, size: 0.4 x 2.5 x 80 mm, 2-component grip, with non-slip grip

---

---

Phoenix Contact 2017 © - all rights reserved  
<http://www.phoenixcontact.com>