

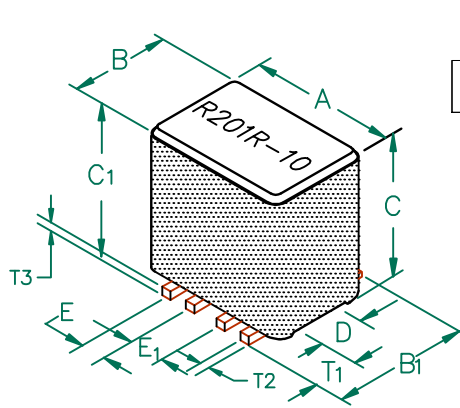
# CM2722R201R-10

**UNCONTROLLED DOCUMENT**



PHYSICAL DIMENSIONS:

A	6.99 [.275]	± 0.10 [.004]
B	5.72 [.225]	± 0.10 [.004]
B <sub>1</sub>	6.73 [.265]	MAX
C	9.53 [.375]	± 0.15 [.006]
C <sub>1</sub>	10.31 [.406]	MAX.
D	2.41 [.095]	± 0.08 [.003]
E	0.89 [.035]	± 0.13 [.005]
E <sub>1</sub>	1.91 [.075]	± 0.13 [.005]
<u>WIRE:</u>		
T <sub>1</sub>	1.91 [.075]	± 0.25 [.010]
T <sub>2</sub>	0.38 [.015]	± TYP.
T <sub>3</sub>	0.38 [.015]	± TYP.



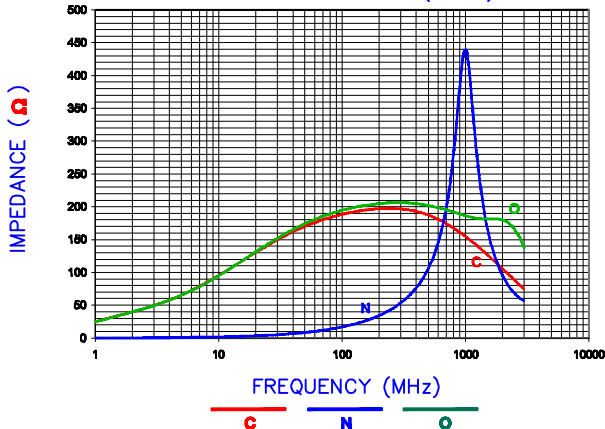
ELECTRICAL CHARACTERISTICS:

Z @ 100MHz (Ω)	DCR (Ω)	Rated Current	Rated Voltage (VDC)
Nominal	200		
Minimum	160		
Maximum	-	0.02	5,000 mA
			30

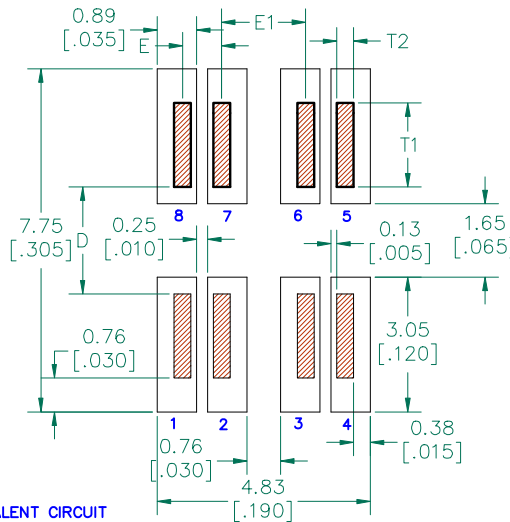
NOTES: UNLESS OTHERWISE SPECIFIED

1. TAPED AND REELED per CURRENT EIA SPECIFICATIONS, 13" REELS 500 PCS per REEL.
2. COMPONENTS SHOULD BE ADEQUATELY PREHEATED BEFORE SOLDERING.
3. REF. CARRIER TAPE SPECIFICATION# CART2722-2P.
4. TERMINATION FINISH IS 100% TIN.
5. THIS PART HAS NO PIN POLARITY.
6. OPERATION TEMPERATURE (INCLUDING SELF-HEATING): -40 ~ +125°C.

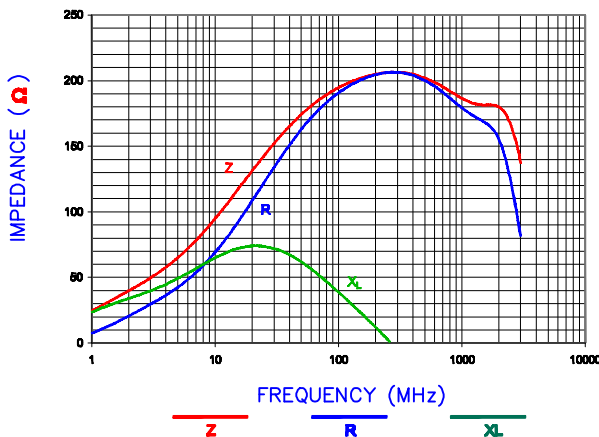
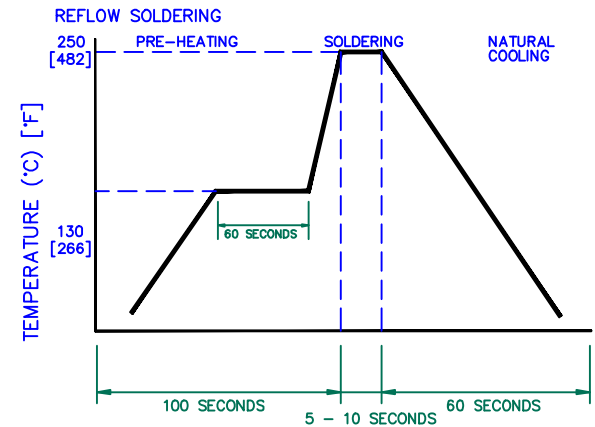
Z vs. FREQUENCY (C,O,N)



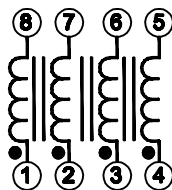
LAND PATTERNS FOR REFLOW SOLDERING



RECOMMENDED SOLDERING CONDITIONS

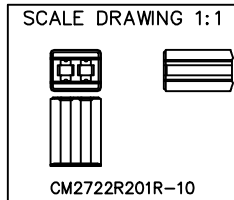
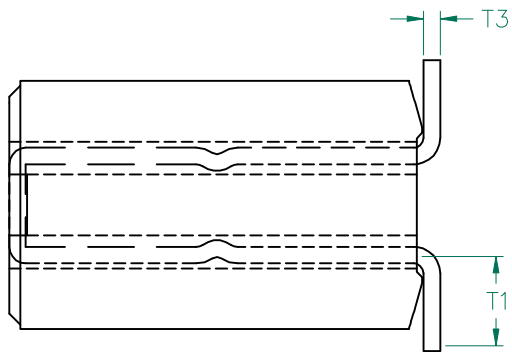
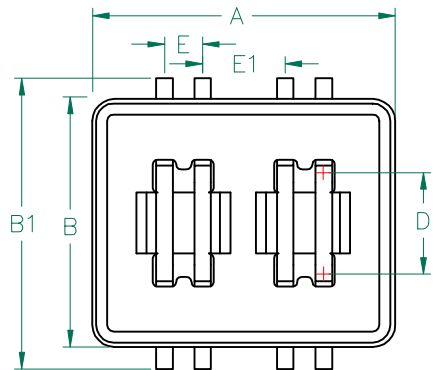


EQUIVALENT CIRCUIT NO POLARITY



DIMENSIONS ARE IN mm (INCHES).				This print is the property of Laird Tech. and is loaned in confidence subject to return upon request and with the understanding that no copies shall be made without the written consent of Laird Tech. All rights to design or invention are reserved.			
D	ADD RATED VOLTAGE AND NOTE 6	08/30/12	QU	PROJECT/PART NUMBER:	CM2722R201R-10		
C	UPDATE COMPANY LOGO ADD EQUIVALENT CIRCUIT	01/30/09	JRK	REV	D	PART TYPE: ASSEMBLY	DRAWN BY: JRK
B	UPDATE COMPANY LOGO & ROHS SYMB.	11/14/07	JRK	DATE:	06/01/04		
A	ORIGINAL DRAFT	6/01/04	JRK	SCALE:	NTS		
REV	DESCRIPTION	DATE	INT	CAD #	TOOL #	H0275-2	
						2 of 3	

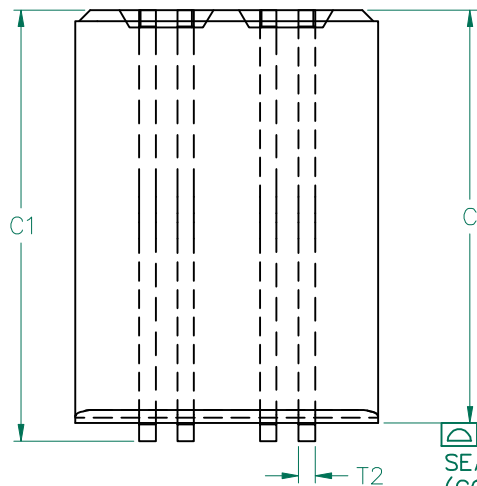




**ELECTRICAL TESTING**

TEST:	GROSS	GROSS
# TURNS	1	1
AWG	22	22
FREQUENCY	25 MHz	100 MHz
NOMINAL	145 Ω	200 Ω
MINIMUM	115 Ω	160 Ω

WEIGHT/1000 1.65 kgs. 3.63 lbs.



0.10 (.004)  
SEATING PLANE  
(CO-PLANARITY)

NOTES: UNLESS OTHERWISE SPECIFIED

1. WIRE: REFERENCE STEWARD WIRE PURCHASE SPEC. W0022-\*1.
2. IMPEDANCE VALUES ARE GROSS, MEASURED USING W0022-\*1 WIRE PLACED AGAINST END OF SLOT w/ NO D.C. BIAS.
3. REFERENCE STEWARD CORE P/N 24H0275-200.
4. NO MORE THAN 0.18 [.007] DIFFERENCE FROM THE LONGEST TO THE SHORTEST CONDUCTOR ON ONE SIDE.
5. TERMINATION FINISH IS 100% TIN.
6. THIS PART HAS NO PIN POLARITY.

**DIMENSIONS:**

A	6.99 [.275]	+	0.10 [.004]
B	5.72 [.225]	+	0.10 [.004]
B <sub>1</sub>	6.73 [.265]		MAX
C	9.53 [.375]	+	0.15 [.006]
C <sub>1</sub>	10.31 [.406]		MAX.
D	2.41 [.095]	+	0.08 [.003]
E	0.89 [.035]	+	0.13 [.005]
E <sub>1</sub>	1.91 [.075]	+	0.13 [.005]

**WIRE DIMENSIONS:**

T <sub>1</sub>	1.91 [.075]	+	0.25 [.010]
T <sub>2</sub>	0.38 [.015]		TYP.
T <sub>3</sub>	0.38 [.015]		TYP.

**UNCONTROLLED DOCUMENT**

DIMENSIONS ARE IN mm (INCHES).				This print is the property of Laird Tech. and is loaned in confidence subject to return upon request and with the understanding that no copies shall be made without the written consent of Laird Tech. All rights to design or invention are reserved.			
D	ADD RATED VOLTAGE AND NOTE 6	08/30/12	QIU				
C	UPDATE COMPANY LOGO ADD EQUIVALENT CIRCUIT	01/30/09	JRK				
B	UPDATE COMPANY LOGO & ROHS SYMB.	11/14/07	JRK				
A	ORIGINAL DRAFT	06/01/04	JRK				
REV	DESCRIPTION	DATE	INT				
PROJECT/PART NUMBER: CM2722R201R-10				REV: D	PART TYPE: ASSEMBLY	DRAWN BY: JRK	
DATE: 06/01/04				SCALE: NTS	SHEET: 3 of 3		
CAD # CM2722R201R-10-D-2				TOOL # 275-200			