



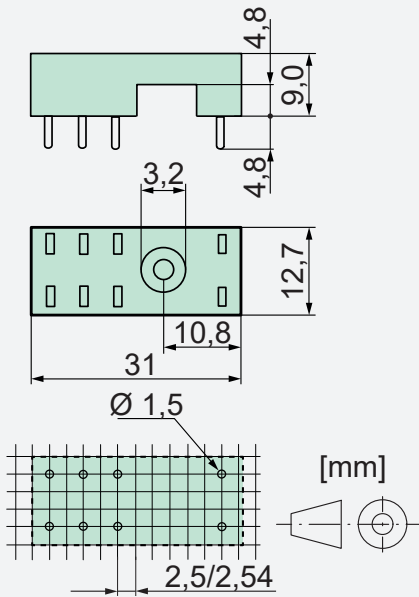
PCB socket SRP-SGR2

Socket data

- With plastic hold down clip
- Soldering tags for PCB



Dimensions



Technical data

Rated current	2x8A
Rated voltage	300VAC
Test voltage coil/contacts	4000Veff
Insulation class (IEC 60664-1)	250VAC
Creepage resistance	CTI 250
Weight	approx. 4g
Ambient temperature	-40°C to +70°C
Packing unit	100 pcs
Approvals	UL, cUL
UL File	E113714

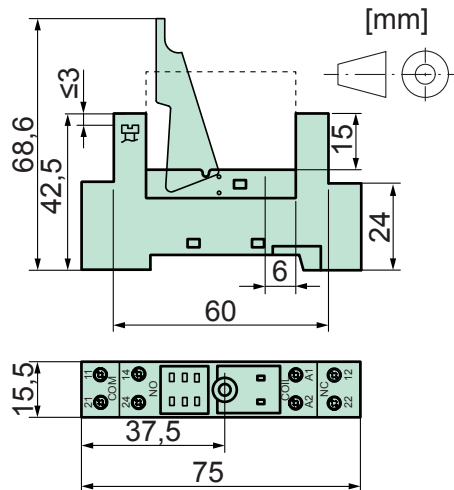
DIN rail socket SRD-SGR2

Socket data

- With plastic grip and marking tag (1 pc)
- Screw terminals
- Assembly on DIN rail 35mm or single-hole mounting with M3 screw



Dimensions



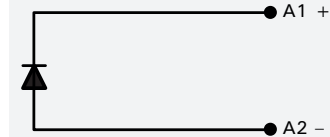
Technical data

Rated current	2x8A
Rated voltage	300VAC
Test voltage coil/contacts	4000Veff
Insulation class (IEC 60664-1)	250VAC
Creepage resistance	CTI 250
Weight	approx. 40g
Ambient temperature	-25°C to +70°C
Cross sections for connection with wires	2x2,5mm ²
end sleeves for strands	2x1,5mm ²
Maximum torque	0,8Nm
Packing unit	20 pcs
Approvals	UL, cUL
UL File	E113714

Modules for SRD-SGR2

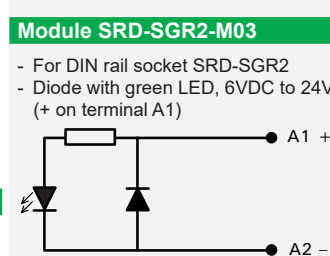
Module SRD-SGR2-M01

- For DIN rail socket SRD-SGR2
- Diode 6VDC to 230VDC (+ on terminal A1)



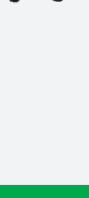
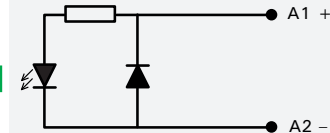
Module SRD-SGR2-M02

- For DIN rail socket SRD-SGR2
- Diode with red LED, 6VDC to 24VDC (+ on terminal A1)



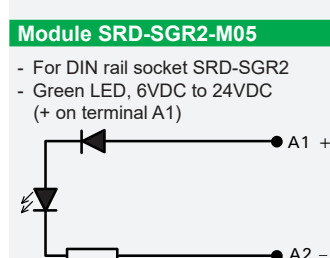
Module SRD-SGR2-M03

- For DIN rail socket SRD-SGR2
- Diode with green LED, 6VDC to 24VDC (+ on terminal A1)



Module SRD-SGR2-M04

- For DIN rail socket SRD-SGR2
- Red LED, 6VDC to 24VDC (+ on terminal A1)



Module SRD-SGR2-M05

- For DIN rail socket SRD-SGR2
- Green LED, 6VDC to 24VDC (+ on terminal A1)

